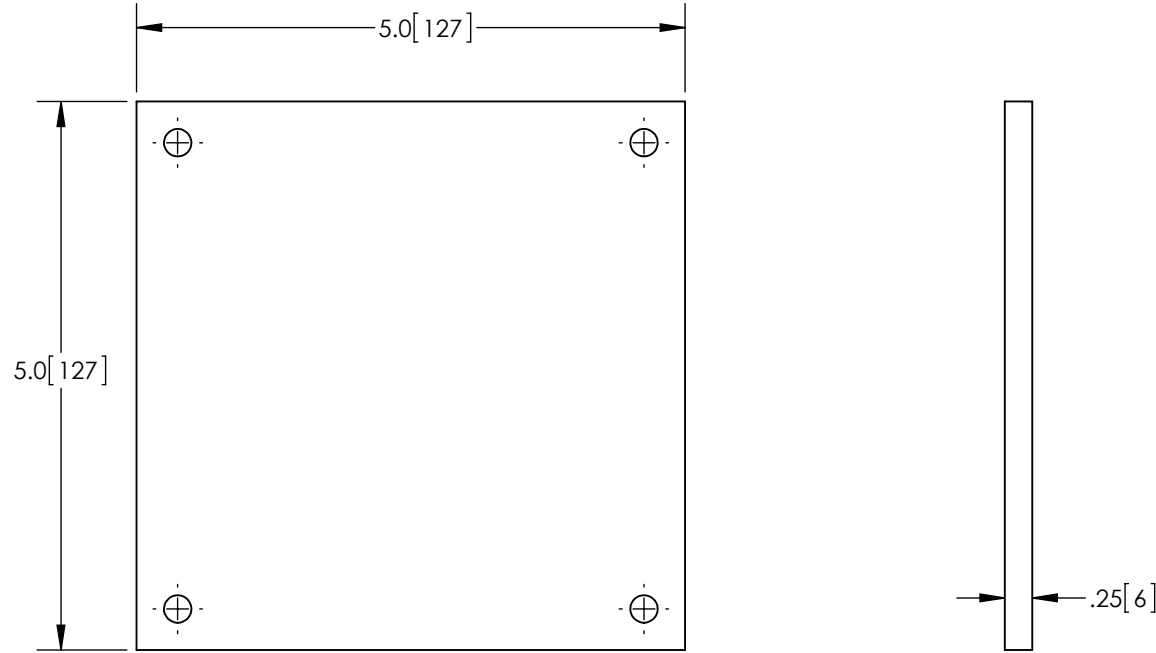


THE INFORMATION CONTAINED IN THIS DRAWING IS THE SOLE PROPERTY OF L-COM, INC. ANY REPRODUCTION IN PART OR WHOLE WITHOUT THE WRITTEN PERMISSION OF L-COM, INC. IS PROHIBITED.

REVISIONS			
REV	DESCRIPTION	DATE	APPROVED
A	INITIAL RELEASE	2/6/13	D.GRIFFIN



NOTES:

- 1- PACKAGE IN ACCORDANCE WITH L-COM SPECIFICATION PS-0014
- ALL DIMENSIONS FOR REFERENCE ONLY -

RoHS Compliant ✓

UNLESS OTHERWISE SPECIFIED, DIMENSIONS ARE IN INCHES [mm] DIMENSIONAL TOLERANCES: .X = ±.1 .XX = ±.01 .XXX = ±.005 ANGULAR TOLERANCES: ALL = ± 1°	APPROVALS	DATE		45 BEECHWOOD DRIVE NORTH ANDOVER, MA 01845	
	DRAWN BY B.PUCHASKI	02/04/13			
	CONFIGURATION DETAILS OF UNDIMENSIONED FEATURES MAY VARY	CHECKED BY P.PESA	02/04/13	CATEGORY ENCLOSURES	
PROJECTION	APPROVED BY P.PESA	02/04/13	PRODUCT DESCRIPTION MOUNTING PLATE BLANK NON-METALIC FOR 6 X 6 NEMA ENCLOSURE		
	COLOR VARIATIONS MAY OCCUR	SIZE A	FSCM NO. 43321	DWG. NO. HGX-NPLATE31	REV. A
		SCALE: NONE	CAD FILE: HGX-NPLATE31.SLDDRW		SHEET 1 OF 1