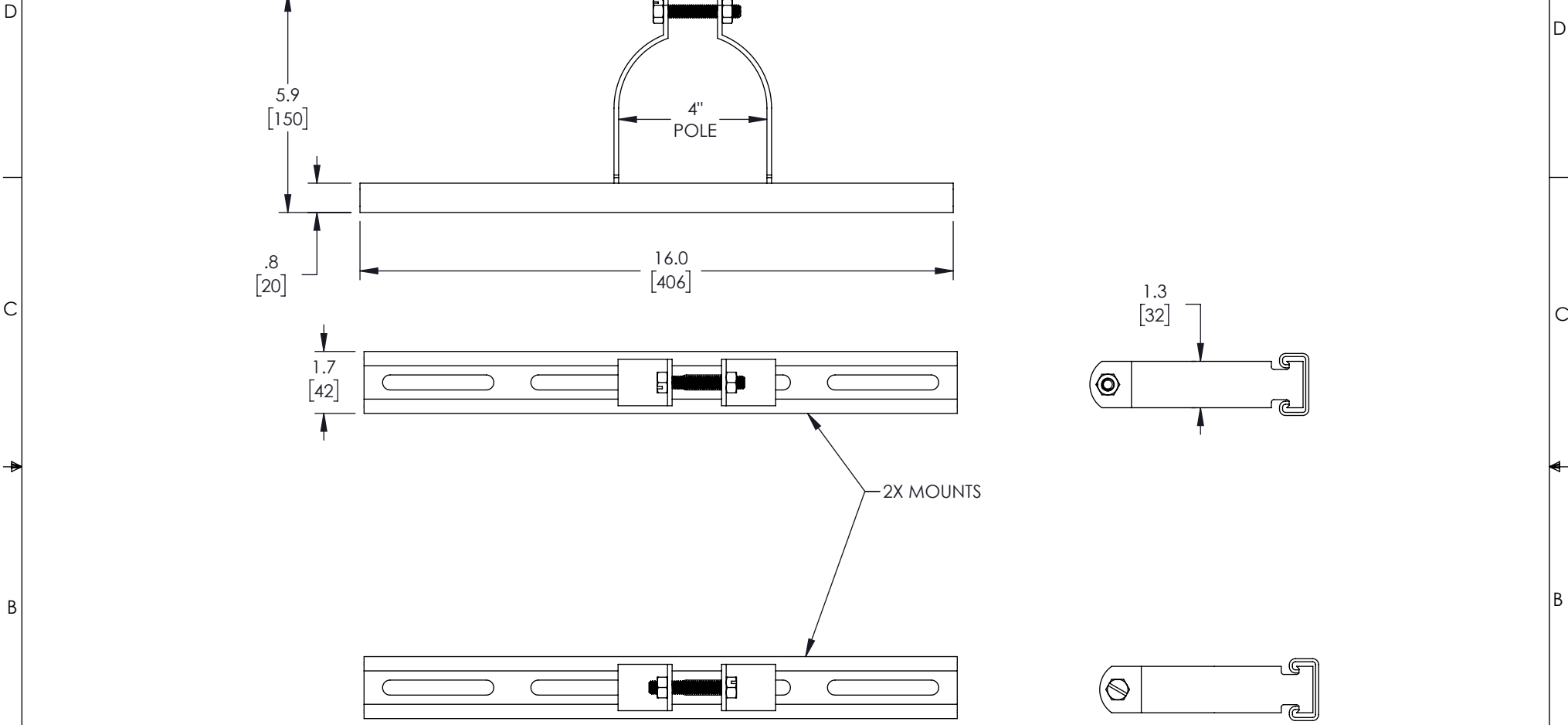


THE INFORMATION CONTAINED IN THIS DRAWING IS THE SOLE PROPERTY OF L-COM, INC. ANY REPRODUCTION IN PART OR WHOLE WITHOUT THE WRITTEN PERMISSION OF L-COM, INC. IS PROHIBITED.

REVISIONS			
REV	DESCRIPTION	DATE	APPROVED
A	INITIAL RELEASE	04/19/2022	MMARTINEZ



NOTES:

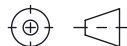
1. ALL HARDWARE INCLUDED

UNLESS OTHERWISE SPECIFIED, DIMENSIONS ARE IN INCHES [mm]

OVERALL CABLE LENGTH TOLERANCE:
 ≤12 [305] = +1 [25] / -0
 >12 [305] ≤60 [1524] = +2 [51] / -0
 >60 [1524] ≤120 [3048] = +4 [102] / -0
 >120 [3048] ≤300 [7620] = +6 [152] / -0
 >300 [7620] = +5% / -0

ALL OTHER DIMENSIONAL TOLERANCES:
 .X = ± .2 [5] | FRACTIONS ± 1/32
 .XX = ± .02 [.5] | ANGLES ± 1°
 .XXX = ± .005 [.13]

THIRD-ANGLE PROJECTION



APPROVALS	DATE
DRAWN BY BPUCHASKI	04/19/2022
CHECKED BY DFRISIELLO	04/19/2022
APPROVED BY MMARTINEZ	04/19/2022

CONFIGURATION DETAILS OF UNDIMENSIONED FEATURES MAY VARY

COLOR VARIATIONS MAY OCCUR

L-com
an INFINITO brand

50 High Street, West Mill,
North Andover, MA 01845 USA.
Phone: 1.800.341.5266
1.978.682.6936

CATEGORY
ENCLOSURE

PRODUCT DESCRIPTION
**POLEMOUNT FOR PC201608 ENCLOSURE
4 INCH POLE**

SIZE	CAGE CODE	ITEM NO.	REV.
A	43321	HGX-PMT37	A

SCALE: NONE | CAD FILE: HGX-PMT37.SLDDRW | SHEET 1 OF 1