

6

5

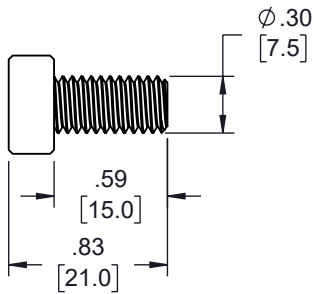
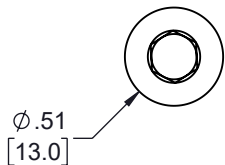
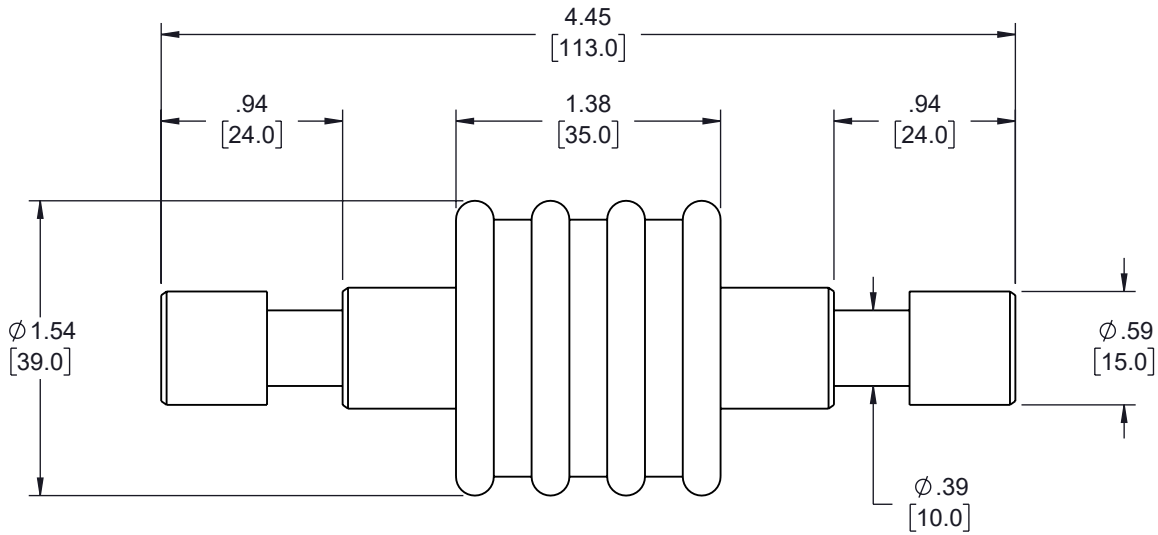
4

3

2

1

REVISION					
ZONE	REV	DESCRIPTION	DATE	CHANGED BY	APPROVED
	A	INITIAL RELEASE	03/02/2023	HBAKKE	DREBECK



UNLESS OTHERWISE SPECIFIED  
LEADING DIMENSIONS ARE INCHES  
DIMENSIONS IN [ ] ARE MILLIMETERS

TOLERANCES:  
.X =  $\pm$ .2 [5]      FRACTIONS  
.XX =  $\pm$ .02 [.5]       $\pm$  1/32  
.XXX =  $\pm$ .005 [.13]      ANGLES  $\pm$  1°

CABLE LENGTH TOLERANCES:  
 $\leq$ 12 [305] = +1 [25] / -0  
>12 [305]  $\leq$  60 [1524] = +2 [51] / -0  
>60 [1524]  $\leq$  120 [3048] = +4 [102] / -0  
>120 [3048]  $\leq$  300 [7620] = +6 [152] / -0  
>300 [7620] = +5% / -0

ALL DIMENSIONS ARE FOR REFERENCE ONLY  
AND SUBJECT TO CHANGE WITHOUT NOTICE.

**L-com**  
an INFINITE brand  
Website: www.L-com.com  
Phone: 1.800.341.5266 | 1.978.682.6936

INTERPRET ALL DIMENSIONS AND TOLERANCES PER ASME Y14.5

SCALE: NONE      SHEET: 1 OF 1

THE INFORMATION CONTAINED IN THIS DRAWING IS THE SOLE PROPERTY OF INFINITE ELECTRONICS, INC. ANY REPRODUCTION IN PART OR WHOLE WITHOUT THE WRITTEN PERMISSION OF INFINITE ELECTRONICS, INC. IS PROHIBITED. THESE COMMODITIES, TECHNOLOGY OR SOFTWARE WERE EXPORTED FROM THE UNITED STATES IN ACCORDANCE WITH THE EXPORT ADMINISTRATION REGULATIONS. DIVERSION CONTRARY TO U.S. LAW PROHIBITED.

DESCRIPTION			
ISOLATING SPARK GAP, 200KA			
SIZE	CAGE CODE	DRAWN BY	ITEM NO.
A	43321	HBAKKE	ISG-200-LC
REV			A

6

5

4

3

2

1