



Electrical Cabinet SMALL CELL Outdoor Split-phase 120/240 Vac 50A Main 4x 7A Branches UL 67 MOV

Cabinets Technical Data Sheet

LC-2MMX8-4472

Features

- UL67
- Main Breaker
- Configurable DIN-Rail Branch Breakers
- Integral Surge Protection
- Pole or Wall Mount

Applications

- Small Cells
- 5G Sites
- DAS Systems
- Electrical Main Panels
- Electrical Sub-Panels
- Load Expansion

Description

Electrical cabinet (also known as power distribution box) LC-2MMX8-4472 from L-Com is a UL67 power distribution box that accepts a 120/240 Vac Split-phase electrical service and distributes power to individual loads via 4x 7A circuit breakers. This electrical cabinet is equipped with a state-of-the-art MOV surge protector that provides lightning protection for downstream equipment to support long-term system reliability. L-Com electrical cabinets are available in stock with same day shipping.

Electrical Specifications

Description	Minimum	Typical	Maximum	Units
Service Voltage		120/240		Vac
Maximum Continuous Operating Voltage (MCOV)				
L - L			300	Vac
L - N			150	Vac
Service Current Rating			50	A
Main Breaker Rating		50		A
Branch Breaker Rating		4x 7A		A
Breaker Type		DIN-Rail		

Surge Protection Specification

Description	Minimum	Typical	Maximum	Units
Surge Protection Technology		MOV		
Protection Modes		L-L, L-N		
8/20µs Surge Current			50	kA
Nominal Discharge Current Rating (In)		20		kA
VPR 8/20µs				
L - N			600	Vpk
SCCR (Short Circuit Current Rating)		10		kAIC

Click the following link (or enter part number in "SEARCH" on website) to obtain additional part information including price, inventory and certifications: [Electrical Cabinet SMALL CELL Outdoor Split-phase 120/240 Vac 50A Main 4x 7A Branches UL 67 MOV LC-2MMX8-4472](#)



an INFINIT® brand



Electrical Cabinet SMALL CELL Outdoor Split-phase 120/240 Vac 50A Main 4x 7A Branches UL 67 MOV

Cabinets Technical Data Sheet

LC-2MMX8-4472

Mechanical Specifications

Size

Outer Height	16.5in	[419.1 mm]
Outer Width	8 in	[203.2 mm]
Outer Depth	6 in	[152.4mm]
Weight	15 lbs	[6.8 kg]
Enclosure Material and Plating	16 Gauge Steel	

Installation

Mount Type	Pole Mount or Wall Mount	
Service Wiring Terminals	Compression Lug	
	Copper	#14 AWG to #4 AWG
	Aluminum	#12 AWG to #3 AWG
Status Indication Terminals	3-Position Screw Terminal #22 AWG to #16 AWG	

Environmental Specifications

Temperature (Operating Range)	-20 to +55 deg C
Temperature (Storage Range)	-20 to +55 deg C
NEMA Rating	3R
Humidity	90% non-condensing

Compliance Certifications

UL Listed	UL 67, UL 489, UL 50, UL 1449 4th Ed
-----------	--------------------------------------

Our portfolio includes cable assemblies, connectors, adapters and custom products, as well as their wireless product line which includes antennas, RF amplifiers, coaxial lightning and surge protectors, and NEMA rated enclosures.

Click the following link (or enter part number in "SEARCH" on website) to obtain additional part information including price, inventory and certifications: [Electrical Cabinet SMALL CELL Outdoor Split-phase 120/240 Vac 50A Main 4x 7A Branches UL 67 MOV LC-2MMX8-4472](https://www.l-com.com/Electrical%20Cabinet%20SMALL%20CELL%20Outdoor%20Split-phase%20120/240%20Vac%2050A%20Main%204x%207A%20Branches%20UL%2067%20MOV%20LC-2MMX8-4472)

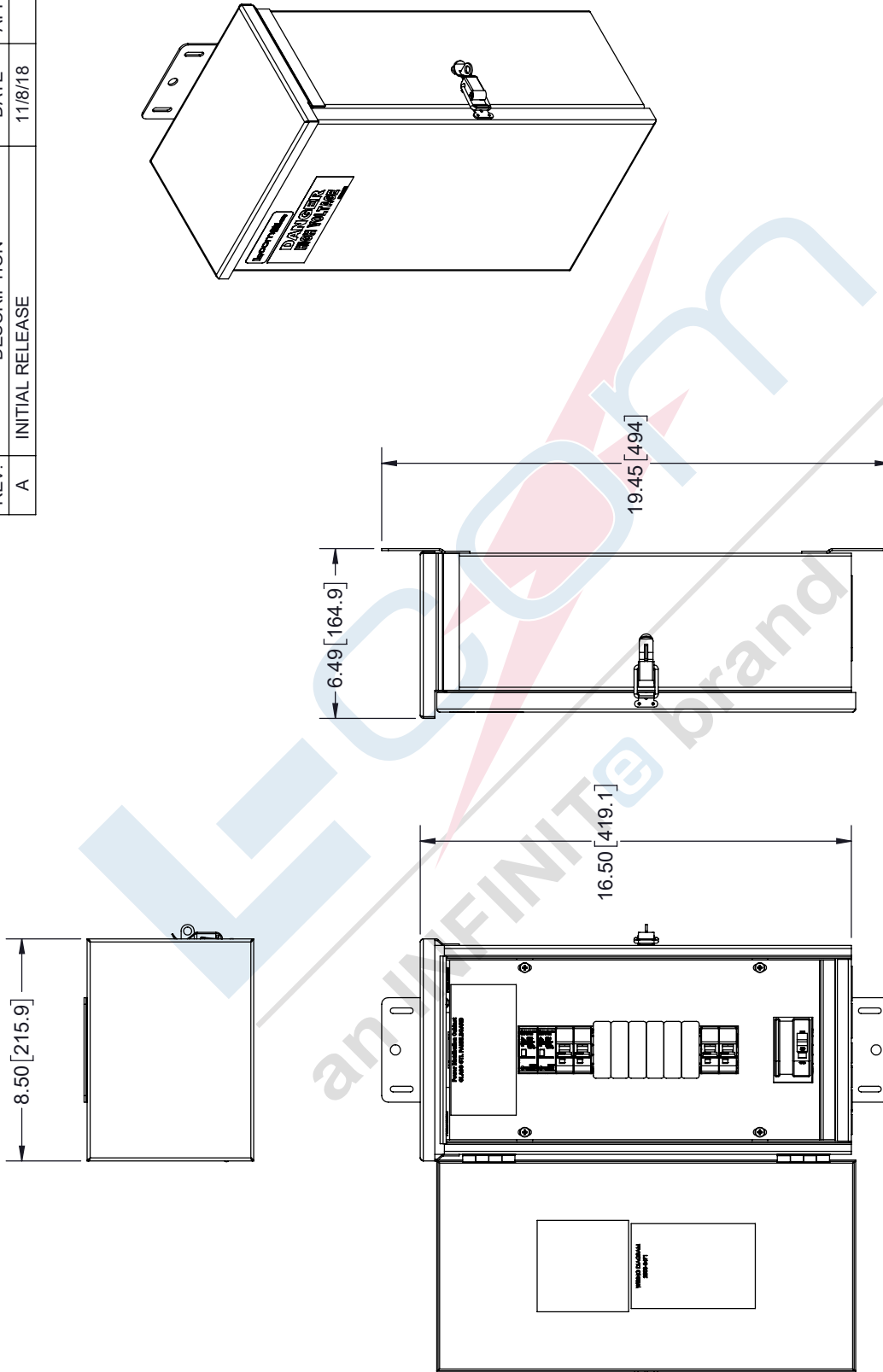
URL: [https://www.l-com.com/Electrical Cabinet SMALL CELL Outdoor Split-phase 120/240 Vac 50A Main 4x 7A Branches UL 67 MOV-p.aspx](https://www.l-com.com/Electrical%20Cabinet%20SMALL%20CELL%20Outdoor%20Split-phase%20120/240%20Vac%2050A%20Main%204x%207A%20Branches%20UL%2067%20MOV-p.aspx)

The information contained in this document is accurate to the best of our knowledge and representative of the part described herein. It may be necessary to make modifications to the part and/or the documentation of the part, in order to implement improvements. L-com reserves the right to make such changes as required. Unless otherwise stated, all specifications are nominal. L-com does not make any representation or warranty regarding the suitability of the part described herein for any particular purpose, and L-com does not assume any liability arising out of the use of any part or documentation.

LC-2MMX8-4472 CAD Drawing

Electrical Cabinet SMALL CELL Outdoor Split-phase
120/240 Vac 50A Main 4x 7A Branches UL 67 MOV

REVISIONS		
REV.	DESCRIPTION	DATE
A	INITIAL RELEASE	11/8/18
		APPROVED



UNLESS OTHERWISE SPECIFIED LENGTH DIMENSIONS ARE IN INCHES DIMENSIONS IN [] ARE IN MILLIMETERS		THE INFORMATION AND DESIGN IN THIS DOCUMENT IS THE PROPERTY OF L-COM GLOBAL CONNECTIVITY. ALL RIGHTS RESERVED.	
TOLERANCES:	FRACTIONS	SHEET	OF
.X±.2 [5.08]	± 1/32	1	1
.XX±.01 [.25]	± 1/64		
.XXX±.005 [.13]	ANGLES ± 1°	SCALE	1:6
ALL DIMENSIONS SHOWN ARE FOR REFERENCE ONLY.			
THIRD-ANGLE PROJECTION			
SIZE	CAGE	DRAWN BY	PART NUMBER
A	43321	DPM	LC-2MMX8-4472
			REV
			A

L-com Global Connectivity

50 HIGH STREET, WEST MILL, 3rd FLOOR
SUITE #30, NORTH ANDOVER, MA 01845 USA.
PHONE: 1.800.341.5266
FAX: 1.978.682.6936
1.978.689.9484

THESE COMMODITIES, TECHNOLOGY OR SOFTWARE WERE EXPORTED FROM THE UNITED STATES IN ACCORDANCE WITH THE EXPORT ADMINISTRATION REGULATIONS. DIVERSION CONTRARY TO U.S. LAW PROHIBITED.