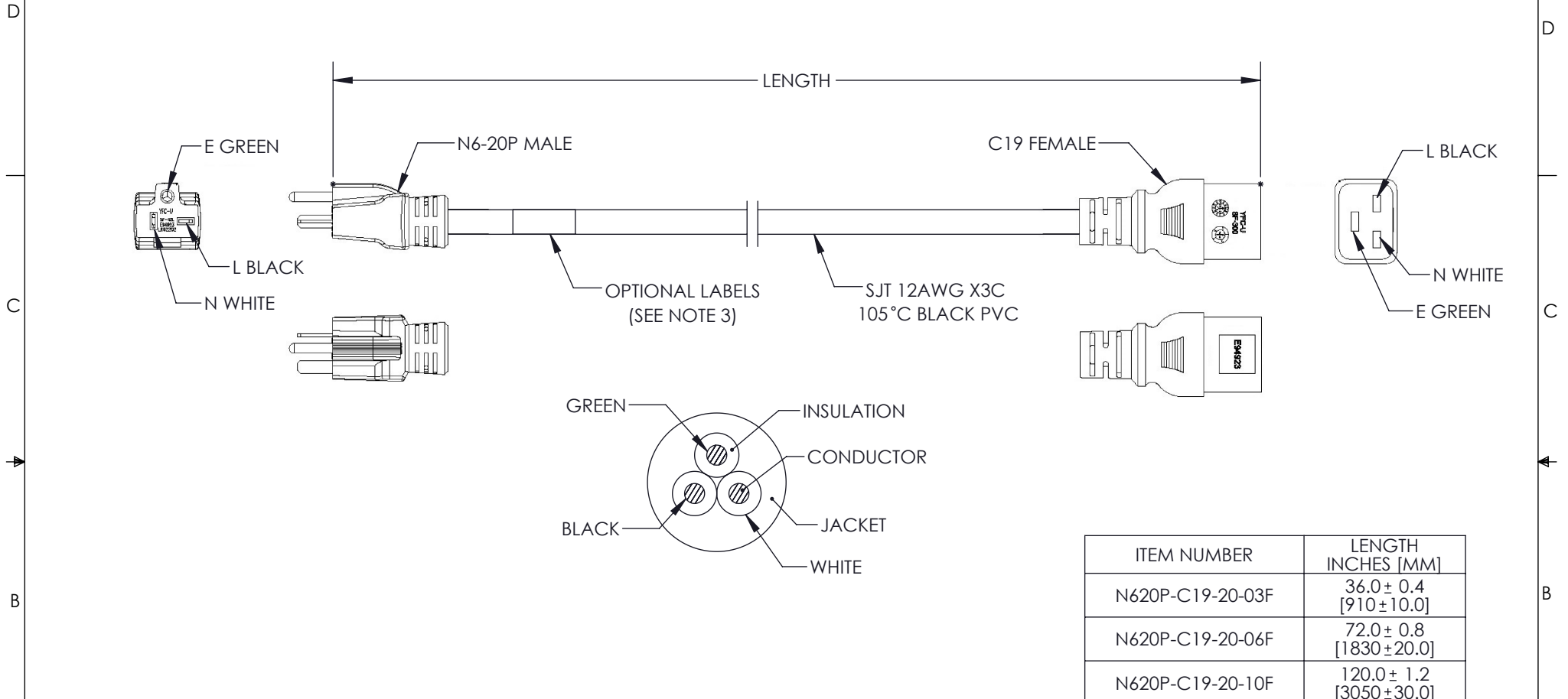



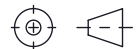
THE INFORMATION CONTAINED IN THIS DRAWING IS THE SOLE PROPERTY OF L-COM, INC. ANY REPRODUCTION IN PART OR WHOLE WITHOUT THE WRITTEN PERMISSION OF L-COM, INC. IS PROHIBITED.

REVISIONS			
REV	DESCRIPTION	DATE	APPROVED
A	INITIAL RELEASE	10/19/2021	GUTTADAURO



**NOTES:**

- VOLTAGE RATING:  
DIELECTRIC VOLTAGE WITHSTAND TEST: 1500V / 1 Sec  
CONDUCTOR RESISTANCE ≤ 5.58Ω/1000M  
VOLTAGE RATING AC 300V
- CABLE MARKING :  
(UL) E135710-F5 SJT 3X12AWG 105°C 300V VW-1  
c(UL) SJT 3X3.31mm2(12AWG) 105°C 300V FT2
- OPTIONAL LABELS:  
OPTIONAL LABEL(S) MAY INCLUDE  
UL, CURRENT AND/OR WARNING
- CABLE ASSEMBLY SHALL BE INDIVIDUALLY PACKAGED IN ACCORDANCE WITH SPEC. PS-0031.
- ALL DIMENSIONS FOR REFERENCE ONLY.

UNLESS OTHERWISE SPECIFIED, DIMENSIONS ARE IN INCHES [mm] OVERALL CABLE LENGTH TOLERANCE: ≤12 [305] = +1 [25] / -0 >12 [305] ≤60 [1524] = +2 [51] / -0 >60 [1524] ≤120 [3048] = +4 [102] / -0 >120 [3048] ≤300 [7620] = +6 [152] / -0 >300 [7620] = +5% / -0 ALL OTHER DIMENSIONAL TOLERANCES: .X = ± .2 [5]   FRACTIONS ± 1/32 .XX = ± .02 [5]   ANGLES ± 1° .XXX = ± .005 [1.3]	APPROVALS	DATE	 50 High Street, West Mill, North Andover, MA 01845 USA. Phone: 1.800.341.5266 1.978.682.6936
	DRAWN BY MVEERAPPAN CHECKED BY DFRISIELLO APPROVED BY GUTTADAURO	10/19/2021 10/19/2021 10/19/2021	
THIRD-ANGLE PROJECTION	CONFIGURATION DETAILS OF UNDIMENSIONED FEATURES MAY VARY	PRODUCT DESCRIPTION	
	COLOR VARIATIONS MAY OCCUR	N6-20P - C19 Power Cord, 20A, 250V,	
	SIZE <b>A</b>	CAGE CODE <b>43321</b>	ITEM NO. <b>N620P-C19-20</b>
	SCALE: NONE	CAD FILE: N620P-C19-20.SLDDRW	SHEET 1 OF 1