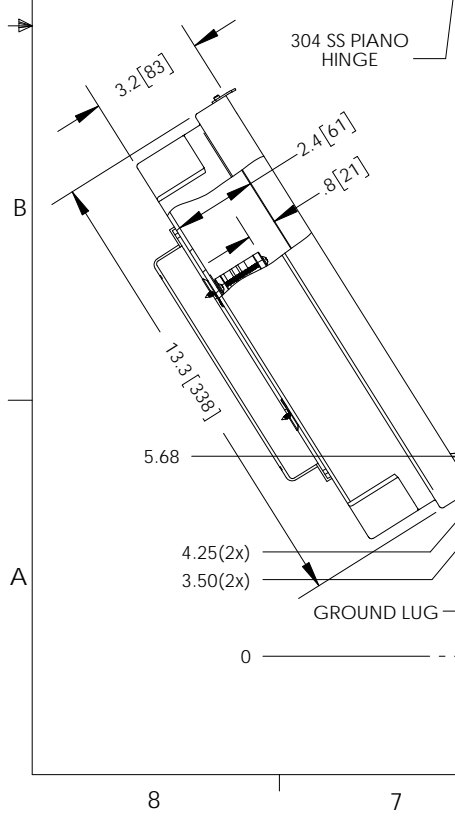
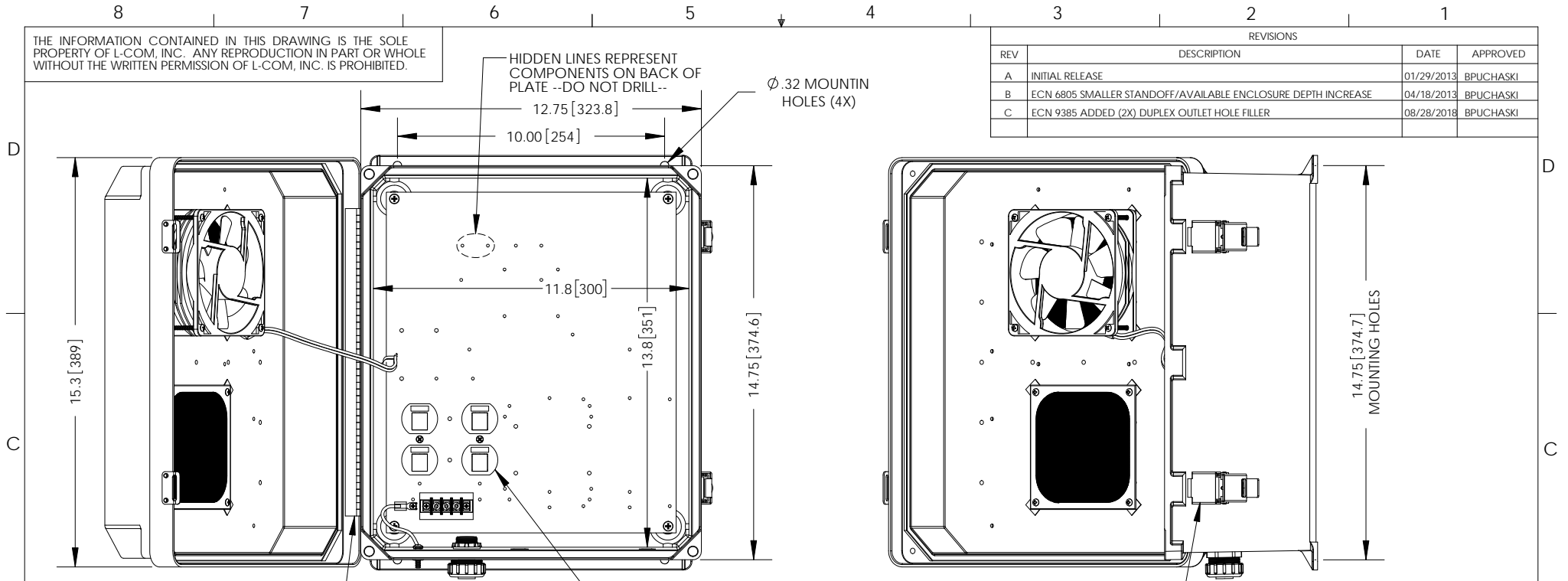


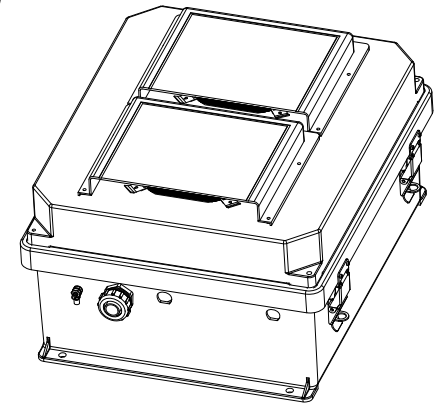
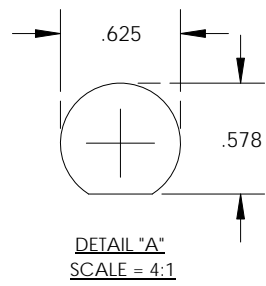
THE INFORMATION CONTAINED IN THIS DRAWING IS THE SOLE PROPERTY OF L-COM, INC. ANY REPRODUCTION IN PART OR WHOLE WITHOUT THE WRITTEN PERMISSION OF L-COM, INC. IS PROHIBITED.

REVISIONS			
REV	DESCRIPTION	DATE	APPROVED
A	INITIAL RELEASE	01/29/2013	BPUCHASKI
B	ECN 6805 SMALLER STANDOFF/AVAILABLE ENCLOSURE DEPTH INCREASE	04/18/2013	BPUCHASKI
C	ECN 9385 ADDED (2X) DUPLEX OUTLET HOLE FILLER	08/28/2018	BPUCHASKI



- NOTE:**
- ENCLOSURE MATERIAL-GRAY (RAL7035)  
HOT MOLDED FIBERGLASS REINFORCED POLYESTER
  - SELF EXTINGUISHING AND HALOGEN FREE.
  - CABINETS ARE MAINTENANCE FREE AND CORROSION RESISTANT.
  - SHALL BE PACKAGED AS PER L-COM SPEC PKG-00070
  - ALL DIMENSIONS FOR REFERENCE ONLY.

**REGULATORY COMPLIANCE:**  
CE2011/65/EU(RoHS DIRECTIVE)



UNLESS OTHERWISE SPECIFIED, DIMENSIONS ARE IN INCHES [mm]  DIMENSIONAL TOLERANCES: .X = ±.1 [2.54] .XX = ±.01 [25] .XXX = ±.005 [13]	APPROVALS DRAWN BY BPUCHASKI	DATE 01/28/2013		50 HIGH STREET NORTH ANDOVER, MA 01845		
	CHECKED BY P.PSEA	01/28/2013			CATEGORY <b>ENCLOSURE</b>	
	ANGULAR TOLERANCES: ALL = ± 1°	APPROVED BY P.PSEA	01/28/2013	PRODUCT DESCRIPTION <b>NEMA ENCLOSURE 14 X 12 X 7 WEATHERPROOF 240VAC W/ FAN</b>		
	PROJECTION 	CONFIGURATION DETAILS OF UNDIMENSIONED FEATURES MAY VARY  COLOR VARIATIONS MAY OCCUR	SCALE: NONE	SIZE <b>A</b>	CAGE CODE <b>43321</b>	DWG. NO. <b>NB141207-20F</b>