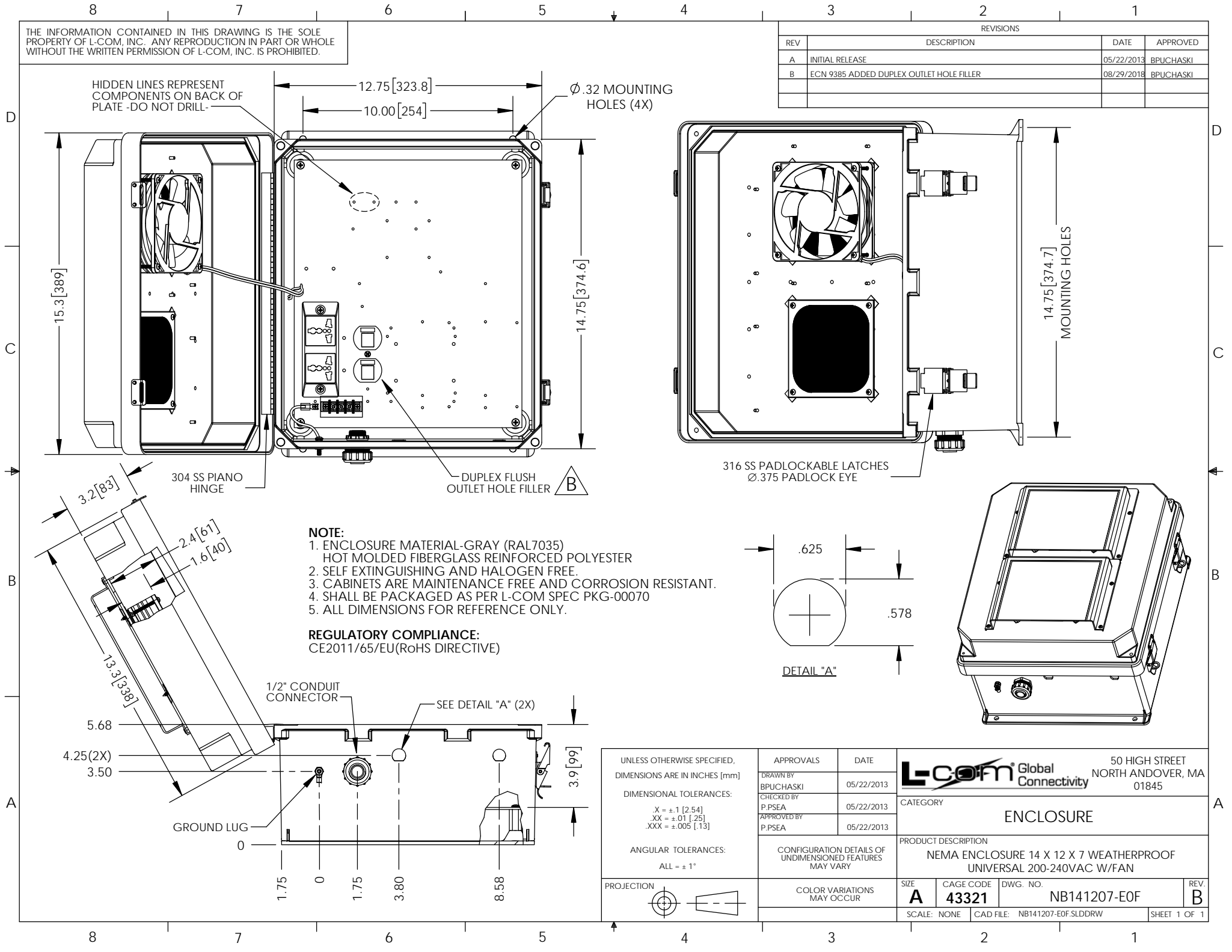


THE INFORMATION CONTAINED IN THIS DRAWING IS THE SOLE PROPERTY OF L-COM, INC. ANY REPRODUCTION IN PART OR WHOLE WITHOUT THE WRITTEN PERMISSION OF L-COM, INC. IS PROHIBITED.

REVISIONS			
REV	DESCRIPTION	DATE	APPROVED
A	INITIAL RELEASE	05/22/2013	BPUCHASKI
B	ECN 9385 ADDED DUPLEX OUTLET HOLE FILLER	08/29/2018	BPUCHASKI



UNLESS OTHERWISE SPECIFIED, DIMENSIONS ARE IN INCHES [mm]	APPROVALS	DATE	 50 HIGH STREET NORTH ANDOVER, MA 01845
	DRAWN BY BPUCHASKI	05/22/2013	
	CHECKED BY P.PSEA	05/22/2013	
	APPROVED BY P.PSEA	05/22/2013	
DIMENSIONAL TOLERANCES: .X = ±.1 [2.54] .XX = ±.01 [.25] .XXX = ±.005 [.13]	CONFIGURATION DETAILS OF UNDIMENSIONED FEATURES MAY VARY		CATEGORY ENCLOSURE
ANGULAR TOLERANCES: ALL = ± 1°	COLOR VARIATIONS MAY OCCUR		PRODUCT DESCRIPTION NEMA ENCLOSURE 14 X 12 X 7 WEATHERPROOF UNIVERSAL 200-240VAC W/FAN
PROJECTION 	SIZE A	CAGE CODE 43321	DWG. NO. NB141207-E0F
	SCALE: NONE	CAD FILE: NB141207-E0F.SLDDRW	REV. B
			SHEET 1 OF 1