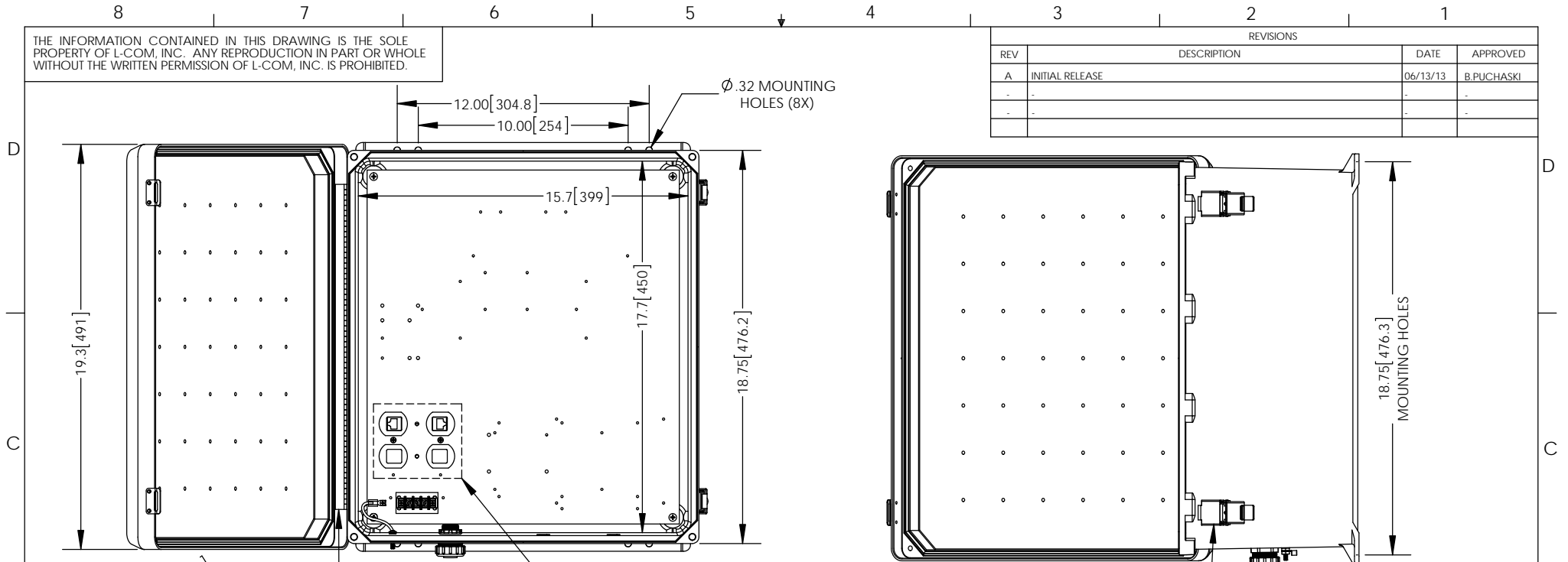


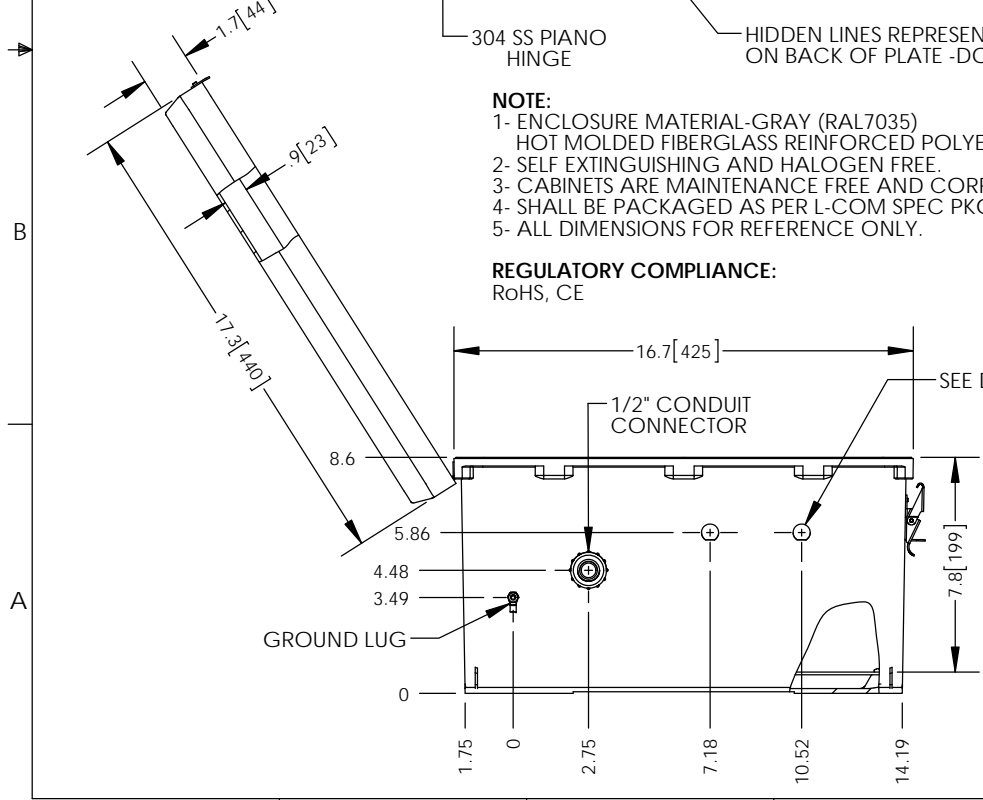
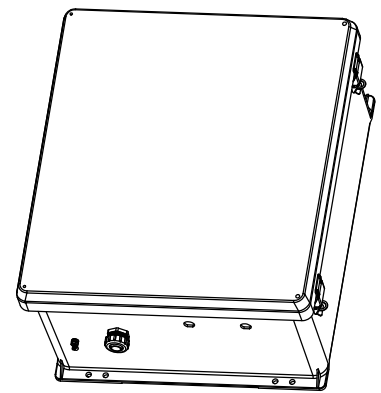
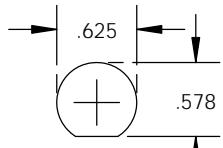
THE INFORMATION CONTAINED IN THIS DRAWING IS THE SOLE PROPERTY OF L-COM, INC. ANY REPRODUCTION IN PART OR WHOLE WITHOUT THE WRITTEN PERMISSION OF L-COM, INC. IS PROHIBITED.

REVISIONS			
REV	DESCRIPTION	DATE	APPROVED
A	INITIAL RELEASE	06/13/13	B.PUCHASKI
-	-	-	-
-	-	-	-



- NOTE:**
- 1- ENCLOSURE MATERIAL-GRAY (RAL7035) HOT MOLDED FIBERGLASS REINFORCED POLYESTER
 - 2- SELF EXTINGUISHING AND HALOGEN FREE.
 - 3- CABINETS ARE MAINTENANCE FREE AND CORROSION RESISTANT.
 - 4- SHALL BE PACKAGED AS PER L-COM SPEC PKG-00070
 - 5- ALL DIMENSIONS FOR REFERENCE ONLY.

REGULATORY COMPLIANCE:
RoHS, CE



UNLESS OTHERWISE SPECIFIED, DIMENSIONS ARE IN INCHES [mm] DIMENSIONAL TOLERANCES: .X = ±.1 .XX = ±.01 .XXX = ±.005 ANGULAR TOLERANCES: ALL = ± 1° PROJECTION	APPROVALS	DATE		45 BEECHWOOD DRIVE NORTH ANDOVER, MA 01845
	DRAWN BY B.PUCHASKI	06/13/13		
	CHECKED BY P.PESA	06/13/13	CATEGORY	ENCLOSURES
	APPROVED BY P.PESA	06/13/13	PRODUCT DESCRIPTION	
COLOR VARIATIONS MAY OCCUR	SIZE A	FSCM NO. 43321	DWG. NO. NB181608-400	REV. A
SCALE: NONE		CAD FILE: NB181608-400.SLDRW		SHEET 1 OF 1