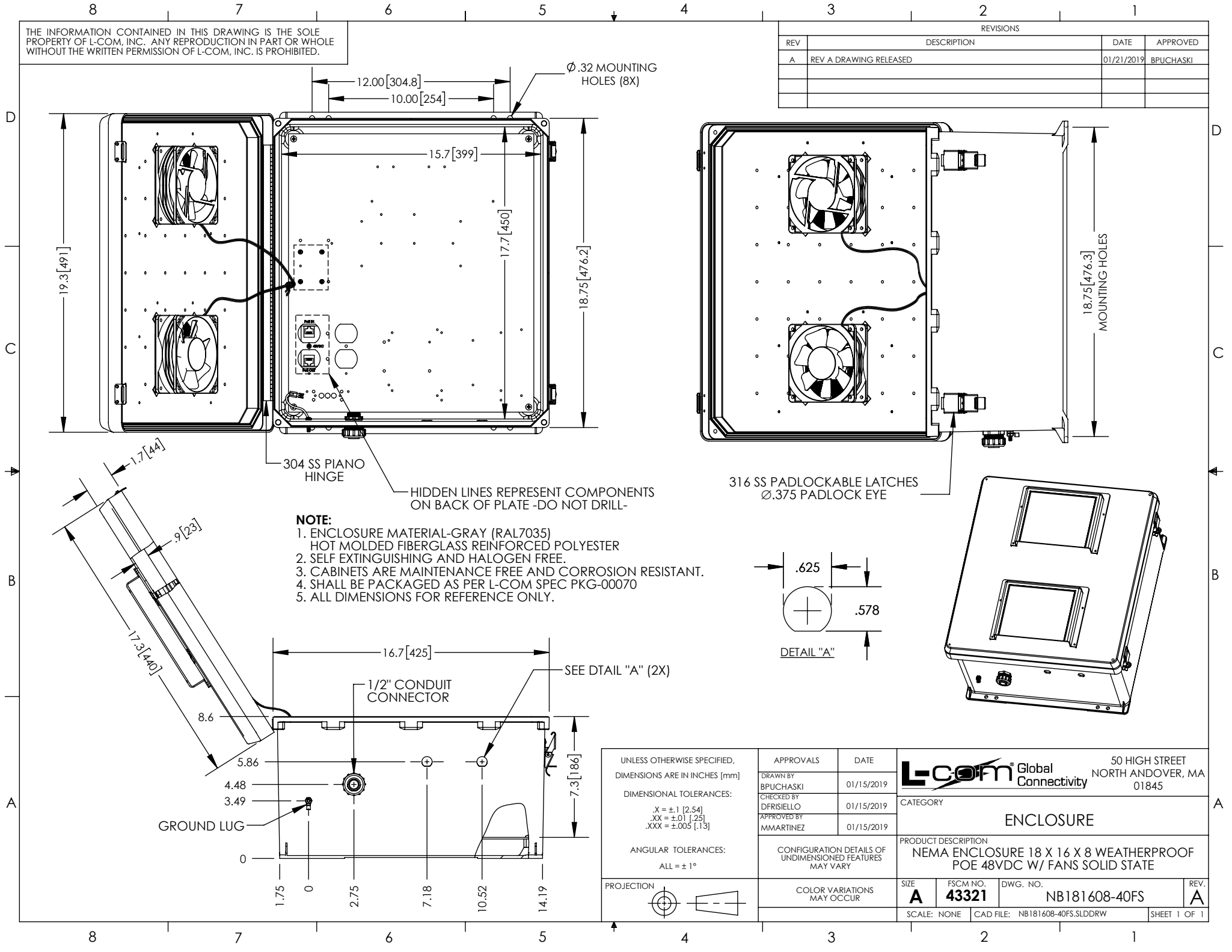


THE INFORMATION CONTAINED IN THIS DRAWING IS THE SOLE PROPERTY OF L-COM, INC. ANY REPRODUCTION IN PART OR WHOLE WITHOUT THE WRITTEN PERMISSION OF L-COM, INC. IS PROHIBITED.

REVISIONS			
REV	DESCRIPTION	DATE	APPROVED
A	REV A DRAWING RELEASED	01/21/2019	BPUCHASKI



- NOTE:**
- ENCLOSURE MATERIAL-GRAY (RAL7035) HOT MOLDED FIBERGLASS REINFORCED POLYESTER
  - SELF EXTINGUISHING AND HALOGEN FREE.
  - CABINETS ARE MAINTENANCE FREE AND CORROSION RESISTANT.
  - SHALL BE PACKAGED AS PER L-COM SPEC PKG-00070
  - ALL DIMENSIONS FOR REFERENCE ONLY.

UNLESS OTHERWISE SPECIFIED, DIMENSIONS ARE IN INCHES [mm] DIMENSIONAL TOLERANCES: .X = ±.1 [2.54] .XX = ±.01 [2.5] .XXX = ±.005 [1.3]	APPROVALS DRAWN BY BPUCHASKI CHECKED BY DFRISIELLO APPROVED BY MMARTINEZ	DATE 01/15/2019 01/15/2019 01/15/2019	<b>L-com</b> Global Connectivity 50 HIGH STREET NORTH ANDOVER, MA 01845	
	CONFIGURATION DETAILS OF UNDIMENSIONED FEATURES MAY VARY			CATEGORY <b>ENCLOSURE</b>
	ANGULAR TOLERANCES: ALL = ± 1°	COLOR VARIATIONS MAY OCCUR	PRODUCT DESCRIPTION <b>NEMA ENCLOSURE 18 X 16 X 8 WEATHERPROOF POE 48VDC W/ FANS SOLID STATE</b>	SIZE <b>A</b> FSCM NO. <b>43321</b> DWG. NO. <b>NB181608-40FS</b>
	PROJECTION 	SCALE: NONE CAD FILE: NB181608-40FS.SLDRW	SHEET 1 OF 1	REV. <b>A</b>