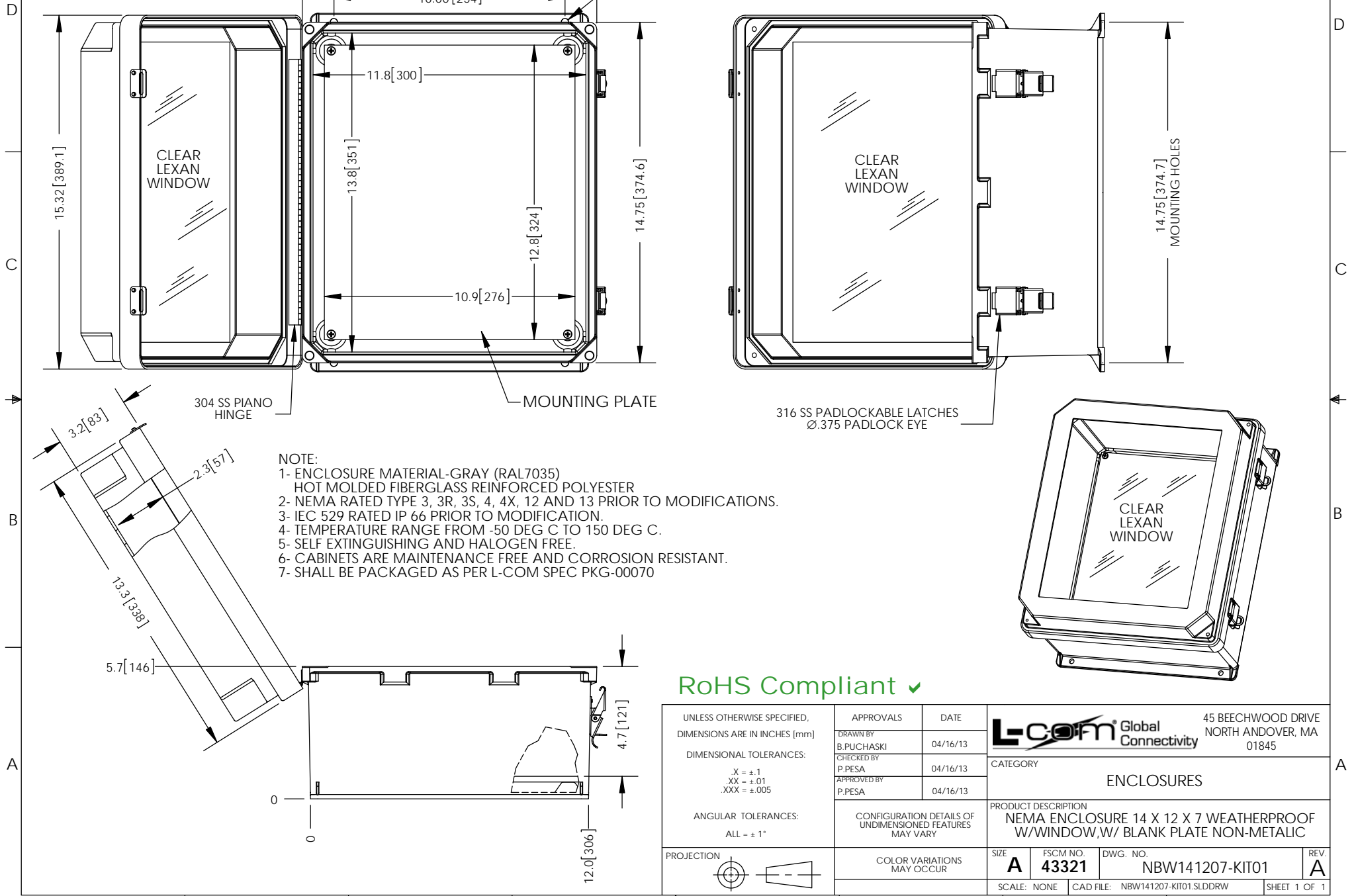


THE INFORMATION CONTAINED IN THIS DRAWING IS THE SOLE PROPERTY OF L-COM, INC. ANY REPRODUCTION IN PART OR WHOLE WITHOUT THE WRITTEN PERMISSION OF L-COM, INC. IS PROHIBITED.

REVISIONS			
REV	DESCRIPTION	DATE	APPROVED
A	INITIAL RELEASE	04/16/13	B.PUCHASKI
-	-	-	-
-	-	-	-



Ø.32 MOUNTING HOLES (4X)

CLEAR LEXAN WINDOW

CLEAR LEXAN WINDOW

CLEAR LEXAN WINDOW

304 SS PIANO HINGE

MOUNTING PLATE

316 SS PADLOCKABLE LATCHES
Ø.375 PADLOCK EYE

- NOTE:
- 1- ENCLOSURE MATERIAL-GRAY (RAL7035)
HOT MOLDED FIBERGLASS REINFORCED POLYESTER
 - 2- NEMA RATED TYPE 3, 3R, 3S, 4, 4X, 12 AND 13 PRIOR TO MODIFICATIONS.
 - 3- IEC 529 RATED IP 66 PRIOR TO MODIFICATION.
 - 4- TEMPERATURE RANGE FROM -50 DEG C TO 150 DEG C.
 - 5- SELF EXTINGUISHING AND HALOGEN FREE.
 - 6- CABINETS ARE MAINTENANCE FREE AND CORROSION RESISTANT.
 - 7- SHALL BE PACKAGED AS PER L-COM SPEC PKG-00070

RoHS Compliant ✓

UNLESS OTHERWISE SPECIFIED, DIMENSIONS ARE IN INCHES [mm] DIMENSIONAL TOLERANCES: X = ±.1 .XX = ±.01 .XXX = ±.005 ANGULAR TOLERANCES: ALL = ± 1° PROJECTION 	APPROVALS DRAWN BY B.PUCHASKI	DATE 04/16/13		45 BEECHWOOD DRIVE NORTH ANDOVER, MA 01845	
	CHECKED BY P.PESA	04/16/13		CATEGORY ENCLOSURES	
	APPROVED BY P.PESA	04/16/13	PRODUCT DESCRIPTION NEMA ENCLOSURE 14 X 12 X 7 WEATHERPROOF W/WINDOW,W/ BLANK PLATE NON-METALIC		
	CONFIGURATION DETAILS OF UNDIMENSIONED FEATURES MAY VARY		SIZE A	FSCM NO. 43321	DWG. NO. NBW141207-KIT01
COLOR VARIATIONS MAY OCCUR		SCALE: NONE	CAD FILE: NBW141207-KIT01.SLDDRW	SHEET 1 OF 1	