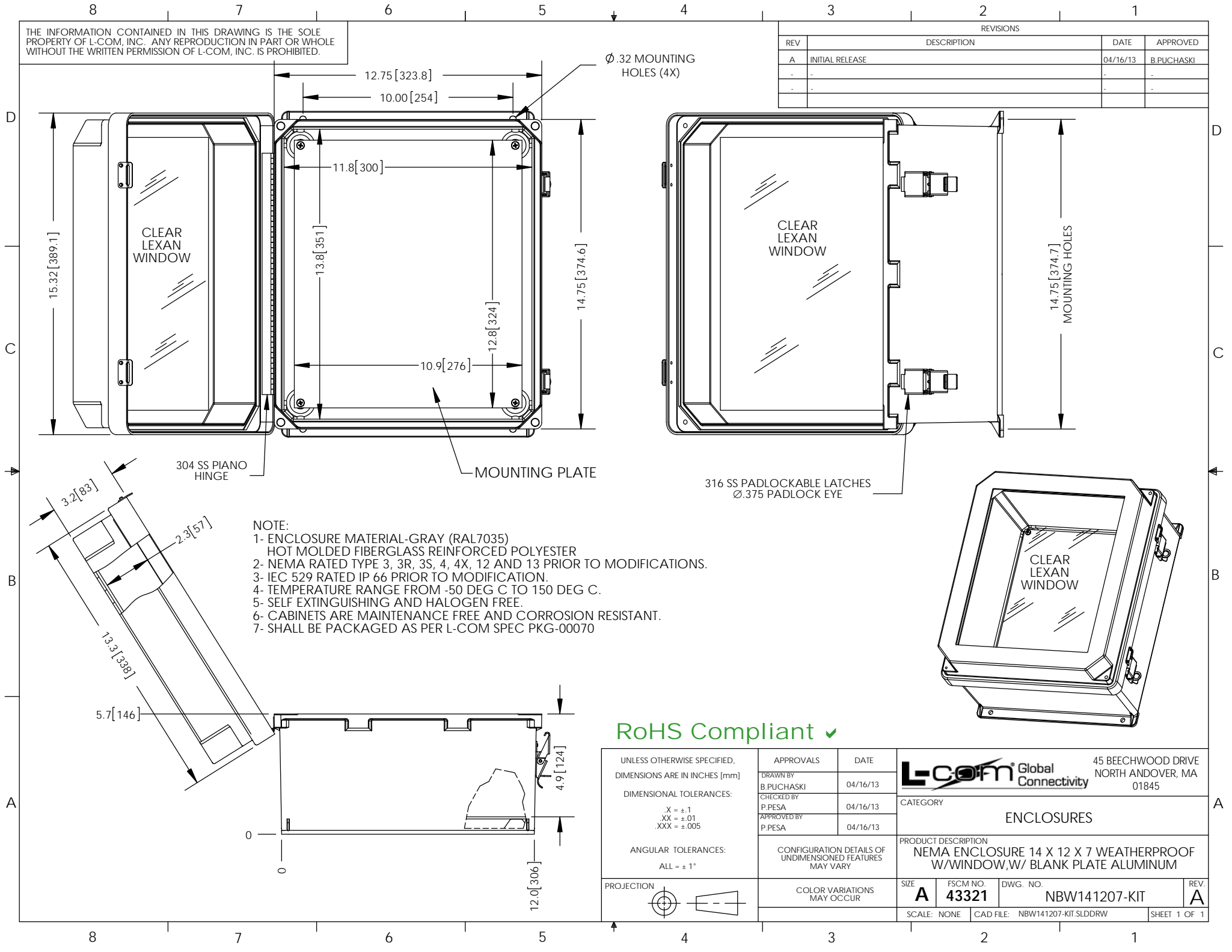


THE INFORMATION CONTAINED IN THIS DRAWING IS THE SOLE PROPERTY OF L-COM, INC. ANY REPRODUCTION IN PART OR WHOLE WITHOUT THE WRITTEN PERMISSION OF L-COM, INC. IS PROHIBITED.

REVISIONS			
REV	DESCRIPTION	DATE	APPROVED
A	INITIAL RELEASE	04/16/13	B.PUCHASKI
-	-	-	-
-	-	-	-



Ø .32 MOUNTING HOLES (4X)

CLEAR LEXAN WINDOW

CLEAR LEXAN WINDOW

CLEAR LEXAN WINDOW

304 SS PIANO HINGE

MOUNTING PLATE

316 SS PADLOCKABLE LATCHES
Ø.375 PADLOCK EYE

- NOTE:
- ENCLOSURE MATERIAL-GRAY (RAL7035) HOT MOLDED FIBERGLASS REINFORCED POLYESTER
 - NEMA RATED TYPE 3, 3R, 3S, 4, 4X, 12 AND 13 PRIOR TO MODIFICATIONS.
 - IEC 529 RATED IP 66 PRIOR TO MODIFICATION.
 - TEMPERATURE RANGE FROM -50 DEG C TO 150 DEG C.
 - SELF EXTINGUISHING AND HALOGEN FREE.
 - CABINETS ARE MAINTENANCE FREE AND CORROSION RESISTANT.
 - SHALL BE PACKAGED AS PER L-COM SPEC PKG-00070

RoHS Compliant ✓

UNLESS OTHERWISE SPECIFIED, DIMENSIONS ARE IN INCHES [mm]	APPROVALS	DATE		45 BEECHWOOD DRIVE NORTH ANDOVER, MA 01845
	DRAWN BY B.PUCHASKI	04/16/13		
DIMENSIONAL TOLERANCES: X = ±.1 .XX = ±.01 .XXX = ±.005	CHECKED BY P.PESA	04/16/13	CATEGORY ENCLOSURES	
	APPROVED BY P.PESA	04/16/13	PRODUCT DESCRIPTION NEMA ENCLOSURE 14 X 12 X 7 WEATHERPROOF W/WINDOW,W/ BLANK PLATE ALUMINUM	
ANGULAR TOLERANCES: ALL = ± 1°	CONFIGURATION DETAILS OF UNDIMENSIONED FEATURES MAY VARY		SIZE A	FSCM NO. 43321
PROJECTION 	COLOR VARIATIONS MAY OCCUR		DWG. NO. NBW141207-KIT	REV. A
			SCALE: NONE	CAD FILE: NBW141207-KIT.SLDDRW
			SHEET 1 OF 1	