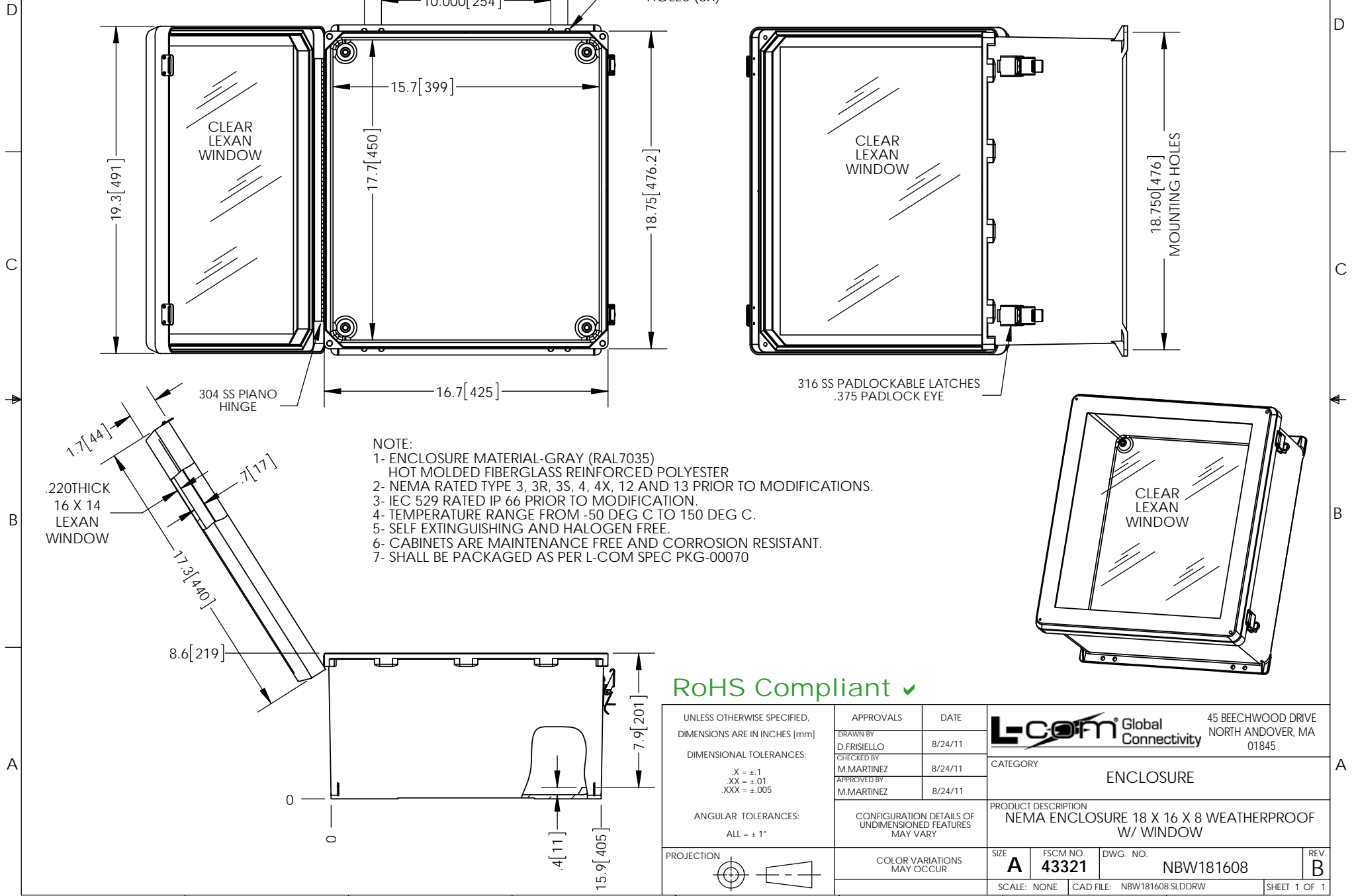


THE INFORMATION CONTAINED IN THIS DRAWING IS THE SOLE PROPERTY OF L-COM, INC. ANY REPRODUCTION IN PART OR WHOLE WITHOUT THE WRITTEN PERMISSION OF L-COM, INC. IS PROHIBITED.

REVISIONS			
REV	DESCRIPTION	DATE	APPROVED
A	INITIAL RELEASE	8/26/11	D.GRIFFIN
B	ECN 6812 NEW IMPROVED ENCLOSURE	04/24/13	B.PUCHASKI



**NOTE:**  
 1- ENCLOSURE MATERIAL-GRAY (RAL7035)  
 HOT MOLDED FIBERGLASS REINFORCED POLYESTER  
 2- NEMA RATED TYPE 3, 3R, 3S, 4, 4X, 12 AND 13 PRIOR TO MODIFICATIONS.  
 3- IEC 529 RATED IP 66 PRIOR TO MODIFICATION.  
 4- TEMPERATURE RANGE FROM -50 DEG C TO 150 DEG C.  
 5- SELF EXTINGUISHING AND HALOGEN FREE.  
 6- CABINETS ARE MAINTENANCE FREE AND CORROSION RESISTANT.  
 7- SHALL BE PACKAGED AS PER L-COM SPEC PKG-00070

RoHS Compliant ✓

UNLESS OTHERWISE SPECIFIED, DIMENSIONS ARE IN INCHES [mm]  DIMENSIONAL TOLERANCES: .X = ±.1 .XX = ±.01 .XXX = ±.005  ANGULAR TOLERANCES: ALL = ± 1°  PROJECTION	APPROVALS DRAWN BY D.FRISIELLO	DATE 8/24/11	 45 BEECHWOOD DRIVE NORTH ANDOVER, MA 01845
	CHECKED BY M.MARTINEZ	8/24/11	
	APPROVED BY M.MARTINEZ	8/24/11	PRODUCT DESCRIPTION NEMA ENCLOSURE 18 X 16 X 8 WEATHERPROOF W/ WINDOW
	CONFIGURATION DETAILS OF UNDIMENSIONED FEATURES MAY VARY	SIZE <b>A</b>	FSCM NO. <b>43321</b>
	COLOR VARIATIONS MAY OCCUR	DWG. NO. NBW181608	REV. <b>B</b>
	SCALE: NONE	CAD FILE: NBW181608.SLDDRW	SHEET 1 OF 1