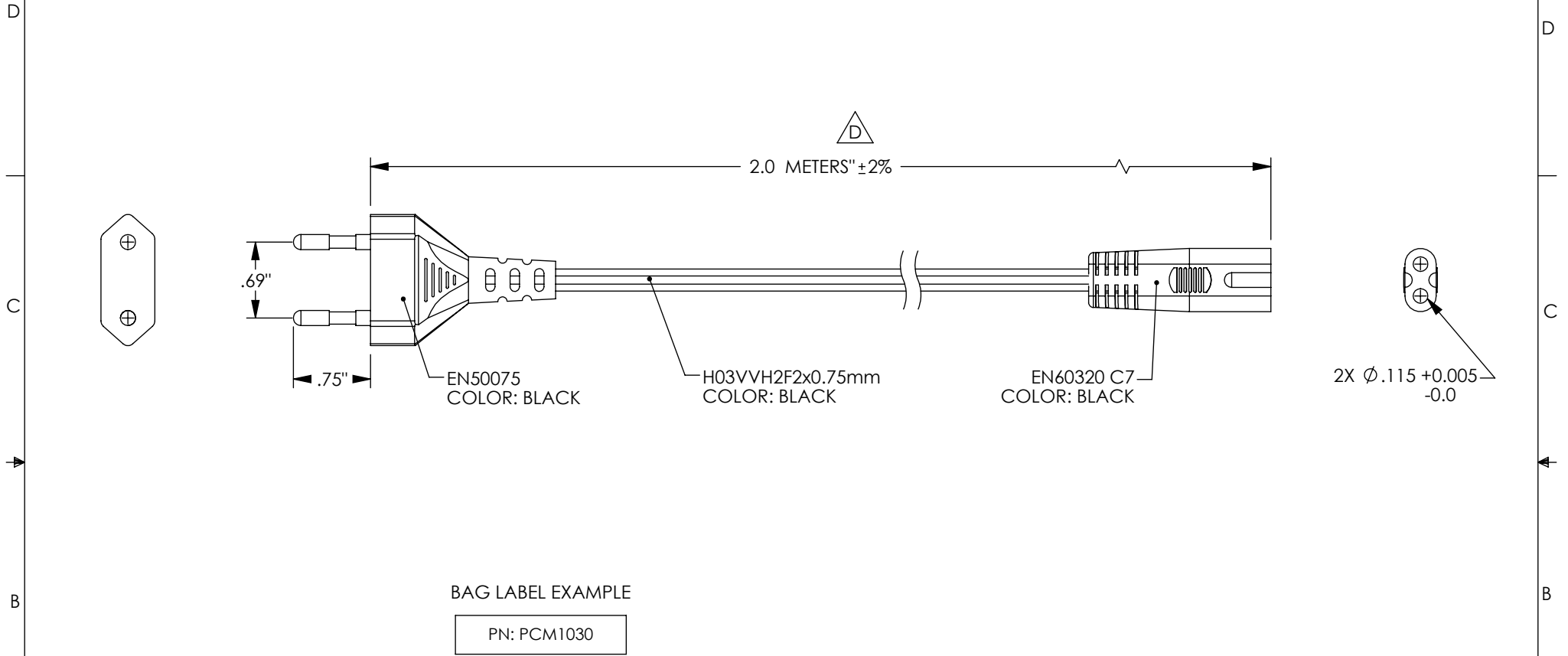


THE INFORMATION CONTAINED IN THIS DRAWING IS THE SOLE PROPERTY OF L-COM, INC. ANY REPRODUCTION IN PART OR WHOLE WITHOUT THE WRITTEN PERMISSION OF L-COM, INC. IS PROHIBITED.

REVISIONS			
REV	DESCRIPTION	DATE	APPROVED
A	INITIAL RELEASE	11/04/04	M.LAHEY
B	ECN 6814: ADDED NOTES 4 & 5, ADDED LABEL EXAMPLE, NEW FORMAT	4/25/13	D.FRISIELLO
C	ECN 7198: ADDED +/-2% TOLERANCE, REVISED ROHS, FORMAT	12/16/13	D.FRISIELLO
D	ECN 7776: CABLE LENGTH 2.0 METERS WAS 6.0 FEET	2/3/15	D. CASTRO



BAG LABEL EXAMPLE

PN: PCM1030

NOTES:

1. RATED 2.5A/250V
2. APPROVALS: VDE, OVE, SEV, SEMKO, NEMKO, FIMKO, DEMKO, KEMA, CEBC
3. LOW LEAD CONTENT<300ppm
4. CORD TO BE PLACED IN A CLEAR BAG WITH WHITE LABEL: "PN: PCM1030"
5. CENTER THE LABEL ON THE CLEAR BAG.

REGULATORY COMPLIANCE:
CE2011/65/EU(RoHS DIRECTIVE)

UNLESS OTHERWISE SPECIFIED, DIMENSIONS ARE IN INCHES [mm] OVERALL CABLE LENGTH TOLERANCE: ≤12 [305] = +1 [25] / -0 >12 [305] ≤60 [1524] = +2 [51] / -0 >60 [1524] ≤120 [3048] = +4 [102] / -0 >120 [3048] ≤300 [7620] = +6 [152] / -0 >300 [7620] = +5% / -0%	APPROVALS	DATE		45 BEECHWOOD DRIVE NORTH ANDOVER, MA 01845
	DRAWN BY M.LAHEY	11/04/04		
ALL OTHER DIMENSIONAL TOLERANCES: .X = ± .2 [5.08] .XX = ± .02 [1.51] .XXX = ±.005 [1.13]	CHECKED BY C.MCCORMICK	11/04/04	CATEGORY POWER PRODUCTS	
	APPROVED BY D.PARHAM	11/04/04	PRODUCT DESCRIPTION POWER CORD EN50075 TO C7	
PROJECTION 	CONFIGURATION DETAILS OF UNDIMENSIONED FEATURES MAY VARY	COLOR VARIATIONS MAY OCCUR	SIZE A	FSCM NO. 43321
			DWG. NO. PCM1030	REV. D
			SCALE: NONE	CAD FILE: PCM1030.SLDDRW
				SHEET 1 OF 1