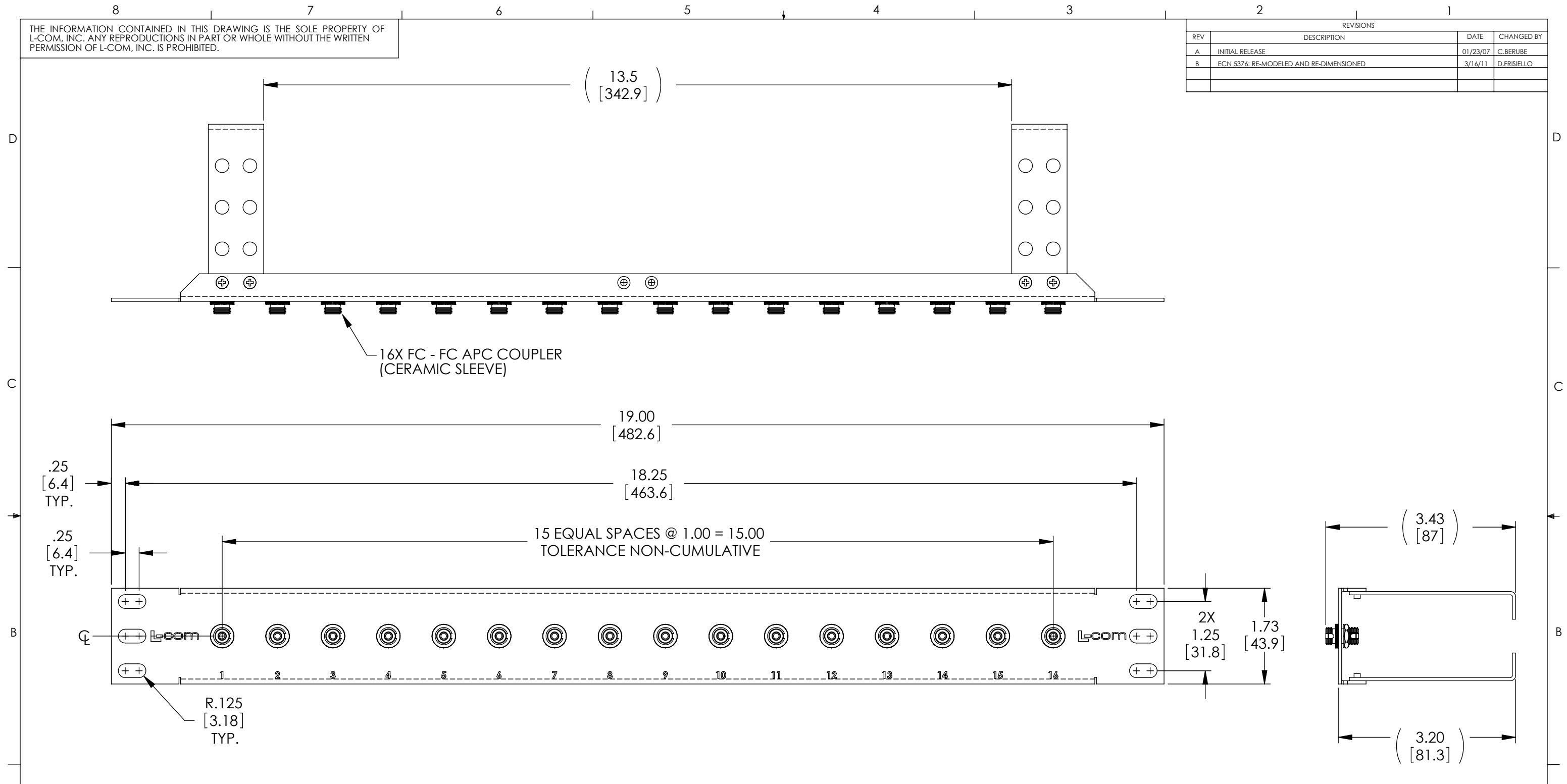


THE INFORMATION CONTAINED IN THIS DRAWING IS THE SOLE PROPERTY OF L-COM, INC. ANY REPRODUCTIONS IN PART OR WHOLE WITHOUT THE WRITTEN PERMISSION OF L-COM, INC. IS PROHIBITED.

| REVISIONS | | | |
|-----------|---|----------|-------------|
| REV | DESCRIPTION | DATE | CHANGED BY |
| A | INITIAL RELEASE | 01/23/07 | C.BERUBE |
| B | ECN 5376: RE-MODELED AND RE-DIMENSIONED | 3/16/11 | D.FRISIELLO |
| | | | |
| | | | |



- NOTES:
1. MATERIAL: .06 THICK COLD ROLLED STEEL.
 2. PANEL FINISH: FLAT BLACK POWDER COAT.
 3. SILKSCREEN COLOR: WHITE.
 4. PANEL SHALL BE PACKAGED IN ACCORDANCE WITH L-COM SPECIFICATION PS-0014.
 5. PANEL ASSEMBLY IS SHIPPED WITH DUST CAPS INSTALLED. (NOT SHOWN)

RoHS Compliant ✓

UNLESS OTHERWISE SPECIFIED, DIMENSIONS ARE IN INCHES [mm]
 OVERALL CABLE LENGTH TOLERANCE:
 ≤12 [305] = +1 [25] / -0
 >12 [305] ≤60 [1524] = +2[51] / -0
 >60 [1524] ≤120 [3048] = +4 [102] / -0
 >120 [3048] ≤300 [7620] = +6 [152] / -0
 >300 [7620] = +5% / -0%
 ALL OTHER DIMENSIONAL TOLERANCES:
 .X = ±.2
 .XX = ±.02
 .XXX = ±.005

| APPROVALS | DATE |
|-------------------------|----------|
| DRAWN BY C.BERUBE | 01/23/07 |
| CHECKED BY J.ROBERTS | 01/23/07 |
| APPROVED BY P.MCNEIL | 01/23/07 |

L-com Global Connectivity
 45 BEECHWOOD DRIVE
 NORTH ANDOVER, MA
 01845

| | | | |
|---|--------------------------|-----------------------------|------------------|
| CATEGORY RACK PANELS | | | |
| PRODUCT DESCRIPTION 1U RACK MNT PNL W/16 FC SM CPLR+CM | | | |
| SIZE B | FSCM NO. 43321 | DWG. NO. PR175FC16CM-SMA | REV. B |
| SCALE: 1:1.75 CAD FILE: PR175FC16CM-SMA.SLDDRW | | | SHEET 1 OF 1 |

