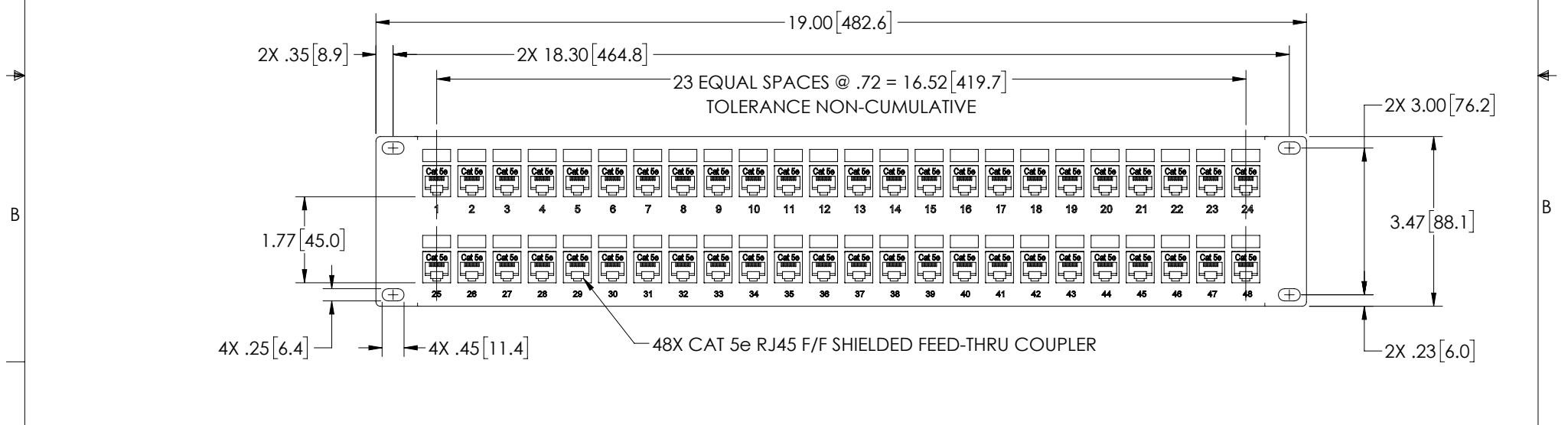
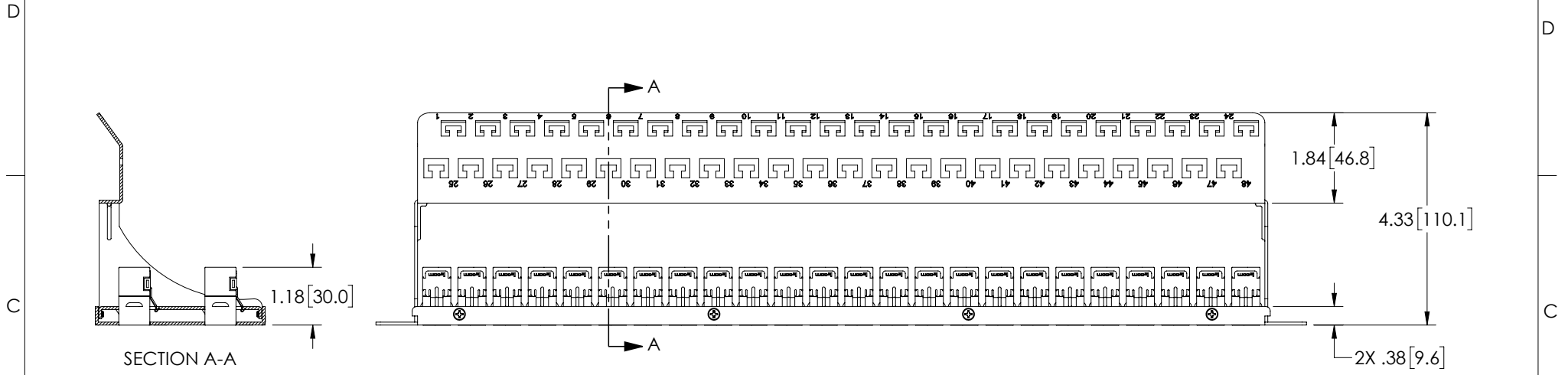


THE INFORMATION CONTAINED IN THIS DRAWING IS THE SOLE PROPERTY OF L-COM, INC. ANY REPRODUCTION IN PART OR WHOLE WITHOUT THE WRITTEN PERMISSION OF L-COM, INC. IS PROHIBITED.

REVISIONS			
REV	DESCRIPTION	DATE	APPROVED
A	REV A DRAWING RELEASED	04/18/2019	MMARTINEZ



- NOTES:
1. DIMENSIONS FOR REFERENCE ONLY.
 2. MATERIAL: .06 THICK COLD ROLLED STEEL.
 3. PANEL FINISH: FLAT BLACK POWDER COAT.
 4. SILKSCREEN COLOR: WHITE.
 5. PANEL ASSEMBLY SHALL BE PACKAGED IN ACCORDANCE WITH L-COM SPECIFICATION PS-0014.

UNLESS OTHERWISE SPECIFIED, DIMENSIONS ARE IN INCHES [mm] OVERALL CABLE LENGTH TOLERANCE: ≤ 12 [305] = +1 [25] / -0 >12 [305] ≤ 60 [1524] = +2 [51] / -0 >60 [1524] ≤ 120 [3048] = +4 [102] / -0 >120 [3048] ≤ 300 [7620] = +6 [152] / -0 >300 [7620] = +5% / -0% ALL OTHER DIMENSIONAL TOLERANCES: .X = $\pm .2$ [5.08] .XX = $\pm .02$ [5.1] .XXX = $\pm .005$ [1.3]	APPROVALS DRAWN BY DZINN	DATE 04/08/2019		50 HIGH STREET NORTH ANDOVER, MA 01845		
	CHECKED BY DFRISIELLO	DATE 04/08/2019		CATEGORY RACK PANELS		
	APPROVED BY MMARTINEZ	DATE 04/08/2019	PRODUCT DESCRIPTION PNL,2U RACK w/48 C5E SHLD CPLR+CM			
	PROJECTION 	CONFIGURATION DETAILS OF UNDIMENSIONED FEATURES MAY VARY	COLOR VARIATIONS MAY OCCUR	SIZE A	FSCM NO. 43321	DWG. NO. PR35-SC5E-48-CM

SCALE: NONE | CAD FILE: PR35-SC5E-48-CM.SLDDRW | SHEET 1 OF 1