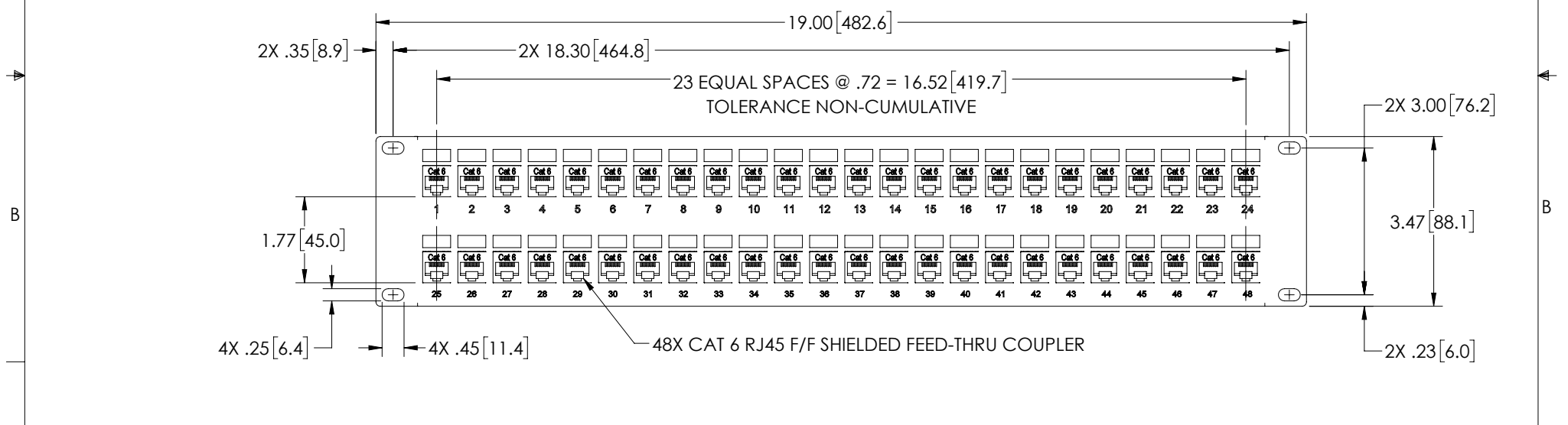
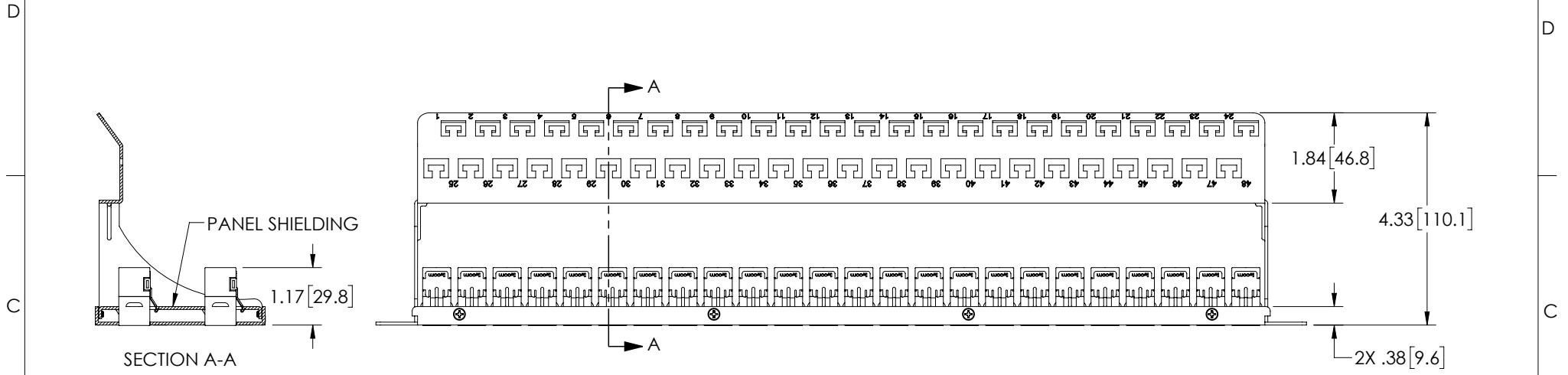


8 7 6 5 4 3 2 1

THE INFORMATION CONTAINED IN THIS DRAWING IS THE SOLE PROPERTY OF L-COM, INC. ANY REPRODUCTION IN PART OR WHOLE WITHOUT THE WRITTEN PERMISSION OF L-COM, INC. IS PROHIBITED.

| REVISIONS | | | |
|-----------|------------------------|------------|-----------|
| REV | DESCRIPTION | DATE | APPROVED |
| A | REV A DRAWING RELEASED | 04/18/2019 | MMARTINEZ |
| | | | |
| | | | |



- NOTES:
1. DIMENSIONS FOR REFERENCE ONLY.
 2. MATERIAL: .06 THICK COLD ROLLED STEEL.
 3. PANEL FINISH: FLAT BLACK POWDER COAT.
 4. SILKSCREEN COLOR: WHITE.
 5. PANEL ASSEMBLY SHALL BE PACKAGED IN ACCORDANCE WITH L-COM SPECIFICATION PS-0014.

| | | | | | | |
|--|--------------------------------|--|---|--|--------------------------|----------------------------|
| UNLESS OTHERWISE SPECIFIED, DIMENSIONS ARE IN INCHES [mm] OVERALL CABLE LENGTH TOLERANCE: ≤12 [305] = +1 [25] / -0 >12 [305] ≤60 [1524] = +2 [51] / -0 >60 [1524] ≤120 [3048] = +4 [102] / -0 >120 [3048] ≤300 [7620] = +6 [152] / -0 >300 [7620] = +5% / -0% ALL OTHER DIMENSIONAL TOLERANCES: .X = ± .2 [5.08] .XX = ± .02 [5.1] .XXX = ±.005 [1.3] | APPROVALS DRAWN BY DZINN | DATE 04/08/2019 | | 50 HIGH STREET NORTH ANDOVER, MA 01845 | | |
| | CHECKED BY DFRISIELLO | DATE 04/08/2019 | | CATEGORY RACK PANELS | | |
| | APPROVED BY MMARTINEZ | DATE 04/08/2019 | PRODUCT DESCRIPTION PNL,2U RACK w/48 C6 SHLD CPLR+CM | | | |
| | PROJECTION | CONFIGURATION DETAILS OF UNDIMENSIONED FEATURES MAY VARY | COLOR VARIATIONS MAY OCCUR | SIZE A | FSCM NO. 43321 | DWG. NO. PR35-SC6-48-CM |

SCALE: NONE | CAD FILE: PR35-SC6-48-CM.SLDDRW | SHEET 1 OF 1