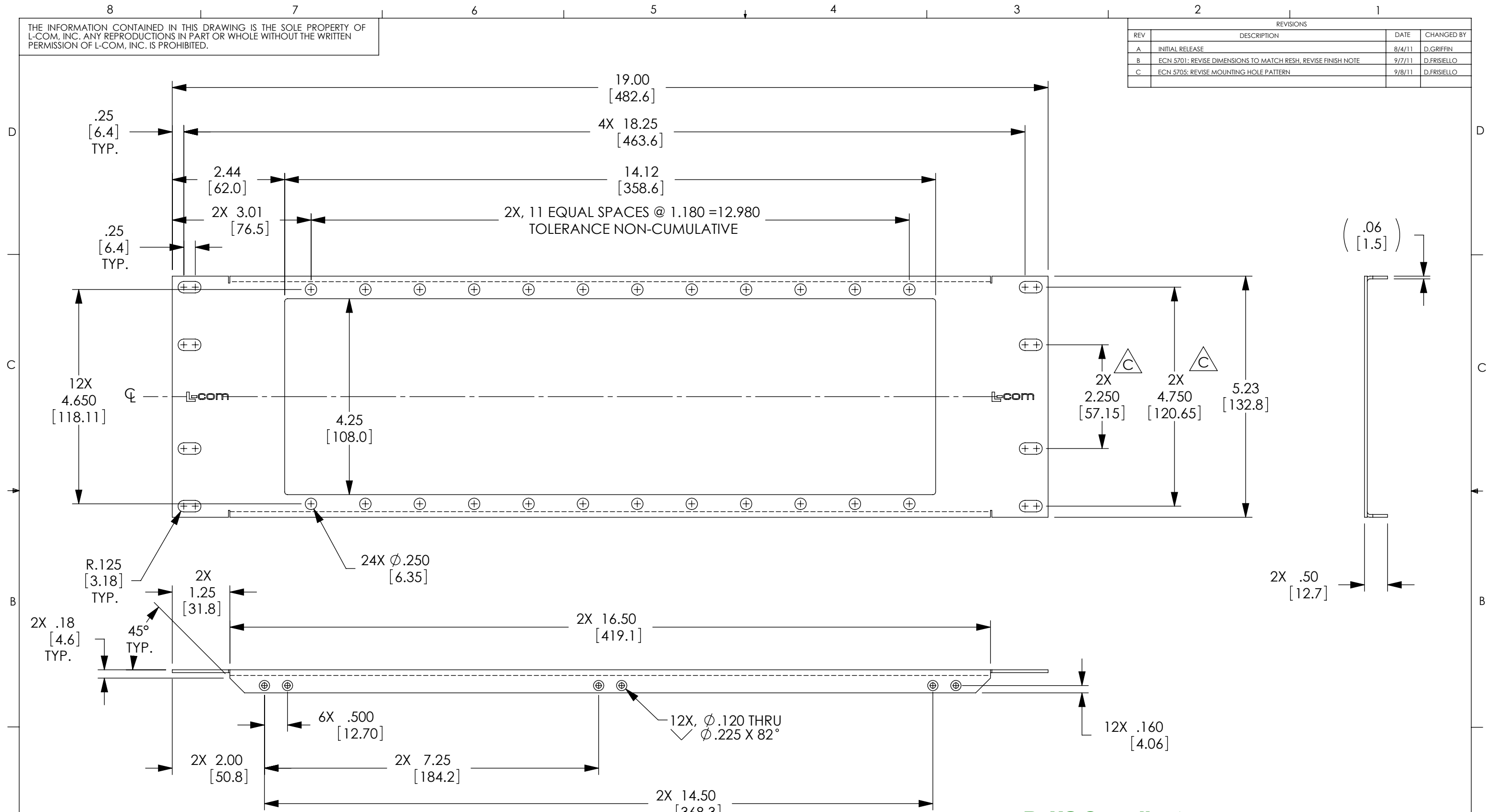


THE INFORMATION CONTAINED IN THIS DRAWING IS THE SOLE PROPERTY OF L-COM, INC. ANY REPRODUCTIONS IN PART OR WHOLE WITHOUT THE WRITTEN PERMISSION OF L-COM, INC. IS PROHIBITED.

REVISIONS			
REV	DESCRIPTION	DATE	CHANGED BY
A	INITIAL RELEASE	8/4/11	D.GRIFFIN
B	ECN 5701: REVISE DIMENSIONS TO MATCH RESH, REVISE FINISH NOTE	9/7/11	D.FRISIELLO
C	ECN 5705: REVISE MOUNTING HOLE PATTERN	9/8/11	D.FRISIELLO



- NOTES:
1. MATERIAL: .06 THICK COLD ROLLED STEEL.
 2. FINISH: BLACK POWDER COAT.
 3. SILKSCREEN PER: 1AP14-011.DXF, COLOR: WHITE
 4. ALL INSIDE RADII .031 UNLESS OTHERWISE SPECIFIED.
 5. BREAK ALL SHARP EDGES AND DEBURR ALL HOLES.
 6. ALL DIMENSIONS, TOLERANCES, AND THREAD SIZES ARE AFTER FINISH IS APPLIED.

RoHS Compliant ✓

UNLESS OTHERWISE SPECIFIED, DIMENSIONS ARE IN INCHES [mm]
 DIMENSIONAL TOLERANCES:
 .X = ±.1
 .XX = ±.01
 .XXX = ±.005
 ANGULAR TOLERANCES:
 ALL = ± 1°

APPROVALS	DATE
D.FRISIELLO	8/2/11
D.PARHAM	8/2/11
M.MARTINEZ	8/2/11

CONFIGURATION DETAILS OF UNDIMENSIONED FEATURES MAY VARY
 COLOR VARIATIONS MAY OCCUR

L-com Global Connectivity
 45 BEECHWOOD DRIVE
 NORTH ANDOVER, MA 01845

CATEGORY: RACK PANELS
 PRODUCT DESCRIPTION: 3U x 19" W/12 POSITIONS

SIZE: B	FSCM NO.: 43321	DWG. NO.: PR525-FSP	REV.: C
----------------	------------------------	----------------------------	----------------

SCALE: 1:1 CAD FILE: PR525-FSP.SLDRW SHEET 1 OF 1

