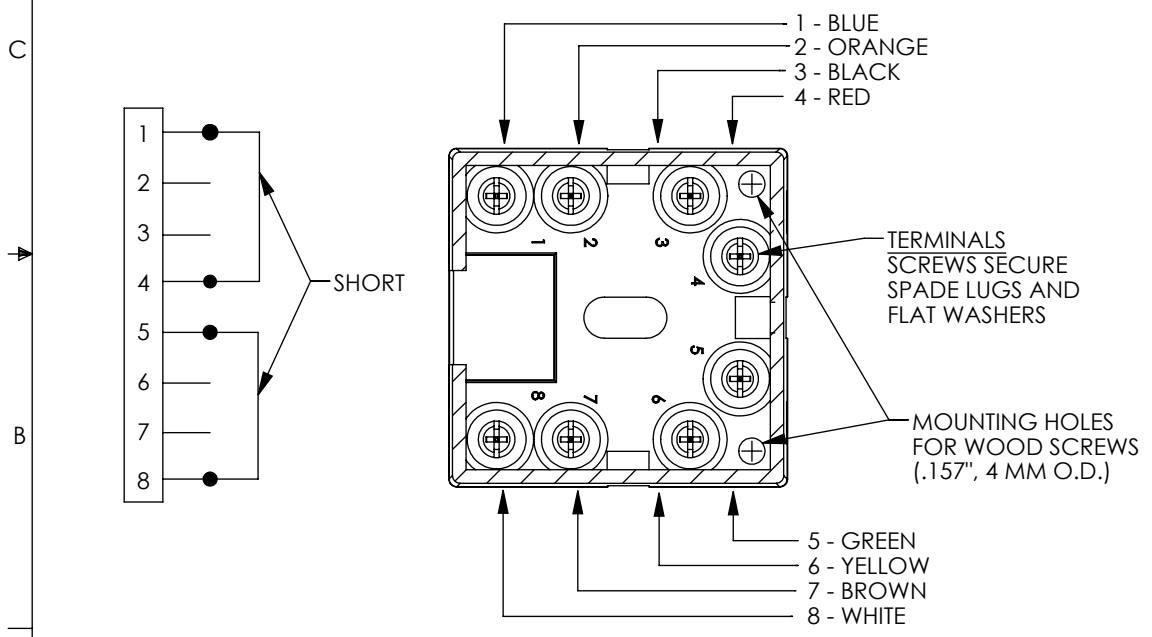
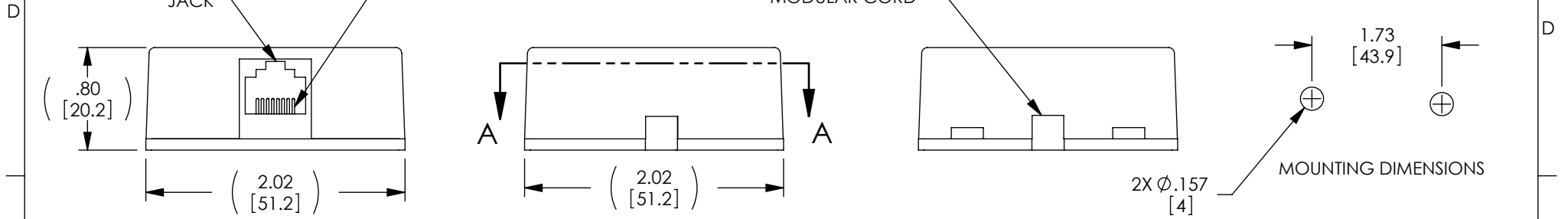
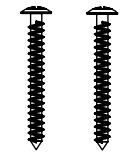
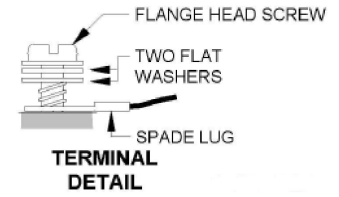


THE INFORMATION CONTAINED IN THIS DRAWING IS THE SOLE PROPERTY OF L-COM, INC. ANY REPRODUCTION IN PART OR WHOLE WITHOUT THE WRITTEN PERMISSION OF L-COM, INC. IS PROHIBITED.

REVISIONS			
REV	DESCRIPTION	DATE	APPROVED
A	INITIAL RELEASE	12/5/11	D.GRIFFIN



(SUPPLIED WITH DOUBLE-SIDED FOAM TAPE FOR SURFACE MOUNTING WITHOUT HARDWARE)



SUPPLIED WITH TWO 3/4" PHILLIPS HEAD WOOD SCREWS

**SECTION A-A**

**RoHS Compliant**

**NOTES:**

1. BASE AND COVER ARE HIGH IMPACT THERMOPLASTIC, COLOR: BEIGE.
2. CABLE ENTRIES PERMIT REAR, SIDES OR BOTTOM ENTRY.
3. COVER SNAPS ON.
4. INTERNAL LEADS HAVE COLOR CODED INSULATION PER USOC 8.
5. JACK CONTACTS HAVE 30µ GOLD PLATING.
6. ADAPTOR IS U.L. LISTED AND C.S.A. CERTIFIED.
7. COMPONENT ASSEMBLY SHALL BE INDIVIDUALLY PACKAGED IN ACCORDANCE WITH L-COM SPECIFICATION PS-0031.

UNLESS OTHERWISE SPECIFIED, DIMENSIONS ARE IN INCHES [mm] OVERALL CABLE LENGTH TOLERANCE: ≤12 [305] = +1 [25] / -0 >12 [305] ≤60 [1524] = +2 [51] / -0 >60 [1524] ≤120 [3048] = +4 [102] / -0 >120 [3048] ≤300 [7620] = +6 [152] / -0 >300 [7620] = +3% / -0%	APPROVALS	DATE		45 BEECHWOOD DRIVE NORTH ANDOVER, MA 01845		
	DRAWN BY D.FRISIELLO	12/1/11				
ALL OTHER DIMENSIONAL TOLERANCES: .X = ±.2 .XX = ±.02 .XXX = ±.005	CHECKED BY D.GALLAGHER	12/1/11	CATEGORY <b>MODULAR</b>			
	APPROVED BY D.GALLAGHER	12/1/11	PRODUCT DESCRIPTION <b>RJ45(8X8) JACK W/SHORTING BARS</b>			
PROJECTION 	CONFIGURATION DETAILS OF UNDIMENSIONED FEATURES MAY VARY	COLOR VARIATIONS MAY OCCUR	SIZE <b>A</b>	FSCM NO. <b>43321</b>	DWG. NO. <b>RJ31X</b>	REV. <b>A</b>
SCALE: NONE			CAD FILE: RJ31X.SLDRW		SHEET 1 OF 1	