

6

5

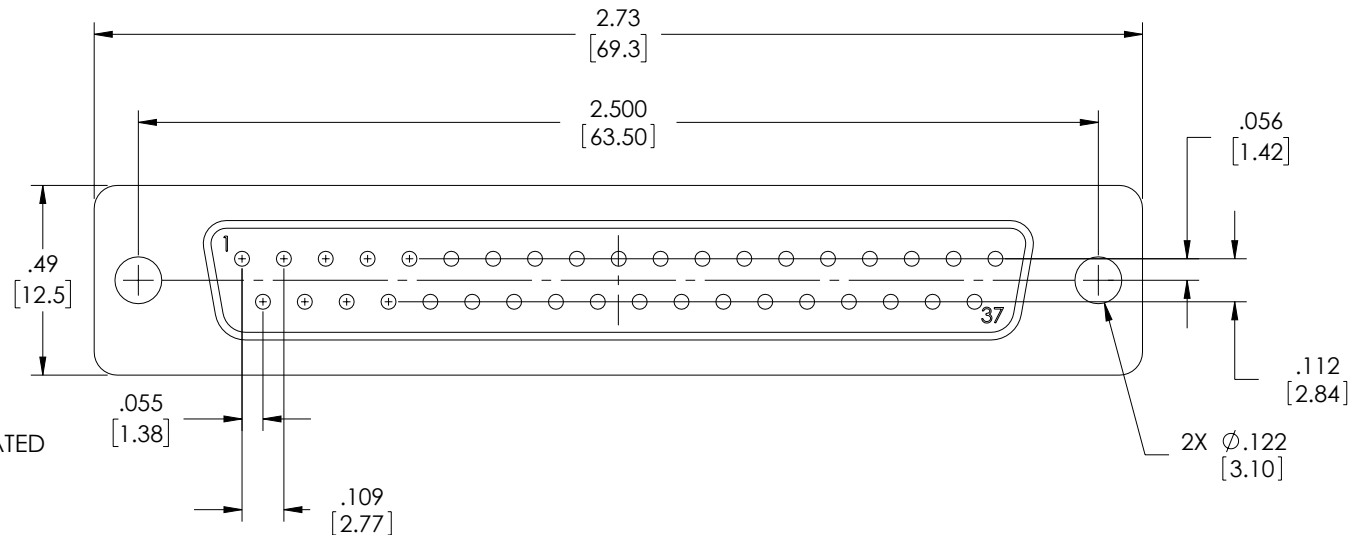
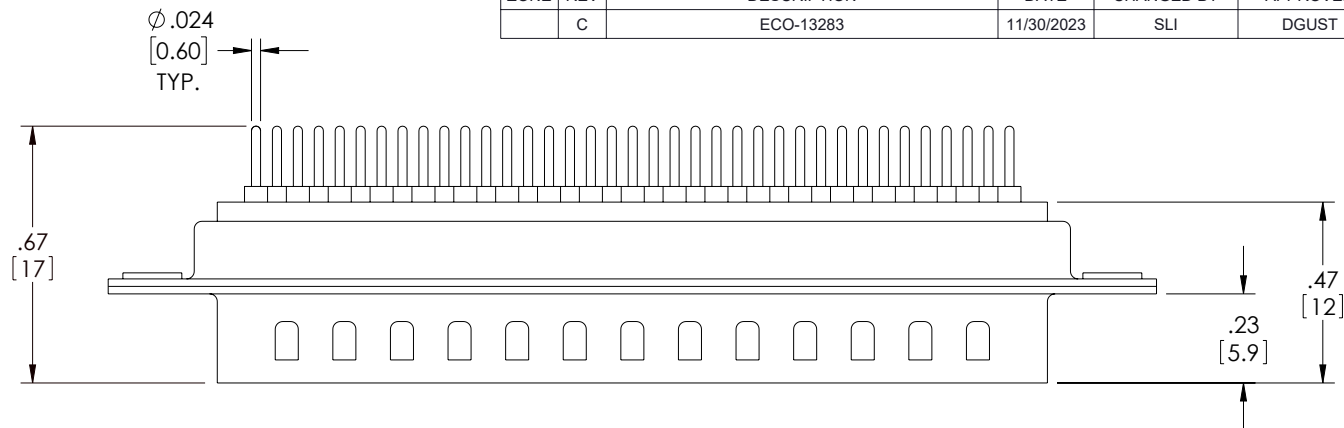
4

3

2

1

REVISION					
ZONE	REV	DESCRIPTION	DATE	CHANGED BY	APPROVED
	C	ECO-13283	11/30/2023	SLI	DGUST



NOTES:



MATERIALS:  
 SHELL: COLD ROLLED STEEL  
 CONTACTS: BRASS  
 INSULATOR: THERMOPLASTIC PBT, UL94V-0, BLUE

FINISH:  
 FRONT SHELL: NICKEL PLATED; BACK SHELL: TIN PLATED  
 MATING CONTACTS: GOLD SELECTIVE PLATED

ELECTRICAL:  
 CURRENT RATING: 1 AMP  
 DIELECTRIC WITHSTANDING VOLTAGE: 1000 VAC  
 INSULATION RESISTANCE: 1000 MΩ PER MINUTE @ 500 VDC  
 CONTACT RESISTANCE: 25mΩ MAX

MISCELLANEOUS:  
 OPERATING TEMPERATURE: -55°C ~ +105°C  
 COMPONENT SHALL BE INDIVIDUALLY PACKAGED IN ACCORDANCE WITH L-COM SPECIFICATION PS-0031.

REGULATORY COMPLIANCE:  
 EU RoHS DIRECTIVE (MOST RECENT RELEASED VERSION)

THE INFORMATION CONTAINED IN THIS DRAWING IS THE SOLE PROPERTY OF INFINITE ELECTRONICS, INC. ANY REPRODUCTION IN PART OR WHOLE WITHOUT THE WRITTEN PERMISSION OF INFINITE ELECTRONICS, INC. IS PROHIBITED. THESE COMMODITIES, TECHNOLOGY OR SOFTWARE WERE EXPORTED FROM THE UNITED STATES IN ACCORDANCE WITH THE EXPORT ADMINISTRATION REGULATIONS. DIVERSION CONTRARY TO U.S. LAW PROHIBITED.

UNLESS OTHERWISE SPECIFIED LEADING DIMENSIONS ARE INCHES DIMENSIONS IN [ ] ARE MILLIMETERS

TOLERANCES:

X = ±.2 [5]	FRACTIONS ± 1/32
.XX = ±.02 [0.5]	ANGLES ± 1°
.XXX = ±.005 [0.13]	

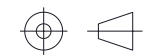
CABLE LENGTH TOLERANCES:

≤12 [305]	= +1 [25] / -0
>12 [305] ≤ 60 [1524]	= +2 [51] / -0
>60 [1524] ≤ 120 [3048]	= +4 [102] / -0
>120 [3048] ≤ 300 [7620]	= +6 [152] / -0
>300 [7620]	= +5% / -0

ALL DIMENSIONS ARE FOR REFERENCE ONLY AND SUBJECT TO CHANGE WITHOUT NOTICE UN-DIMENSIONED/NON-CRITICAL FEATURES MAY VARY IN SIZE AND LOCATION COLORS MAY VARY



an INFINIT@ brand  
 Website: www.L-com.com  
 Phone: 1.800.341.5266 | 1.978.682.6936



INTERPRET ALL DIMENSIONS AND TOLERANCES PER ASME Y14.5

SCALE NONE SHEET 1 OF 1

DESCRIPTION				
CONNECTOR, DB37M PCB				
SIZE	CAGE CODE	DRAWN BY	ITEM NO.	REV
A	43321	SLI	SD37P-PC	C

6

5

4

3

2

1