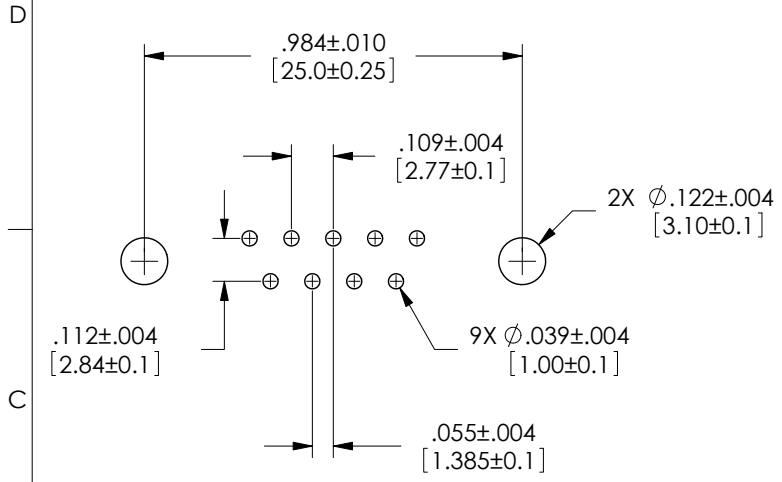
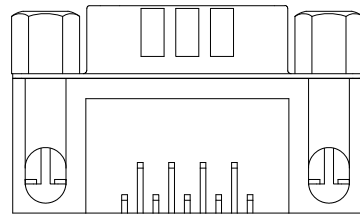
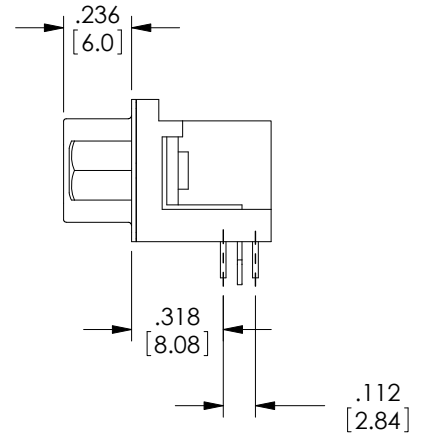
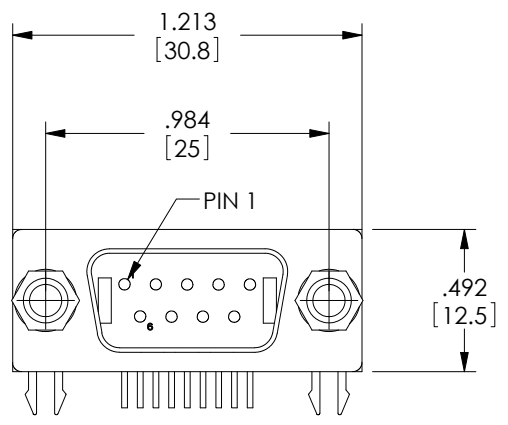
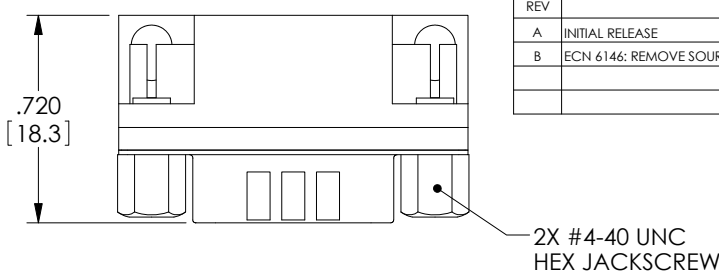


THE INFORMATION CONTAINED IN THIS DRAWING IS THE SOLE PROPERTY OF L-COM, INC. ANY REPRODUCTION IN PART OR WHOLE WITHOUT THE WRITTEN PERMISSION OF L-COM, INC. IS PROHIBITED.

| REVISIONS |                                   |        |             |
|-----------|-----------------------------------|--------|-------------|
| REV       | DESCRIPTION                       | DATE   | APPROVED    |
| A         | INITIAL RELEASE                   | 5/3/11 | D.GRIFFIN   |
| B         | ECN 6146: REMOVE SOURCE REFERENCE | 5/7/12 | D.FRISIELLO |
|           |                                   |        |             |



**PCB LAYOUT**



**NOTES:**

**MATERIALS:**

CONTACTS: BRASS  
SHELLS: COLD ROLLED STEEL  
INSULATOR: PBT, UL94V-0, BLACK  
JACKSCREWS: BRASS

**FINISH:**

CONTACT SURFACES: GOLD FLASH  
SHELL: NICKEL PLATED  
JACKSCREWS: NICKEL PLATED

**ELECTRICAL:**

DIELECTRIC WITHSTANDING VOLTAGE: AC 1000 V r.m.s.  
CONTACT CURRENT RATING: 1 AMPERE  
INSULATION RESISTANCE: 500 MEGOHMS MINIMUM AT DC 500V  
CONTACT RESISTANCE: 25 MILLIOHMS MAXIMUM

**MISCELLANEOUS:**

OPERATING TEMPERATURE: -55°C ~ 105°C  
ALL DIMENSIONS ARE FOR REFERENCE ONLY  
CONNECTOR SHALL BE PACKAGED 10 CONNECTORS PER TRAY AND LABELED WITH STANDARD L-COM PRODUCT LABEL.

**RoHS Compliant** ✓



|   |  |                                    |                             |  |                  |
|---|--|------------------------------------|-----------------------------|--|------------------|
| UNLESS OTHERWISE SPECIFIED,<br>DIMENSIONS ARE IN INCHES [mm]<br>OVERALL CABLE LENGTH TOLERANCE:<br>≤12 [305] = +1 [25] / -0<br>>12 [305] ≤60 [1524] = +2 [51] / -0<br>>60 [1524] ≤120 [3048] = +4 [102] / -0<br>>120 [3048] ≤300 [7620] = +6 [152] / -0<br>>300 [7620] = +3% / -0%<br>ALL OTHER DIMENSIONAL TOLERANCES:<br>.X = ±.2<br>.XX = ±.02<br>.XXX = ±.005<br>PROJECTION<br> | APPROVALS<br>D. CASTRO<br>CHECKED BY<br>D. PARHAM<br>APPROVED BY<br>S. SMITH | DATE<br>4/1/11<br>4/7/11<br>5/2/11 |                             | 45 BEECHWOOD DRIVE<br>NORTH ANDOVER, MA<br>01845 |                  |
|   | CATEGORY<br>DATA   |                                    |                             | PRODUCT DESCRIPTION<br>CONNECTOR, DB9M 90DEG PCB |                  |
|   | COLOR VARIATIONS<br>MAY OCCUR  | SIZE<br><b>A</b>                   | FSCM NO.<br><b>43321</b>    | DWG. NO.<br><b>SD9P-RA-PC</b>                    | REV.<br><b>B</b> |
|   | 1AC06-011  | SCALE: NONE                        | CAD FILE: SD9P-RA-PC.SLDDRW | SHEET 1 OF 1                                     |                  |