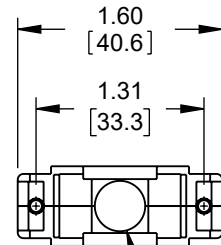
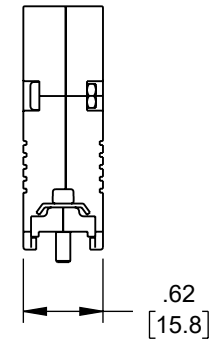
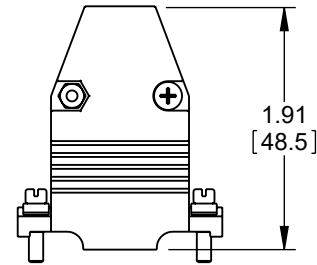
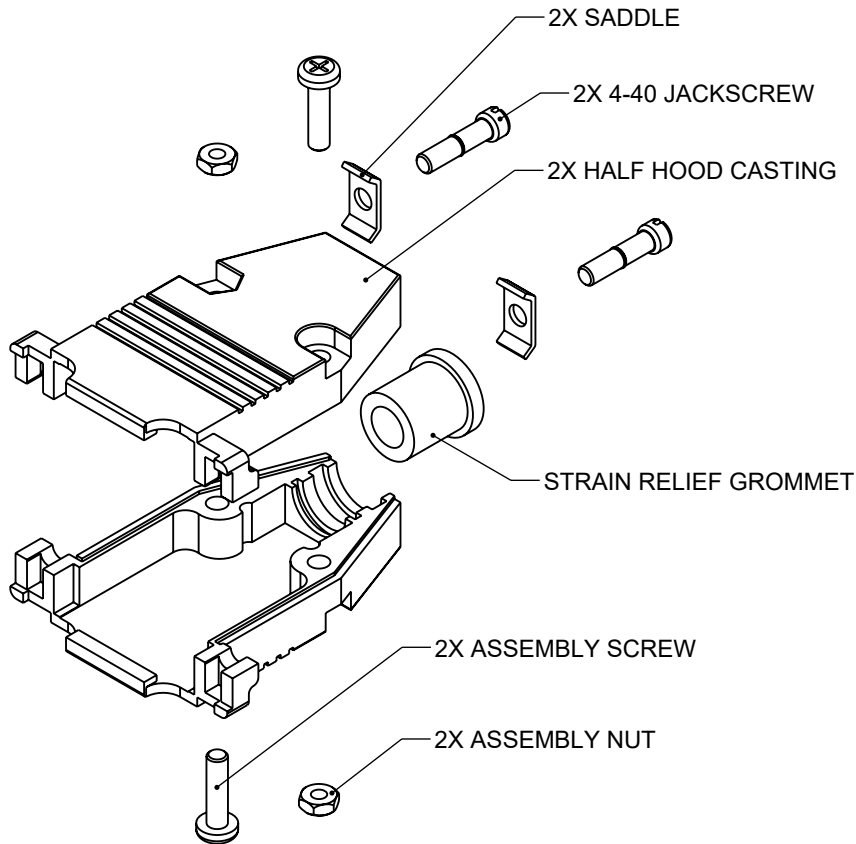


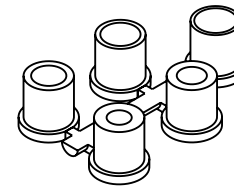
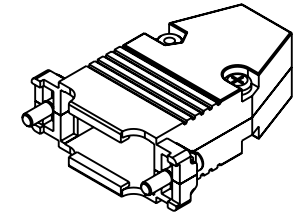
THE INFORMATION CONTAINED IN THIS DRAWING IS THE SOLE PROPERTY OF L-COM, INC. ANY REPRODUCTION IN PART OR WHOLE WITHOUT THE WRITTEN PERMISSION OF L-COM, INC. IS PROHIBITED.

REVISION					
ZONE	REV	DESCRIPTION	DATE	CHANGED BY	APPROVED
B8	E	ECO-12340	06/29/2023	SREITER	DGUST

D
C
B
A



Ø.394 [10.01]



NOTES:

MATERIALS:

HOOD: DIE-CAST ZINC ALLOY
 JACKSCREW: STEEL OR STAINLESS STEEL
 SADDLE & ASSEMBLY HARDWARE: STEEL OR STAINLESS STEEL
 STRAIN RELIEF GROMMETS: PVC, BLACK

FINISH:


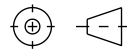
HOOD: NICKEL PLATED, MATTE FINISH ON MAJOR SURFACES
 JACKSCREW: NICKEL PLATED; PASSIVATE IS OPTION FOR STAINLESS STEEL
 SADDLE & ASSEMBLY HARDWARE: NICKEL PLATED; PASSIVATE IS OPTION FOR STAINLESS STEEL

MISCELLANEOUS:

INTENDED FOR USE WITH 15 PIN STANDARD AND 26 PIN HIGH DENSITY D-SUBMINIATURE CONNECTORS.
 SUPPLIED WITH 5 STRAIN RELIEF GROMMETS FOR CABLING HAVING DIAMETERS RANGING FROM .190 TO .335 INCH.

REGULATORY COMPLIANCE:

EU RoHS DIRECTIVE (MOST RECENT RELEASED VERSION)

UNLESS OTHERWISE SPECIFIED, DIMENSIONS ARE IN INCHES [mm] OVERALL CABLE LENGTH TOLERANCE: ≤12 [305] = +1 [25] / -0 >12 [305] ≤60 [1524] = +2 [51] / -0 >60 [1524] ≤120 [3048] = +4 [102] / -0 >120 [3048] ≤300 [7620] = +6 [152] / -0 >300 [7620] = +5% / -0 ALL OTHER DIMENSIONAL TOLERANCES: .X = ± .2 [5] FRACTIONS ± 1/32 .XX = ± .02 [5] ANGLES ± 1° .XXX = ± .005 [1.3]	APPROVALS D.FRISIELLO	DATE 02/04/2008	 50 High Street, West Mill, North Andover, MA 01845 USA. Phone: 1.800.341.5266 1.978.682.6936		
	CHECKED BY R.FORTIN	02/04/2008		CATEGORY DATA CABLING	
	APPROVED BY S.SMITH	02/04/2008		PRODUCT DESCRIPTION DB15 & HD26 HOOD KIT	
	CONFIGURATION DETAILS OF UNDIMENSIONED FEATURES MAY VARY	COLOR VARIATIONS MAY OCCUR		SIZE A	CAGE CODE 43321
THIRD-ANGLE PROJECTION 	REF	SCALE: NONE	CAD FILE: SDC15AG.SLDDRW	SHEET 1 OF 1	

8 7 6 5 4 3 2 1