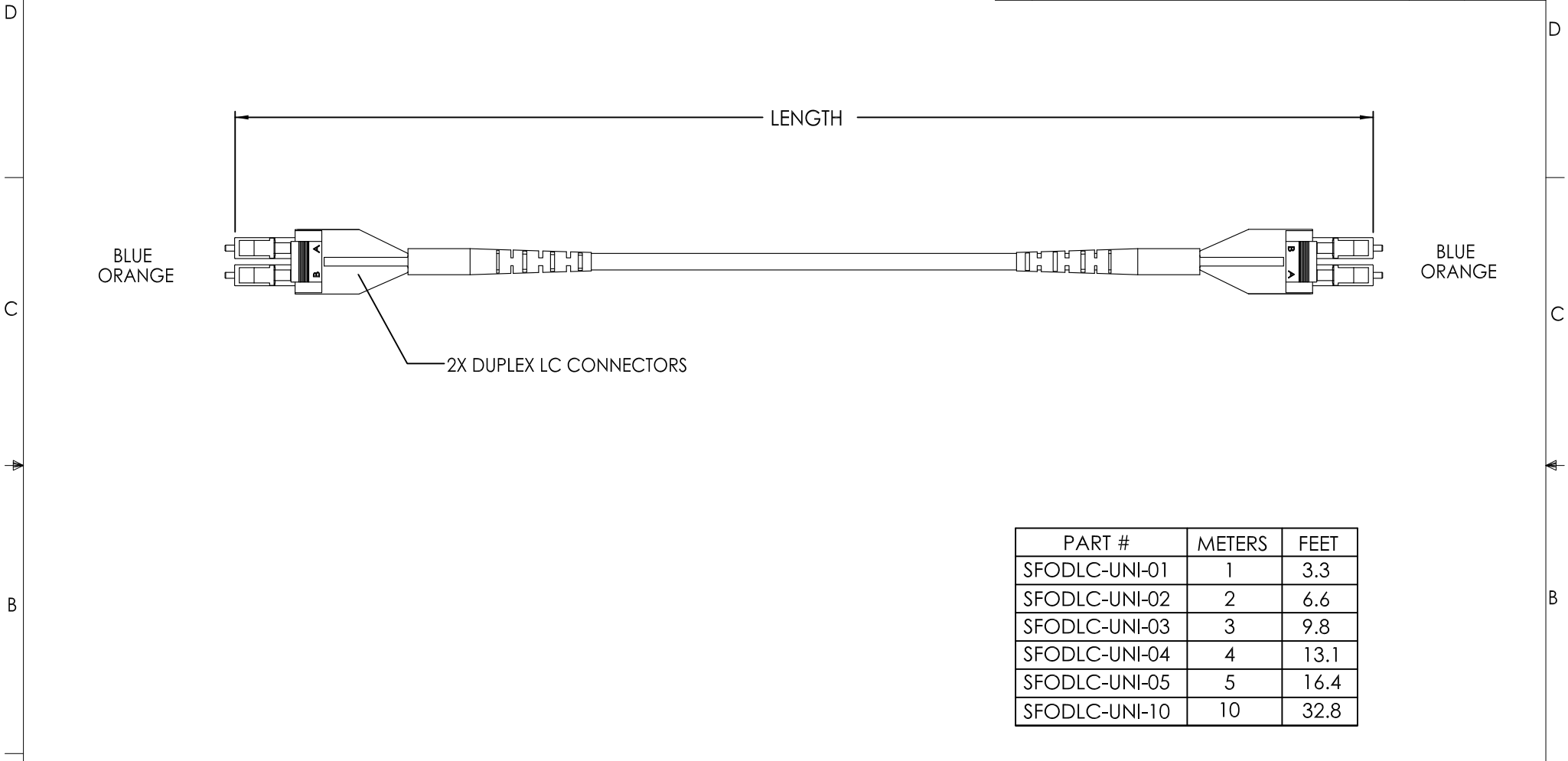


THE INFORMATION CONTAINED IN THIS DRAWING IS THE SOLE PROPERTY OF L-COM, INC. ANY REPRODUCTION IN PART OR WHOLE WITHOUT THE WRITTEN PERMISSION OF L-COM, INC. IS PROHIBITED.

RoHS Compliant ✓

REVISIONS			
REV	DESCRIPTION	DATE	APPROVED
A	INITIAL RELEASE	05/17/07	D.FRISIELLO
A	ECN #99999: REVISED NOTES FOR SUB JACKET COLORS	1/23/09	D.FRISIELLO



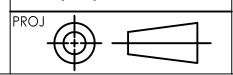
PART #	METERS	FEET
SFODLC-UNI-01	1	3.3
SFODLC-UNI-02	2	6.6
SFODLC-UNI-03	3	9.8
SFODLC-UNI-04	4	13.1
SFODLC-UNI-05	5	16.4
SFODLC-UNI-10	10	32.8

NOTES:

CABLE CHARACTERISTICS:
 9/125 DUPLEX FIBER (SINGLE JACKET)
 OFNR JACKET, COLOR: YELLOW
 SUB-CABLE JACKET COLORS: BLUE, ORANGE
 CABLE OD 3.0mm

MISCELLANEOUS:
 CABLE ASSEMBLY TO SHIP WITH DUST CAPS INSTALLED. (NOT SHOWN)
 CABLE ASSEMBLY TO SHIP INDIVIDUALLY IN A POLYBAG.

DIMENSIONS ARE IN INCHES [mm]	APPROVALS	DATE
UNLESS OTHERWISE SPECIFIED, TOLERANCES TO BE: .X ± .1 [2.5] ANGLES ± 2° .XX ± .01 [.25] .XXX ± .005 [.13] OVERALL CABLE LENGTH TOL: ≤60 [1524] +3 [76.2] / -0 >60 [1524] +5% / -0%	DRAWN BY	05/17/07
	CHECKED BY	05/17/07
	APPROVED BY	05/17/07
	P.McNEIL	



CONFIGURATION DETAILS OF UNDIMENSIONED FEATURES MAY VARY

L-com CONNECTIVITY PRODUCTS		45 BEECHWOOD DRIVE NORTH ANDOVER, MA 01845	
CATEGORY		FIBER	
PRODUCT DESCRIPTION		LC/LC 9/125 DUPLEX ASSEMBLY	
SIZE	FSCM NO.	DWG. NO.	REV.
A	43321	SFODLC-UNI	A
SCALE: NONE	CAD FILE: SFODLC-UNI.SLDDRW	SHEET 1 OF 1	