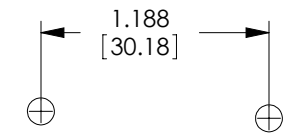
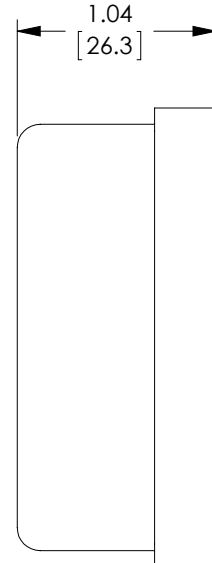
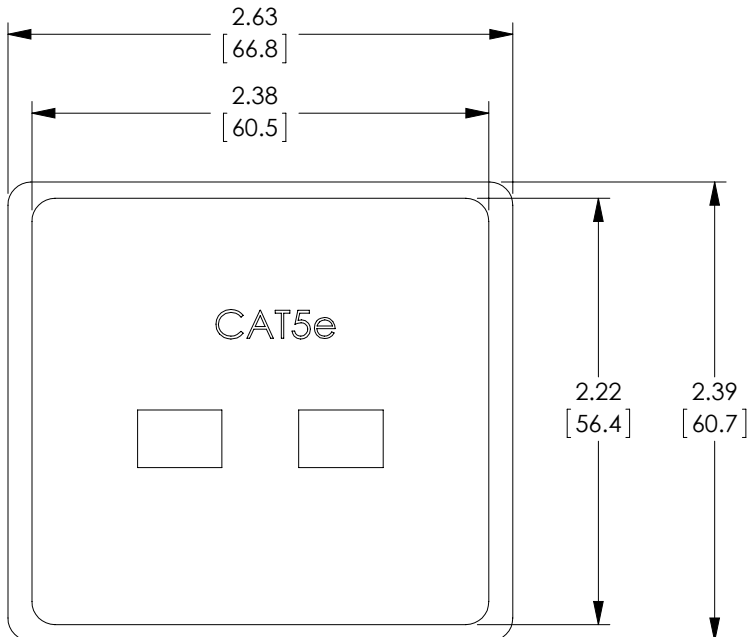
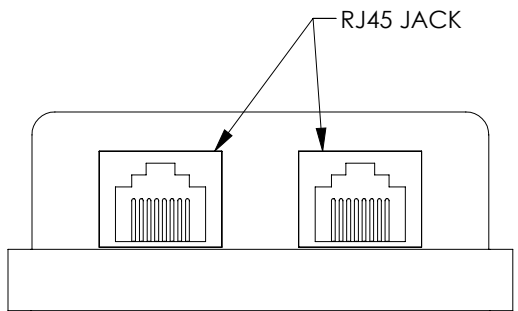


THE INFORMATION CONTAINED IN THIS DRAWING IS THE SOLE PROPERTY OF L-COM, INC. ANY REPRODUCTION IN PART OR WHOLE WITHOUT THE WRITTEN PERMISSION OF L-COM, INC. IS PROHIBITED.

REVISIONS			
REV	DESCRIPTION	DATE	APPROVED
A	INITIAL RELEASE	10/30/12	D.GRIFFIN



RECOMMENDED MOUNTING PATTERN



KIT INCLUDES:

- 1 DOUBLE SIDED SELF-ADHESIVE PAD
- 2 MOUNTING WOOD SCREWS

NOTES:

1. BASE AND COVER ARE HIGH IMPACT THERMOPLASTIC, COLOR: CHROME.
2. COVER SNAPS ON.
3. BOTH EIA568A AND B WIRING CODES ARE LISTED ON RJ45 JACKS INSIDE.
4. JACK CONTACTS HAVE 50μ GOLD PLATING.
5. ADAPTOR IS U.L. LISTED AND C.S.A. CERTIFIED.
6. ALL DIMENSIONS ARE FOR REFERENCE ONLY.
7. COMPONENT SHALL BE INDIVIDUALLY PACKAGED IN ACCORDANCE WITH L-COM SPECIFICATION PS-0031.

RoHS Compliant ✓

UNLESS OTHERWISE SPECIFIED, DIMENSIONS ARE IN INCHES [mm] OVERALL CABLE LENGTH TOLERANCE: ≤12 [305] = +1 [25] / -0 >12 [305] ≤60 [1524] = +2 [51] / -0 >60 [1524] ≤120 [3048] = +4 [102] / -0 >120 [3048] ≤300 [7620] = +6 [152] / -0 >300 [7620] = +3% / -0% ALL OTHER DIMENSIONAL TOLERANCES: .X = ±.2 .XX = ±.02 .XXX = ±.005	APPROVALS DRAWN BY D.FRISIELLO	DATE 10/26/12		45 BEECHWOOD DRIVE NORTH ANDOVER, MA 01845		
	CHECKED BY D.DESJARDIN	10/26/12		CATEGORY TELECOM/MODULAR		
PROJECTION 	CONFIGURATION DETAILS OF UNDIMENSIONED FEATURES MAY VARY	PRODUCT DESCRIPTION SRFC MNT BOX 2 C5E RJ45 SHLD	SIZE A	FSCM NO. 43321	DWG. NO. SMD110C5ED-S	REV. A
COLOR VARIATIONS MAY OCCUR			SCALE: NONE	CAD FILE: SMD110C5ED-S.SLDDRW	SHEET 1 OF 1	