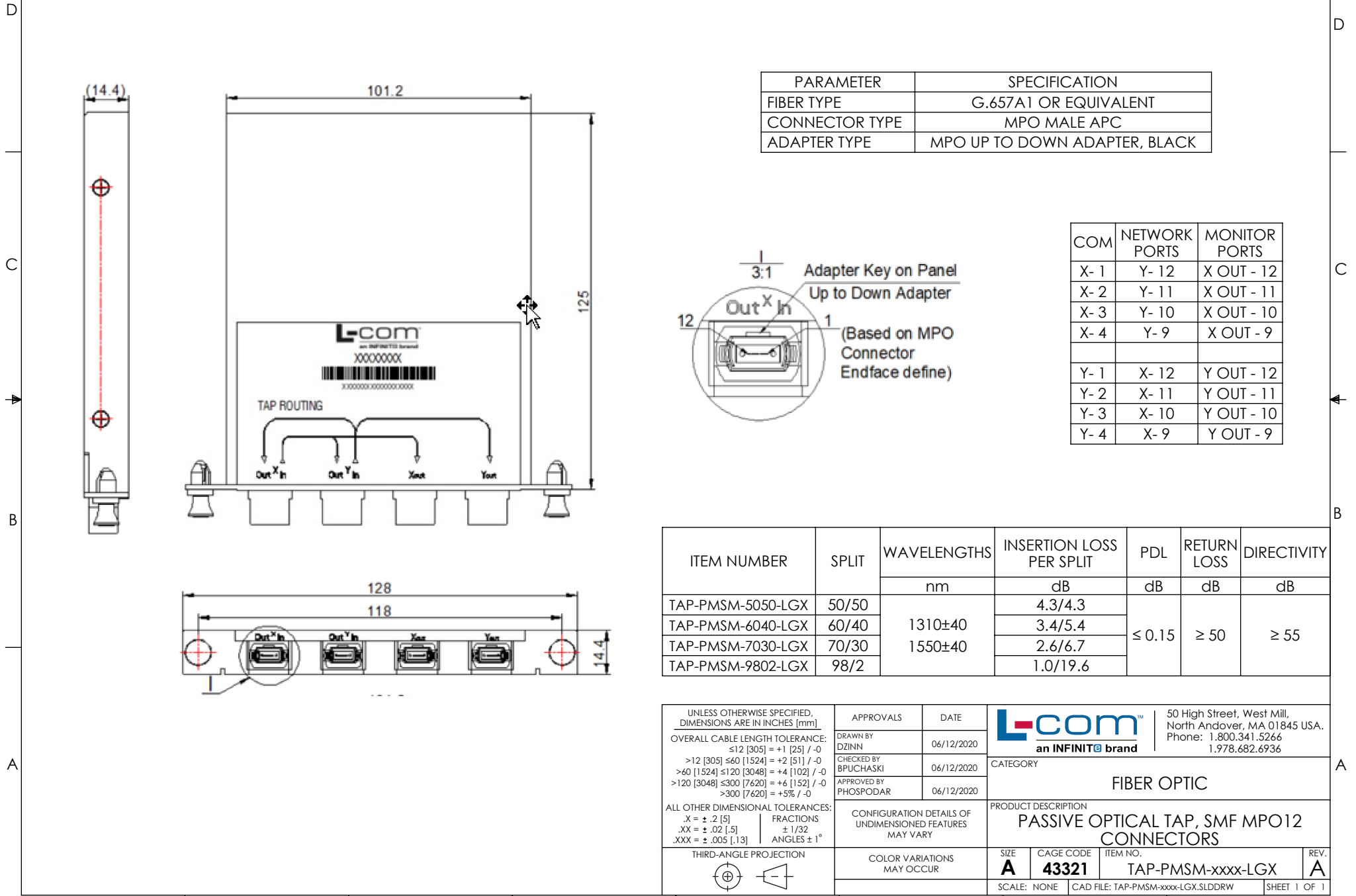


THE INFORMATION CONTAINED IN THIS DRAWING IS THE SOLE PROPERTY OF L-COM, INC. ANY REPRODUCTION IN PART OR WHOLE WITHOUT THE WRITTEN PERMISSION OF L-COM, INC. IS PROHIBITED.


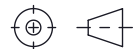
REVISIONS			
REV	DESCRIPTION	DATE	APPROVED
A	INITIAL RELEASE	06/12/2020	PHOSPODAR



PARAMETER	SPECIFICATION
FIBER TYPE	G.657A1 OR EQUIVALENT
CONNECTOR TYPE	MPO MALE APC
ADAPTER TYPE	MPO UP TO DOWN ADAPTER, BLACK

COM	NETWORK PORTS	MONITOR PORTS
X- 1	Y- 12	X OUT - 12
X- 2	Y- 11	X OUT - 11
X- 3	Y- 10	X OUT - 10
X- 4	Y- 9	X OUT - 9
Y- 1	X- 12	Y OUT - 12
Y- 2	X- 11	Y OUT - 11
Y- 3	X- 10	Y OUT - 10
Y- 4	X- 9	Y OUT - 9

ITEM NUMBER	SPLIT	WAVELENGTHS	INSERTION LOSS PER SPLIT	PDL	RETURN LOSS	DIRECTIVITY
		nm	dB	dB	dB	dB
TAP-PMSM-5050-LGX	50/50	1310±40	4.3/4.3	≤ 0.15	≥ 50	≥ 55
TAP-PMSM-6040-LGX	60/40		3.4/5.4			
TAP-PMSM-7030-LGX	70/30	1550±40	2.6/6.7			
TAP-PMSM-9802-LGX	98/2		1.0/19.6			

UNLESS OTHERWISE SPECIFIED, DIMENSIONS ARE IN INCHES [mm] OVERALL CABLE LENGTH TOLERANCE: ≤12 [305] = +1 [25] / -0 >12 [305] ≤60 [1524] = +2 [51] / -0 >60 [1524] ≤120 [3048] = +4 [102] / -0 >120 [3048] ≤300 [7620] = +6 [152] / -0 >300 [7620] = +5% / -0 ALL OTHER DIMENSIONAL TOLERANCES: .X = ± .2 [5]   FRACTIONS ± 1/32 .XX = ± .02 [5]   ANGLES ± 1° .XXX = ± .005 [1.3]	APPROVALS DRAWN BY: DZINN CHECKED BY: BPUCHASKI APPROVED BY: PHOSPODAR	DATE 06/12/2020 06/12/2020 06/12/2020	 50 High Street, West Mill, North Andover, MA 01845 USA. Phone: 1.800.341.5266 1.978.682.6936
	CONFIGURATION DETAILS OF UNDIMENSIONED FEATURES MAY VARY	CATEGORY <b>FIBER OPTIC</b>	
THIRD-ANGLE PROJECTION 	COLOR VARIATIONS MAY OCCUR	PRODUCT DESCRIPTION <b>PASSIVE OPTICAL TAP, SMF MPO12 CONNECTORS</b>	SCALE: NONE   CAD FILE: TAP-PMSM-xxxx-LGX.SLDDRW   SHEET 1 OF 1
SIZE <b>A</b>   CAGE CODE <b>43321</b>   ITEM NO. <b>TAP-PMSM-xxxx-LGX</b>   REV. <b>A</b>	PRODUCT DESCRIPTION <b>PASSIVE OPTICAL TAP, SMF MPO12 CONNECTORS</b>		