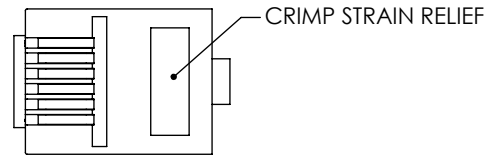
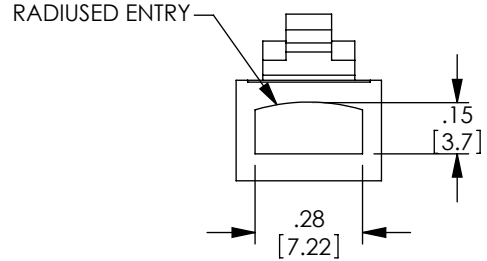
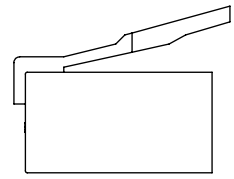
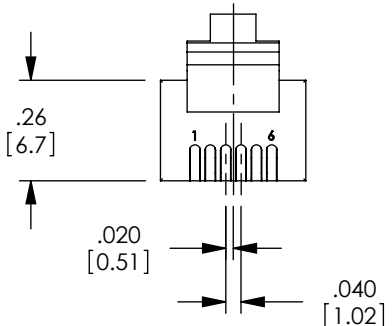
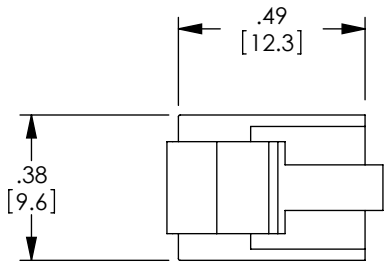


THE INFORMATION CONTAINED IN THIS DRAWING IS THE SOLE PROPERTY OF L-COM, INC. ANY REPRODUCTION IN PART OR WHOLE WITHOUT THE WRITTEN PERMISSION OF L-COM, INC. IS PROHIBITED.

REVISIONS			
REV	DESCRIPTION	DATE	APPROVED
E	ECN 7398: ADDED BULK PACKAGING, REVISED ALL NOTES, FORMAT, ROHS	4/22/14	D.FRISIELLO
F	ECN 7747: UPDATED TO MATCH NEW SUPPLIER SPEC	1/19/15	D. CASTRO



*CONTACTS SHOWN CRIMPED



NOTES:

MATERIAL:

HOUSING: UL94V-0 COMPLIANT POLYCARBONATE
 PLUG SHALL CONFORM TO TIA-1096.
 CONTACTS: COPPER ALLOY
 CONTACT PLATING: 50μINCHES GOLD OVER
 100 μINCHES NICKEL.

ELECTRICAL:

CURRENT RATING: 2A (MAX)
 VOLTAGE RATING: 250 VAC (MAX)
 INSULATION RESISTANCE: 100MOHMS
 DIELECTRIC WITHSTANDING VOLTAGE: 1000 VOLTS AC (MIN)

MECHANICAL:

CONDUCTOR ACCEPTANCE: 24 TO 26AWG
 CABLE TO PLUG TENSILE STRENGTH: 20 POUND MIN.
 MAXIMUM CONDUCTOR OD: .040"
 CONDUCTOR TYPE: STRANDED
 CONTACT STYLE: TWO PRONG

ENVIRONMENTAL:

OPERATING TEMPERATURE RANGE -40°C TO +85°C.

MISCELLANEOUS:

ALL DIMENSIONS ARE FOR REFERENCE ONLY.
 COMPONENT SHALL BE PACKAGED IN BULK OF 100 PIECES.

REFERENCE THE FOLLOWING DOCUMENTS:

TERMINATION INSTRUCTIONS LTI-015 (ROUND CABLE)
 TERMINATION INSTRUCTIONS LTI-016 (FLAT CABLE)
 TOOLING INFORMATION LCT-002
 LCT-003 (PROPRIETARY)

REGULATORY COMPLIANCE:

CE2011/65/EU(ROHS DIRECTIVE)

UNLESS OTHERWISE SPECIFIED, DIMENSIONS ARE IN INCHES [mm] OVERALL CABLE LENGTH TOLERANCE: ≤12 [305] = +1 [25] / -0 >12 [305] ≤60 [1524] = +2 [51] / -0 >60 [1524] ≤120 [3048] = +4 [102] / -0 >120 [3048] ≤300 [7620] = +6 [152] / -0 >300 [7620] = +5% / -0%	APPROVALS	DATE		45 BEECHWOOD DRIVE NORTH ANDOVER, MA 01845
	DRAWN BY D. PARHAM	3/27/2002		
ALL OTHER DIMENSIONAL TOLERANCES: .X = ± .2 [5.08] .XX = ± .02 [51] .XXX = ±.005 [1.3]	CHECKED BY T. CLARK	3/28/2002	CATEGORY TELECOM/MODULAR	
	APPROVED BY C. McCORMICK	3/28/2002	PRODUCT DESCRIPTION RJ12 (6X6) MODULAR PLUG RND ENTRY	
PROJECTION 	CONFIGURATION DETAILS OF UNDIMENSIONED FEATURES MAY VARY	COLOR VARIATIONS MAY OCCUR	SIZE A	FSCM NO. 43321
			DWG. NO. TDR6P6C	REV. F
	1AD02-007		SCALE: NONE	CAD FILE: TDR6P6C.SLDDRW
				SHEET 1 OF 1