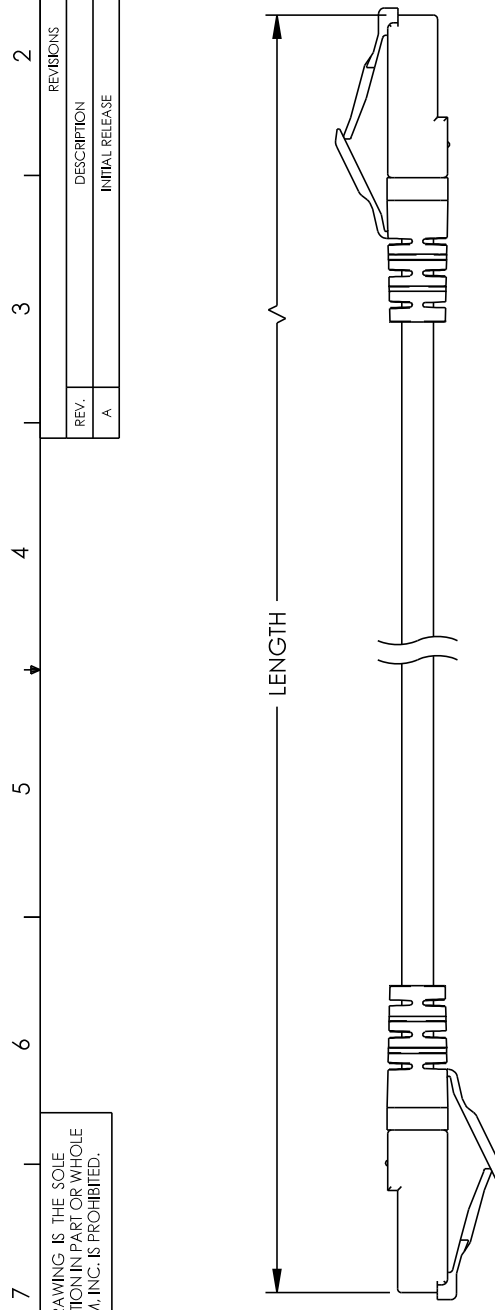


THE INFORMATION CONTAINED IN THIS DRAWING IS THE SOLE PROPERTY OF L-COM, INC. ANY REPRODUCTION IN PART OR WHOLE WITHOUT THE WRITTEN PERMISSION OF L-COM, INC. IS PROHIBITED.

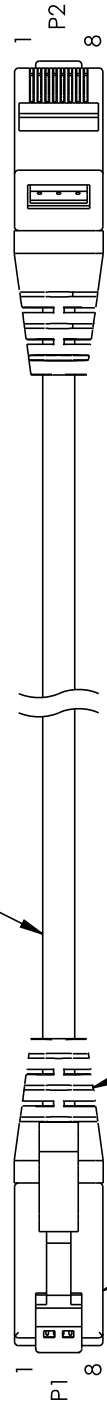
REV.	DESCRIPTION	DATE	APPROVED
A	INITIAL RELEASE	12/16/2022	DGUITTADAURO

REVISIONS			

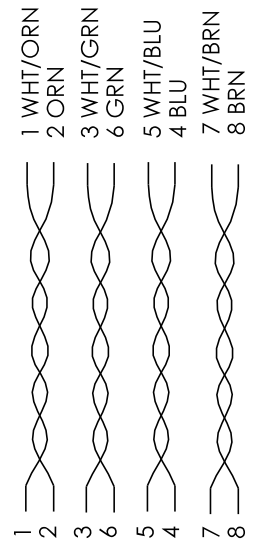
1 2 3 4 5 6 7 8



U/UTP, 26 AWG STRANDED BARE COPPER,
CAT. 6, CM PVC



WIRING MAP



NOTES:

- CABLE ASSEMBLIES INDIVIDUALLY PACKAGED IN A POLYBAG PER L-COM SPECIFICATION PS-0031.
- CABLE ASSEMBLIES TO BE TESTED FOR CONTINUITY.
- PLUG ORIENTATION FOR REFERENCE ONLY.

REGULATORY COMPLIANCE:

EU ROHS DIRECTIVE (MOST RECENT RELEASED VERSION)

UNLESS OTHERWISE SPECIFIED, DIMENSIONS ARE IN INCHES (mm)		APPROVALS	DATE
OVERALL CABLE LENGTH TOLERANCE:		DRAWN BY HBAKKE	12/15/2022
>12 [305] ≤40 [1524] = +1 [25] / -0		CHECKED BY DMAY	12/16/2022
>40 [1524] ≤120 [3048] = +4 [102] / -0		APPROVED BY DGUST	12/16/2022
>120 [3048] ≤300 [7620] = +6 [152] / -0			
>300 [7620] = +5% / +0			
ALL OTHER DIMENSIONAL TOLERANCES: .X = ±.015 FRACTIONS .XX = ±.002 [5] ANGLES ± 1° .XXX = ±.005 [1.3]		CONFIGURATION DETAILS OF UNDIMENSIONED FEATURES MAY VARY	
THIRD-ANGLE PROJECTION		COLOR VARIATIONS MAY OCCUR	

 an INFINITO brand		50 High Street, West Mill, North Andover, MA 01845 USA. Phone: 1.800.341.5266 1.978.682.6936	
CATEGORY		TELECOM/MODULAR	
PRODUCT DESCRIPTION Category 6, Gigabit TAA Compliant Ethernet RJ45 to RJ45 Cable Assembly, 26AWG Stranded, UTP Unshielded, CM PVC			
SIZE	CAGE CODE	ITEM NO.	REV.
A	43321	TRD626TAA	A
SCALE: NONE		CAD FILE: TRD626TAA.SLDRW	

THE INFORMATION CONTAINED IN THIS DRAWING IS THE SOLE PROPERTY OF L-COM, INC. ANY REPRODUCTION IN PART OR WHOLE WITHOUT THE WRITTEN PERMISSION OF L-COM, INC. IS PROHIBITED.

PART NUMBER/COLOR/LENGTH TABLE

PART NUMBER	COLOR	LENGTH FEET [METERS]	LENGTH TOLERANCE FEET [METERS]
TRD626TAA-BLK-3F	BLACK	3.0 [.91]	+ .2/-0 [+ .06/-0]
TRD626TAA-BLK-5F	BLACK	5.0 [1.52]	+ .2/-0 [+ .06/-0]
TRD626TAA-BLK-7F	BLACK	7.0 [2.13]	+ .2/-0 [+ .06/-0]
TRD626TAA-BLK-10F	BLACK	10.0 [3.05]	+ .4/-0 [+ .12/-0]
TRD626TAA-BLK-15F	BLACK	15.0 [4.57]	+ .4/-0 [+ .12/-0]
TRD626TAA-BLK-25F	BLACK	25.0 [7.62]	+ .4/-0 [+ .12/-0]
TRD626TAA-BLK-50F	BLACK	50.0 [15.24]	+ .4/-0 [+ .12/-0]
TRD626TAA-BLK-75F	BLACK	75.0 [22.86]	+ .4/-0 [+ .12/-0]
TRD626TAA-BLU-3F	BLUE	3.0 [.91]	+ .2/-0 [+ .06/-0]
TRD626TAA-BLU-5F	BLUE	5.0 [1.52]	+ .2/-0 [+ .06/-0]
TRD626TAA-BLU-7F	BLUE	7.0 [2.13]	+ .2/-0 [+ .06/-0]
TRD626TAA-BLU-10F	BLUE	10.0 [3.05]	+ .4/-0 [+ .12/-0]
TRD626TAA-BLU-15F	BLUE	15.0 [4.57]	+ .4/-0 [+ .12/-0]
TRD626TAA-BLU-25F	BLUE	25.0 [7.62]	+ .4/-0 [+ .12/-0]
TRD626TAA-BLU-50F	BLUE	50.0 [15.24]	+ .4/-0 [+ .12/-0]
TRD626TAA-BLU-75F	BLUE	75.0 [22.86]	+ .4/-0 [+ .12/-0]
TRD626TAA-GRN-3F	GREEN	3.0 [.91]	+ .2/-0 [+ .06/-0]
TRD626TAA-GRN-5F	GREEN	5.0 [1.52]	+ .2/-0 [+ .06/-0]
TRD626TAA-GRN-7F	GREEN	7.0 [2.13]	+ .2/-0 [+ .06/-0]
TRD626TAA-GRN-10F	GREEN	10.0 [3.05]	+ .4/-0 [+ .12/-0]
TRD626TAA-GRN-15F	GREEN	15.0 [4.57]	+ .4/-0 [+ .12/-0]
TRD626TAA-GRN-25F	GREEN	25.0 [7.62]	+ .4/-0 [+ .12/-0]
TRD626TAA-GRN-50F	GREEN	50.0 [15.24]	+ .4/-0 [+ .12/-0]
TRD626TAA-GRN-75F	GREEN	75.0 [22.86]	+ .4/-0 [+ .12/-0]
TRD626TAA-YLW-3F	YELLOW	3.0 [.91]	+ .2/-0 [+ .06/-0]
TRD626TAA-YLW-5F	YELLOW	5.0 [1.52]	+ .2/-0 [+ .06/-0]
TRD626TAA-YLW-7F	YELLOW	7.0 [2.13]	+ .2/-0 [+ .06/-0]
TRD626TAA-YLW-10F	YELLOW	10.0 [3.05]	+ .4/-0 [+ .12/-0]
TRD626TAA-YLW-15F	YELLOW	15.0 [4.57]	+ .4/-0 [+ .12/-0]
TRD626TAA-YLW-25F	YELLOW	25.0 [7.62]	+ .4/-0 [+ .12/-0]
TRD626TAA-YLW-50F	YELLOW	50.0 [15.24]	+ .4/-0 [+ .12/-0]
TRD626TAA-YLW-75F	YELLOW	75.0 [22.86]	+ .4/-0 [+ .12/-0]



50 High Street, West Mill,
North Andover, MA 01845 USA.
Phone: 1.800.341.5266
1.978.682.6936

CATEGORY

TELECOM/MODULAR

PRODUCT DESCRIPTION

Category: 6, Gigabit TAA, Compliant Ethernet RJ45 to RJ45 Cable Assembly, 26AWG, Stranded, UTP, Unshielded, CM PVC

SIZE	CAGE CODE	ITEM NO.	REV.
A	43321	TRD626TAA	A
SCALE: NONE	CAD FILE: TRD626TAA.SLDRW	SHEET 2 OF 2	