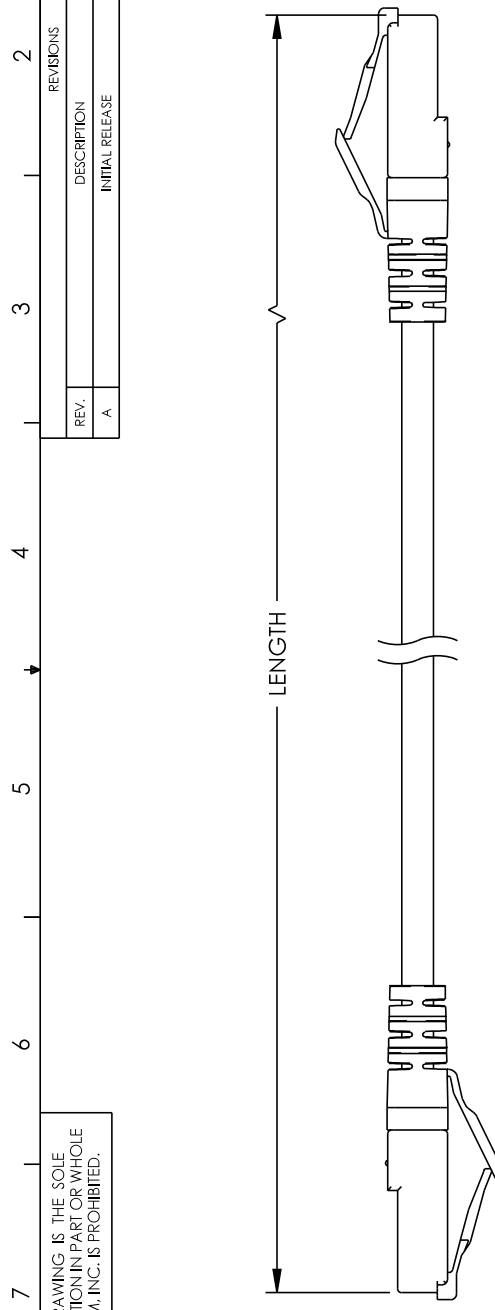


THE INFORMATION CONTAINED IN THIS DRAWING IS THE SOLE PROPERTY OF L-COM, INC. ANY REPRODUCTION IN PART OR WHOLE WITHOUT THE WRITTEN PERMISSION OF L-COM, INC. IS PROHIBITED.

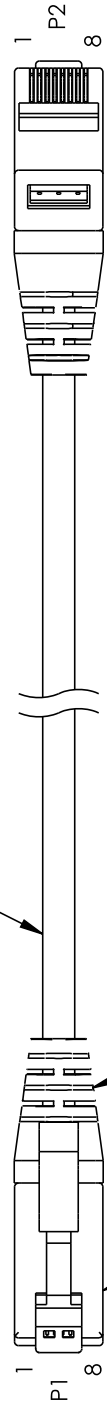
| REV. | DESCRIPTION | DATE | APPROVED |
|------|-----------------|------------|--------------|
| A | INITIAL RELEASE | 12/16/2022 | DGUITTADAURO |

| REVISIONS | | | |
|-----------|--|--|--|
| | | | |

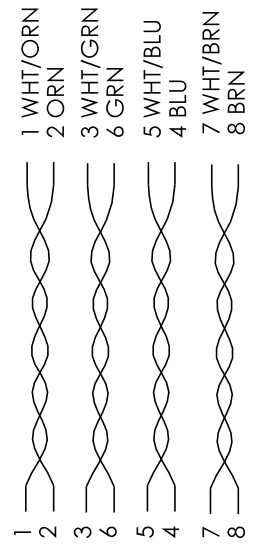
1 2 3 4 5 6 7 8



U/UTP, 26 AWG STRANDED BARE COPPER,
CAT. 6, CM PVC



WIRING MAP



NOTES:

- CABLE ASSEMBLIES INDIVIDUALLY PACKAGED IN A POLYBAG PER L-COM SPECIFICATION PS-0031.
- CABLE ASSEMBLIES TO BE TESTED FOR CONTINUITY.
- PLUG ORIENTATION FOR REFERENCE ONLY.

REGULATORY COMPLIANCE:

EU ROHS DIRECTIVE (MOST RECENT RELEASED VERSION)

| | | | |
|--|--|----------------------|------------|
| UNLESS OTHERWISE SPECIFIED, DIMENSIONS ARE IN INCHES (mm) | | APPROVALS | DATE |
| OVERALL CABLE LENGTH TOLERANCE: | | DRAWN BY HBAKKE | 12/15/2022 |
| >12 [305] ≤40 [1524] = +1 [25] / -0 | | CHECKED BY DMAY | 12/16/2022 |
| >40 [1524] ≤120 [3048] = +4 [102] / -0 | | APPROVED BY DGUST | 12/16/2022 |
| >120 [3048] ≤300 [7620] = +6 [152] / -0 | | | |
| >300 [7620] = +5% / +0 | | | |
| ALL OTHER DIMENSIONAL TOLERANCES: .X = ±.2 [5] FRACTIONS .XX = ±.02 [1.5] .XXX = ±.005 [1.3] ANGLES ±1° | | | |
| THIRD-ANGLE PROJECTION | | | |

| | | | |
|--|-----------|---|------|
| an INFINITO brand | | 50 High Street, West Mill, North Andover, MA 01845 USA. Phone: 1.800.341.5266 1.978.682.6936 | |
| CATEGORY | | TELECOM/MODULAR | |
| PRODUCT DESCRIPTION | | | |
| Category 6, Gigabit TAA Compliant Ethernet RJ45 to RJ45 Cable Assembly, 26AWG Stranded, UTP Unshielded, CM PVC | | | |
| SIZE | CAGE CODE | ITEM NO. | REV. |
| A | 43321 | TRD626TAA | A |
| SCALE: NONE | | CAD FILE: TRD626TAA.SLDRW | |

1 2 3 4 5 6 7 8

THE INFORMATION CONTAINED IN THIS DRAWING IS THE SOLE PROPERTY OF L-COM, INC. ANY REPRODUCTION IN PART OR WHOLE WITHOUT THE WRITTEN PERMISSION OF L-COM, INC. IS PROHIBITED.

PART NUMBER/COLOR/LENGTH TABLE

| PART NUMBER | COLOR | LENGTH FEET [METERS] | LENGTH TOLERANCE FEET [METERS] |
|-------------------|--------|----------------------|--------------------------------|
| TRD626TAA-BLK-3F | BLACK | 3.0 [.91] | + .2/-0 [+ .06/-0] |
| TRD626TAA-BLK-5F | BLACK | 5.0 [1.52] | + .2/-0 [+ .06/-0] |
| TRD626TAA-BLK-7F | BLACK | 7.0 [2.13] | + .2/-0 [+ .06/-0] |
| TRD626TAA-BLK-10F | BLACK | 10.0 [3.05] | + .4/-0 [+ .12/-0] |
| TRD626TAA-BLK-15F | BLACK | 15.0 [4.57] | + .4/-0 [+ .12/-0] |
| TRD626TAA-BLK-25F | BLACK | 25.0 [7.62] | + .4/-0 [+ .12/-0] |
| TRD626TAA-BLK-50F | BLACK | 50.0 [15.24] | + .4/-0 [+ .12/-0] |
| TRD626TAA-BLK-75F | BLACK | 75.0 [22.86] | + .4/-0 [+ .12/-0] |
| TRD626TAA-BLU-3F | BLUE | 3.0 [.91] | + .2/-0 [+ .06/-0] |
| TRD626TAA-BLU-5F | BLUE | 5.0 [1.52] | + .2/-0 [+ .06/-0] |
| TRD626TAA-BLU-7F | BLUE | 7.0 [2.13] | + .2/-0 [+ .06/-0] |
| TRD626TAA-BLU-10F | BLUE | 10.0 [3.05] | + .4/-0 [+ .12/-0] |
| TRD626TAA-BLU-15F | BLUE | 15.0 [4.57] | + .4/-0 [+ .12/-0] |
| TRD626TAA-BLU-25F | BLUE | 25.0 [7.62] | + .4/-0 [+ .12/-0] |
| TRD626TAA-BLU-50F | BLUE | 50.0 [15.24] | + .4/-0 [+ .12/-0] |
| TRD626TAA-BLU-75F | BLUE | 75.0 [22.86] | + .4/-0 [+ .12/-0] |
| TRD626TAA-GRN-3F | GREEN | 3.0 [.91] | + .2/-0 [+ .06/-0] |
| TRD626TAA-GRN-5F | GREEN | 5.0 [1.52] | + .2/-0 [+ .06/-0] |
| TRD626TAA-GRN-7F | GREEN | 7.0 [2.13] | + .2/-0 [+ .06/-0] |
| TRD626TAA-GRN-10F | GREEN | 10.0 [3.05] | + .4/-0 [+ .12/-0] |
| TRD626TAA-GRN-15F | GREEN | 15.0 [4.57] | + .4/-0 [+ .12/-0] |
| TRD626TAA-GRN-25F | GREEN | 25.0 [7.62] | + .4/-0 [+ .12/-0] |
| TRD626TAA-GRN-50F | GREEN | 50.0 [15.24] | + .4/-0 [+ .12/-0] |
| TRD626TAA-GRN-75F | GREEN | 75.0 [22.86] | + .4/-0 [+ .12/-0] |
| TRD626TAA-YLW-3F | YELLOW | 3.0 [.91] | + .2/-0 [+ .06/-0] |
| TRD626TAA-YLW-5F | YELLOW | 5.0 [1.52] | + .2/-0 [+ .06/-0] |
| TRD626TAA-YLW-7F | YELLOW | 7.0 [2.13] | + .2/-0 [+ .06/-0] |
| TRD626TAA-YLW-10F | YELLOW | 10.0 [3.05] | + .4/-0 [+ .12/-0] |
| TRD626TAA-YLW-15F | YELLOW | 15.0 [4.57] | + .4/-0 [+ .12/-0] |
| TRD626TAA-YLW-25F | YELLOW | 25.0 [7.62] | + .4/-0 [+ .12/-0] |
| TRD626TAA-YLW-50F | YELLOW | 50.0 [15.24] | + .4/-0 [+ .12/-0] |
| TRD626TAA-YLW-75F | YELLOW | 75.0 [22.86] | + .4/-0 [+ .12/-0] |



50 High Street, West Mill,
North Andover, MA 01845 USA.
Phone: 1.800.341.5266
1.978.682.6936

CATEGORY

TELECOM/MODULAR

PRODUCT DESCRIPTION

Category 6 Gigabit TAA Compliant Ethernet RJ45 to RJ45 Cable Assembly, 26AWG Stranded, UTP Unshielded, CM PVC

| | | | |
|-------------|---------------------------|--------------|------|
| SIZE | CAGE CODE | ITEM NO. | REV. |
| A | 43321 | TRD626TAA | A |
| SCALE: NONE | CAD FILE: TRD626TAA.SLDRW | SHEET 2 OF 2 | |