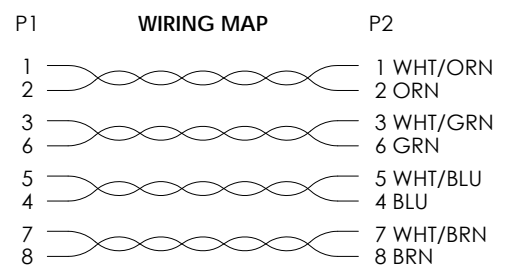
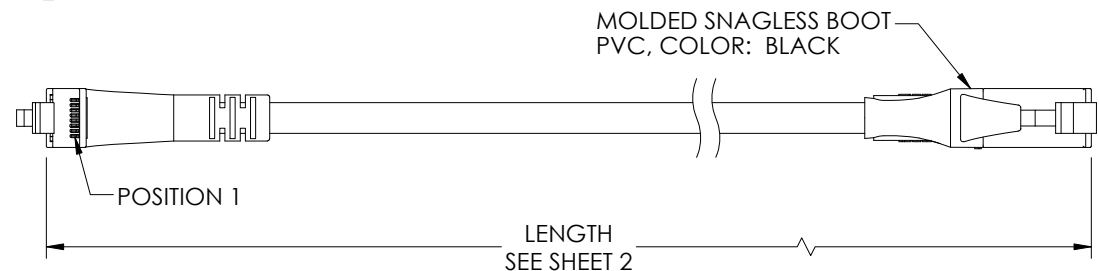
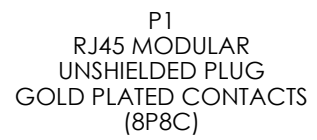
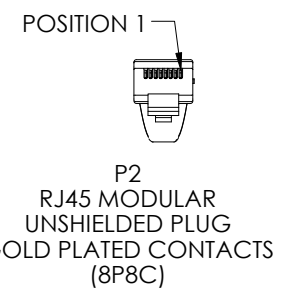
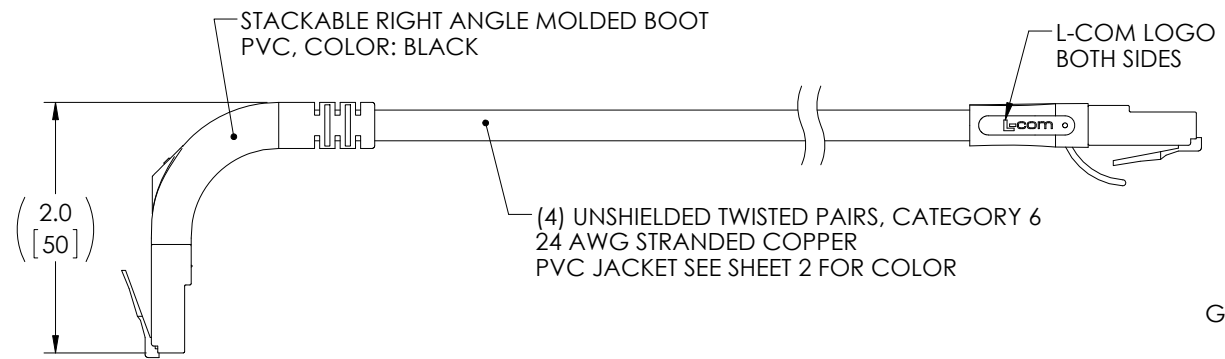
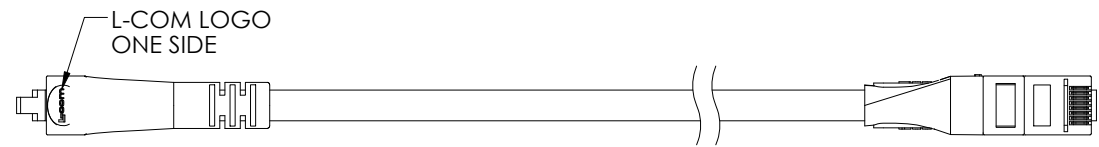
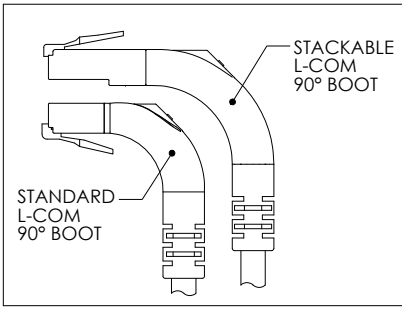


THE INFORMATION CONTAINED IN THIS DRAWING IS THE SOLE PROPERTY OF L-COM, INC. ANY REPRODUCTION IN PART OR WHOLE WITHOUT THE WRITTEN PERMISSION OF L-COM, INC. IS PROHIBITED.

REVISIONS			
REV	DESCRIPTION	DATE	APPROVED
A	INITIAL RELEASE	7/9/14	D.GRIFFIN
B	ECN 7667: REVISED DESCRIPTIONS OF "P1" AND "P2"	11/13/14	D.FRISIELLO




- NOTES:**
1. PLUG CONFORMS TO TIA-1096.
 2. CABLE ASSEMBLY SHALL BE TESTED FOR CONTINUITY.
 3. CABLE ASSEMBLY SHALL BE INDIVIDUALLY PACKAGED IN ACCORDANCE WITH L-COM PACKAGING SPECIFICATION PS-0031.

REGULATORY COMPLIANCE:
CE2011/65/EU(RoHS DIRECTIVE)

UNLESS OTHERWISE SPECIFIED, DIMENSIONS ARE IN INCHES [mm] OVERALL CABLE LENGTH TOLERANCE: ≤12 [305] = +1 [25] / -0 >12 [305] ≤60 [1524] = +2 [51] / -0 >60 [1524] ≤120 [3048] = +4 [102] / -0 >120 [3048] ≤300 [7620] = +6 [152] / -0 >300 [7620] = +5% / -0%	APPROVALS	DATE		45 BEECHWOOD DRIVE NORTH ANDOVER, MA 01845
	DRAWN BY D. DESJARDIN	10/17/13		
ALL OTHER DIMENSIONAL TOLERANCES: .X = ±.2 [5.08] .XX = ±.02 [1.51] .XXX = ±.005 [1.13]	CHECKED BY D. FRISIELLO	7/8/14	CATEGORY TELECOM/MODULAR	
	APPROVED BY D. GALLAGHER	7/8/14	PRODUCT DESCRIPTION C6 PVC UTP STAK-UP	
PROJECTION 	CONFIGURATION DETAILS OF UNDIMENSIONED FEATURES MAY VARY		SIZE A	FSCM NO. 43321
	COLOR VARIATIONS MAY OCCUR		DWG. NO. TRD695RA15	REV. B
			SCALE: NONE	CAD FILE: TRD695RA15.SLDDRW
			SHEET 1 OF 2	

THE INFORMATION CONTAINED IN THIS DRAWING IS THE SOLE PROPERTY OF L-COM, INC. ANY REPRODUCTION IN PART OR WHOLE WITHOUT THE WRITTEN PERMISSION OF L-COM, INC. IS PROHIBITED.

PART NUMBER	COLOR	LENGTH FEET [METERS]	PART NUMBER	COLOR	LENGTH FEET [METERS]
TRD695RA15BLK-1	BLACK	1.0 [0.30]	TRD695RA15RED-1	RED	1.0 [0.30]
TRD695RA15BLK-3	BLACK	3.0 [0.91]	TRD695RA15RED-3	RED	3.0 [0.91]
TRD695RA15BLK-5	BLACK	5.0 [1.52]	TRD695RA15RED-5	RED	5.0 [1.52]
TRD695RA15BLK-7	BLACK	7.0 [2.13]	TRD695RA15RED-7	RED	7.0 [2.13]
TRD695RA15BLK-10	BLACK	10.0 [3.05]	TRD695RA15RED-10	RED	10.0 [3.05]
TRD695RA15BLU-1	BLUE	1.0 [0.30]	TRD695RA15GRY-1	GRAY	1.0 [0.30]
TRD695RA15BLU-3	BLUE	3.0 [0.91]	TRD695RA15GRY-3	GRAY	3.0 [0.91]
TRD695RA15BLU-5	BLUE	5.0 [1.52]	TRD695RA15GRY-5	GRAY	5.0 [1.52]
TRD695RA15BLU-7	BLUE	7.0 [2.13]	TRD695RA15GRY-7	GRAY	7.0 [2.13]
TRD695RA15BLU-10	BLUE	10.0 [3.05]	TRD695RA15GRY-10	GRAY	10.0 [3.05]

		45 BEECHWOOD DRIVE NORTH ANDOVER, MA 01845	
CATEGORY TELECOM/MODULAR			
PRODUCT DESCRIPTION C6 PVC UTP STAK-UP			
SIZE A	FSCM NO. 43321	DWG. NO. TRD695RA15	REV. B
SCALE: NONE		CAD FILE: TRD695RA15.SLDDRW	SHEET 2 OF 2