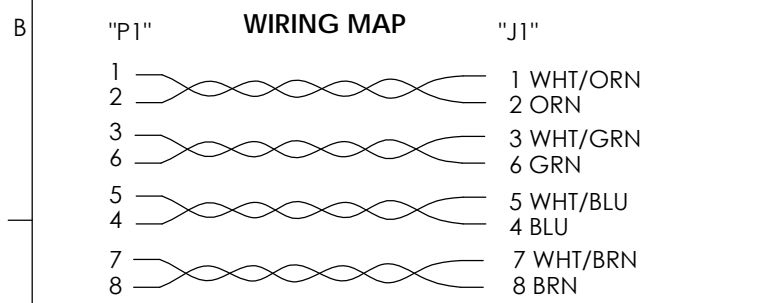
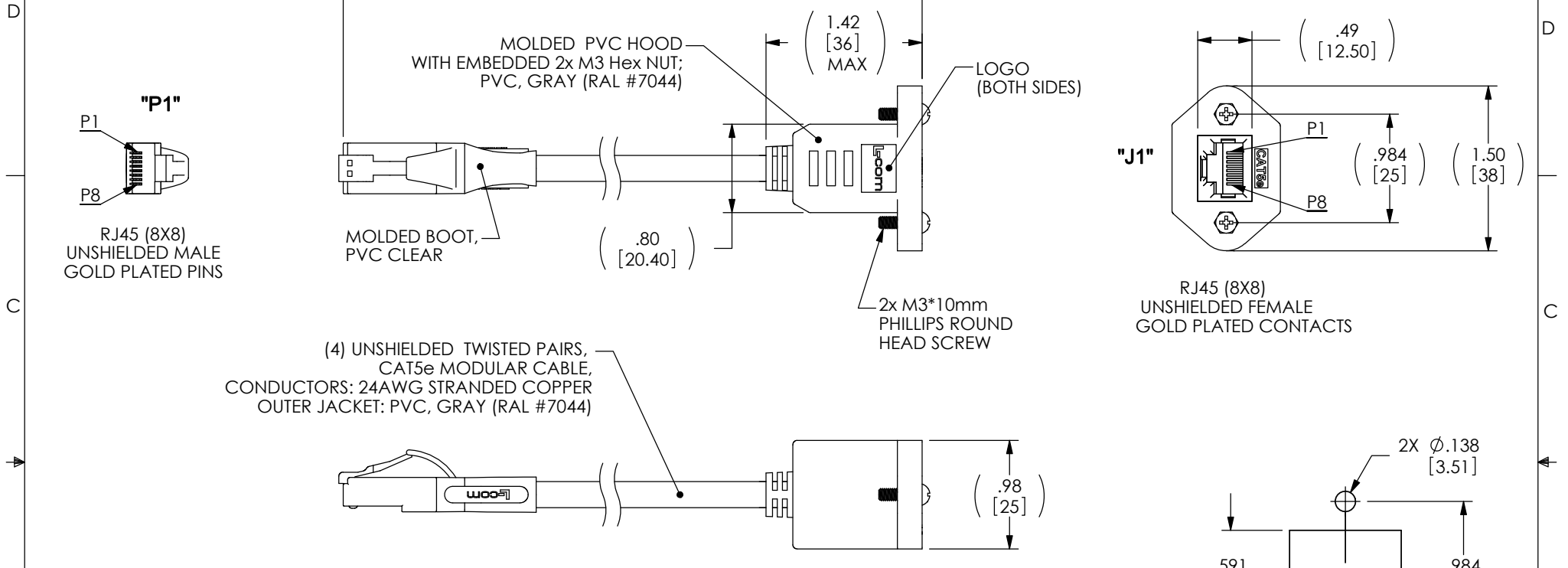


THE INFORMATION CONTAINED IN THIS DRAWING IS THE SOLE PROPERTY OF L-COM, INC. ANY REPRODUCTION IN PART OR WHOLE WITHOUT THE WRITTEN PERMISSION OF L-COM, INC. IS PROHIBITED.

RoHS Compliant ✓

REVISIONS			
REV	DESCRIPTION	DATE	APPROVED
A	INITIAL RELEASE	2/1/11	D.GRIFFIN
-	-	-	-



PART NUMBER	LENGTH	
	FEET	[METERS]
TRDC5EXTF-3	3.0	[.91]
TRDC5EXTF-5	5.0	[1.52]
TRDC5EXTF-7	7.0	[2.13]
TRDC5EXTF-10	10.0	[3.05]
TRDC5EXTF-15	15.0	[4.57]
TRDC5EXTF-25	25.0	[7.62]

RECOMMENDED PANEL CUTOUT

- NOTES:**
1. MODULAR CONNECTOR TO MEET TIA-1096.
 2. CABLE ASSEMBLY TO BE SHIPPED WITH (2) M3 X 10mm LONG PHILLIPS ROUND HEAD SCREWS
 3. CABLE ASSEMBLY SHALL BE TESTED FOR CONTINUITY.
 4. CABLE ASSEMBLY SHALL BE INDIVIDUALLY PACKAGED IN ACCORDANCE WITH L-COM SPEC. PS-0031.

UNLESS OTHERWISE SPECIFIED, DIMENSIONS ARE IN INCHES [mm] OVERALL CABLE LENGTH TOLERANCE: ≤12 [305] = +1 [25] / -0 >12 [305] ≤60 [1524] = +2 [51] / -0 >60 [1524] ≤120 [3048] = +4 [102] / -0 >120 [3048] ≤300 [7620] = +6 [152] / -0 >300 [7620] = +5% / -0%	APPROVALS	DATE	 45 BEECHWOOD DRIVE NORTH ANDOVER, MA 01845				
	DRAWN BY D. CASTRO	1/24/11		CATEGORY TELECOM/MODULAR			
ALL OTHER DIMENSIONAL TOLERANCES: .X = ±.2 .XX = ±.02 .XXX = ±.005	CHECKED BY D. PARHAM	1/26/11	PRODUCT DESCRIPTION CA C5E RJ45 M/F UTP FLANGED EXTENSION				
PROJECTION 	APPROVED BY D. GALLAGHER	1/31/11	<table border="0"> <tr> <td>SIZE A</td> <td>FSCM NO. 43321</td> <td>DWG. NO. TRDC5EXTF</td> <td>REV. A</td> </tr> </table>	SIZE A	FSCM NO. 43321	DWG. NO. TRDC5EXTF	REV. A
SIZE A	FSCM NO. 43321	DWG. NO. TRDC5EXTF	REV. A				
COLOR VARIATIONS MAY OCCUR	CONFIGURATION DETAILS OF UNDIMENSIONED FEATURES MAY VARY	SCALE: NONE	CAD FILE: TRDC5EXTF.SLDDRW				
REF	SHEET 1 OF 1						