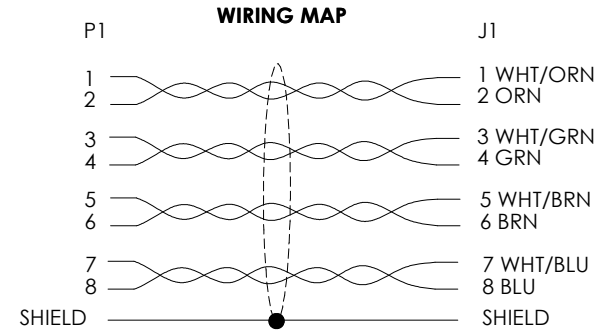
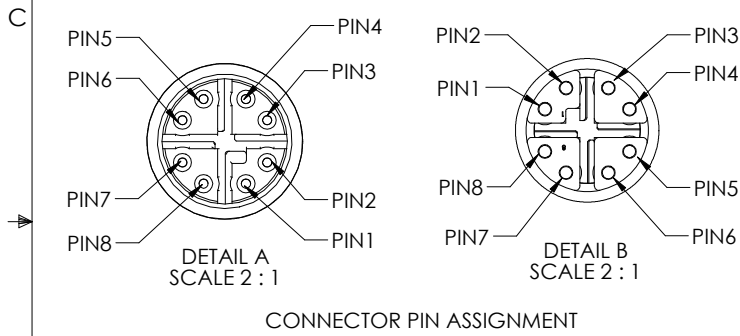
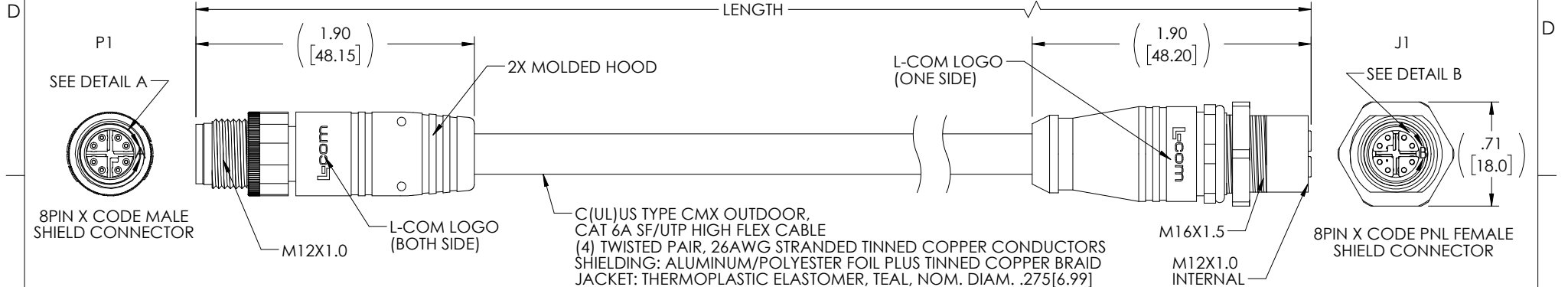


THE INFORMATION CONTAINED IN THIS DRAWING IS THE SOLE PROPERTY OF L-COM, INC. ANY REPRODUCTION IN PART OR WHOLE WITHOUT THE WRITTEN PERMISSION OF L-COM, INC. IS PROHIBITED.

REVISIONS			
REV	DESCRIPTION	DATE	APPROVED
A	INITIAL RELEASE	08/30/16	D.GRIFFIN
B	ECN 8810: CHANGED IP RATING TO IP67, MOLDED HOOD ADD FOUR LOCATION HOLES	06/08/17	DCUI
C	ECN 11467: ADD 15M LENGTH TO TABLE AND FLEX LIFE TO ENVIRONMENTAL NOTE	10/28/21	GUTTA DAURO



PART NUMBER	LENGTH	
	FEET	METERS
TRG626-T6T-05M	1.64	0.5
TRG626-T6T-1M	3.28	1.0
TRG626-T6T-2M	6.56	2.0
TRG626-T6T-3M	9.84	3.0
TRG626-T6T-5M	16.41	5.0
TRG626-T6T-10M	32.82	10.0
TRG626-T6T-15M	49.22	15.0

NOTES

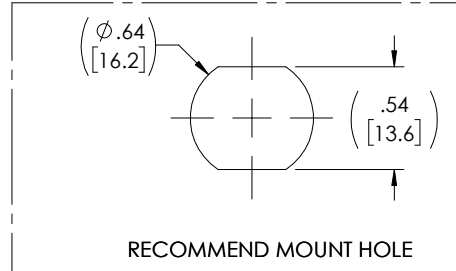
MATERIAL:
MOLDED HOOD: THERMOPLASTIC POLYURETHANE, BLACK
INSULATOR: NYLON, BLACK
SHELL/SCREW NUT: BRASS, NICKEL PLATE
CONTACTS: PHOSPHOR BRONZE, 15" MIN. GOLD PLATE
O-RING: VITON

ELECTRICAL:
NOMINAL VOLTAGE RATING: 48V AC/DC
MAX CURRENT: 0.5A

APPLICATION:
INGRESS PROTECTION RATING IS IP67(MATED)

ENVIRONMENTAL:
OPERATING TEMPERATURE RANGE: -40°C TO +75°C
CABLE JACKET RESISTANCE: OIL, SUNLIGHT, AND WELD SPLATTER RESISTANT
CABLE FLEX LIFE: 1 MILLION CYCLE TEST (10X CABLE OD)
10 MILLION CYCLE TEST (20X CABLE OD)

MISCELLANEOUS
CABLE ASSEMBLIES TO BE TESTED FOR CONTINUITY
WIRED TO IEC 61076-2-109 STANDARDS
CABLE ASSEMBLY SHALL BE INDIVIDUALLY PACKAGED IN ACCORDANCE WITH L-COM SPECIFICATION PS-0031.



UNLESS OTHERWISE SPECIFIED, DIMENSIONS ARE IN INCHES [mm]	APPROVALS	DATE
OVERALL CABLE LENGTH TOLERANCE: ≤12 [305] = +1 [25] / -0 >12 [305] ≤60 [1524] = +2 [51] / -0 >60 [1524] ≤120 [3048] = +4 [102] / -0 >120 [3048] ≤300 [7620] = +6 [152] / -0 >300 [7620] = +5% / -0	DRAWN BY DCUI	03/03/16
ALL OTHER DIMENSIONAL TOLERANCES: .X = ± .2 [5] FRACTIONS ± 1/32 .XX = ± .02 [5] ANGLES ± 1° .XXX = ± .005 [1.3]	CHECKED BY D.DESJARDIN	03/08/16
THIRD-ANGLE PROJECTION	APPROVED BY GUTTA DAURO	03/08/16
	CONFIGURATION DETAILS OF UNDIMENSIONED FEATURES MAY VARY	
	COLOR VARIATIONS MAY OCCUR	

L-com
an INFINITI® brand

50 High Street, West Mill,
North Andover, MA 01845 USA.
Phone: 1.800.341.5266
1.978.682.6936

CATEGORY: TELECOM/MODULAR

PRODUCT DESCRIPTION: C6A M12X M/F PN TPE 26 TEL

SIZE: A CAGE CODE: 43321 DWG. NO.: TRG626-T6T REV. C

SCALE: NONE CAD FILE: TRG626-T6T.SLDDRW SHEET 1 OF 1