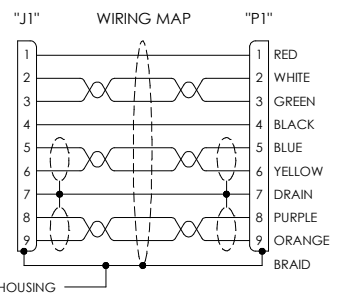
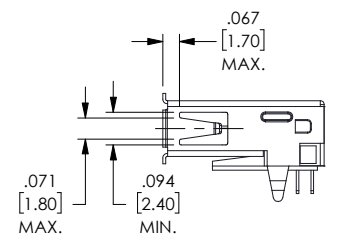
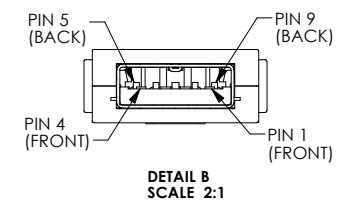
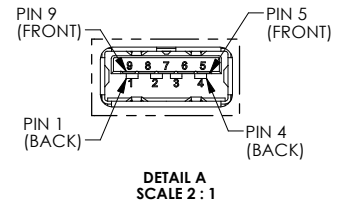
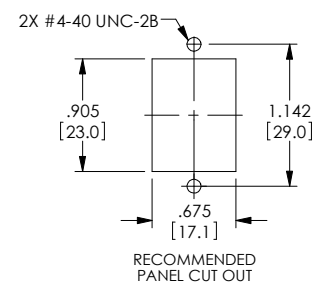
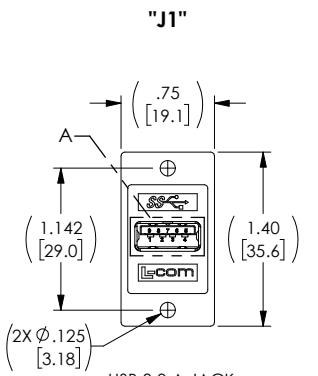
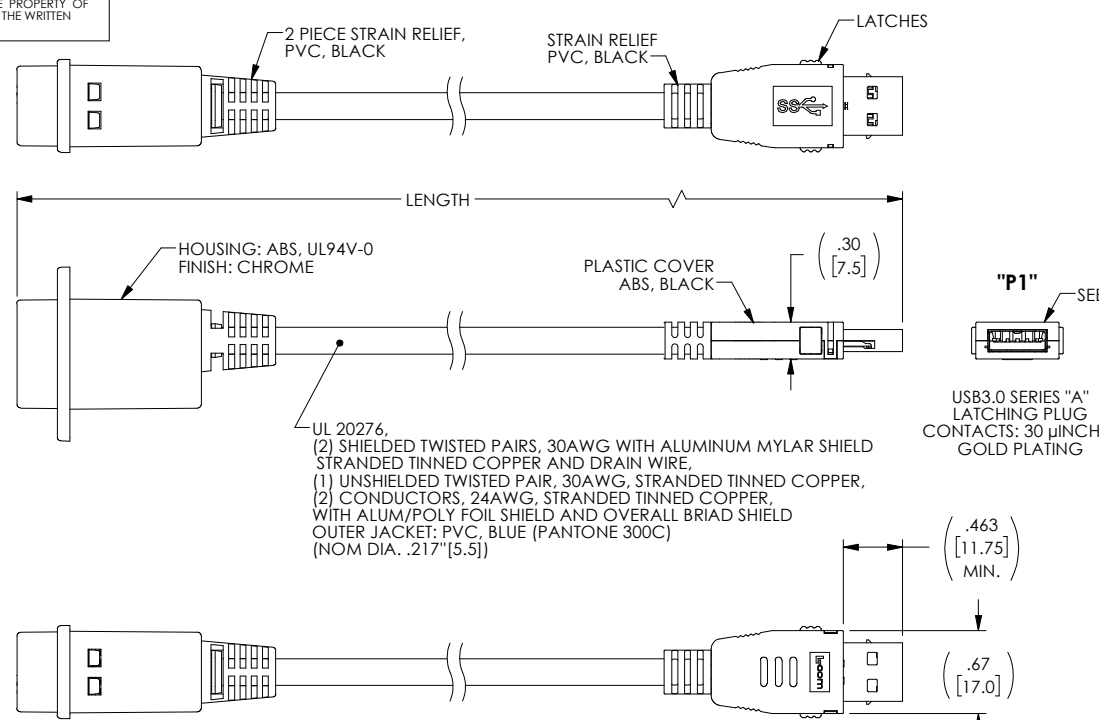


THE INFORMATION CONTAINED IN THIS DRAWING IS THE SOLE PROPERTY OF L-COM, INC. ANY REPRODUCTIONS IN PART OR WHOLE WITHOUT THE WRITTEN PERMISSION OF L-COM, INC. IS PROHIBITED.

REVISIONS			
REV	DESCRIPTION	DATE	CHANGED BY
A	REV A DRAWING RELEASED	03/06/18	JLABOY



PART NUMBER	LENGTH METERS [FEET]
U3A00030-03M	0.3 [.98]
U3A00030-05M	0.5 [1.64]
U3A00030-075M	0.75 [2.46]
U3A00030-1M	1.0 [3.28]
U3A00030-105M	1.5 [4.92]

- NOTES:**
1. OPERATING TEMPERATURE: -10°C TO +70°C
 2. CABLE ASSEMBLY SHALL BE TESTED FOR CONTINUITY.
 3. CABLE ASSEMBLY SHALL BE INDIVIDUALLY PACKAGED IN ACCORDANCE WITH L-COM SPECIFICATION PS-0031.

REGULATORY COMPLIANCE:
CE2011/65/EU (RoHS DIRECTIVE)

UNLESS OTHERWISE SPECIFIED, DIMENSIONS ARE IN INCHES (mm)
OVERALL CABLE LENGTH TOLERANCE:
≤12 (305) ≤60 (1524) = +25(1) / -0
≤12 (305) ≤60 (1524) = +4 (102) / -0
>60 (1524) ≤120 (3048) = +4 (102) / -0
>120 (3048) ≤300 (7620) = +4 (102) / -0
>300 (7620) = +5% / -0%

ALL OTHER DIMENSIONAL TOLERANCES:
X = ±2 (5.08)
XX = ±0.5 (12.7)
XXX = ±.005 (127)

PROJECTION

APPROVALS	DATE
DRAWN BY S.LI	06/27/17
CHECKED BY B.ZHANG	06/27/17
APPROVED BY S.PAN	06/27/17

CONFIGURATION DETAILS OF UNDIMENSIONED FEATURES MAY VARY
COLOR VARIATIONS MAY OCCUR

L-com Global Connectivity 50 HIGH STREET NORTH ANDOVER, MA 01845

CATEGORY: USB

PRODUCT DESCRIPTION: CA, USB3.0 A-F PNL/A LATCH

SIZE: B	PSCM NO.: 43321	DWG. NO.: U3A00030	REV.: A
----------------	------------------------	---------------------------	----------------

SCALE: 1:1 CAD FILE: U3A00030.SLDRAW SHEET 1 OF 1