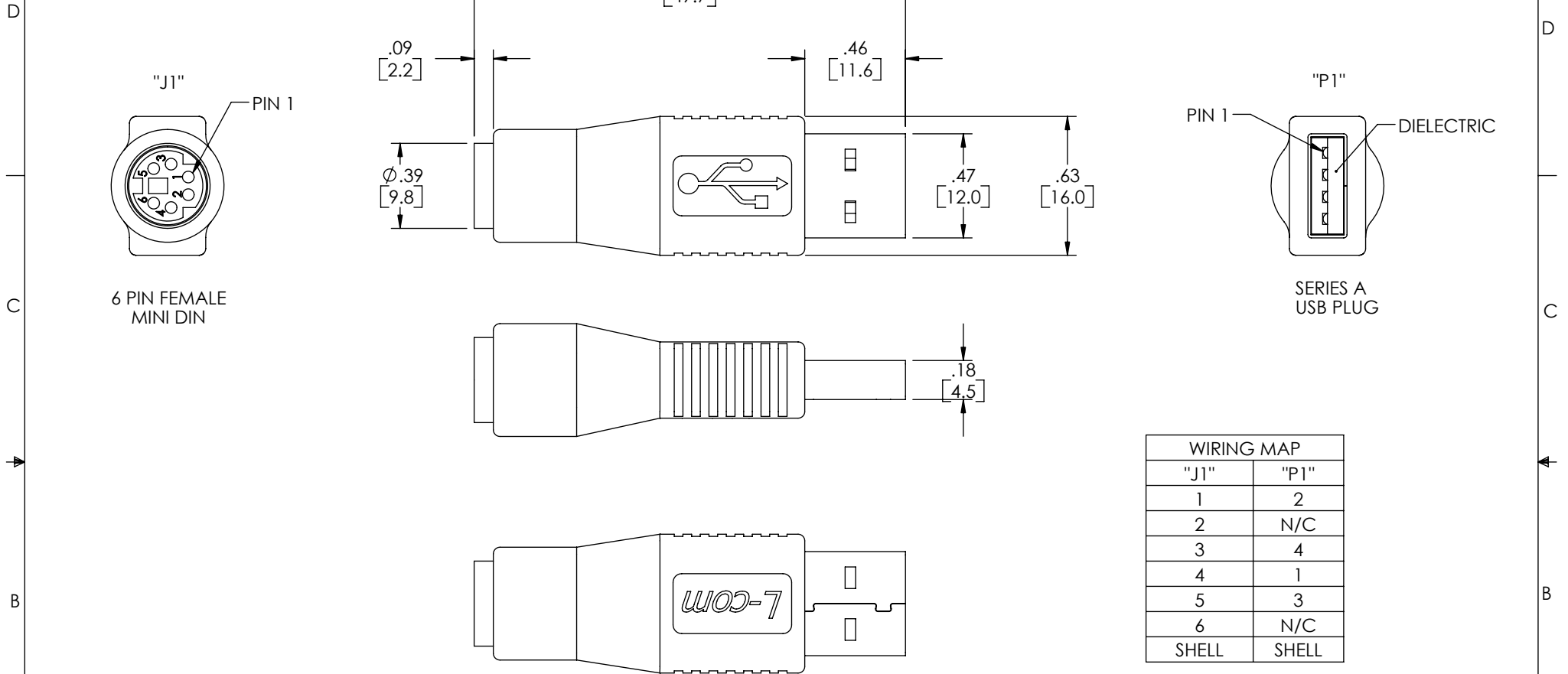


THE INFORMATION CONTAINED IN THIS DRAWING IS THE SOLE PROPERTY OF L-COM, INC. ANY REPRODUCTION IN PART OR WHOLE WITHOUT THE WRITTEN PERMISSION OF L-COM, INC. IS PROHIBITED.

REVISIONS			
REV	DESCRIPTION	DATE	APPROVED
A	INITIAL RELEASE	5/5/08	D.GRIFFIN



WIRING MAP	
"J1"	"P1"
1	2
2	N/C
3	4
4	1
5	3
6	N/C
SHELL	SHELL

NOTES:

MATERIAL:

INSULATOR: PBT, UL 94V-0
 CONTACT: BRASS, GOLD PLATE OVER NICKEL.
 HOOD: PVC, LIGHT GRAY.

FINISH:

SHELL: NICKEL SILVER.

MISCELLANEOUS:

CURRENT RATING: 3 AMP
 DIELECTRIC STRENGTH: 1000V AC FOR 1 MINUTE.
 INSULATOR RESISTANCE: 1000M OHMS MIN AT 500V DC.

UNLESS OTHERWISE SPECIFIED, DIMENSIONS ARE IN INCHES [mm] OVERALL CABLE LENGTH TOLERANCE: ≤12 [305] = +1 [25] / -0 >12 [305] ≤60 [1524] = -2[51] / -0 >60 [1524] ≤120 [3048] = +4 / -0 >120 [3048] ≤300 [7620] = +6 / -0 >300 [7620] = +5% / -0% ALL OTHER DIMENSIONAL TOLERANCES: .X = .3 .XX = .15 PROJECTION 	APPROVALS DRAWN BY D.CASTRO CHECKED BY D.PARHAM APPROVED BY S.SMITH	DATE 5/2/08 5/2/08 5/5/08	 45 BEECHWOOD DRIVE NORTH ANDOVER, MA 01845
	CATEGORY USB		PRODUCT DESCRIPTION ADPT, USB A-M/MINI DIN 6-F
	CONFIGURATION DETAILS OF UNDIMENSIONED FEATURES MAY VARY		
	COLOR VARIATIONS MAY OCCUR	SIZE A	FSCM NO. 43321

SCALE: NONE | CAD FILE: UAD018MF.SLDDRW | SHEET 1 OF 1