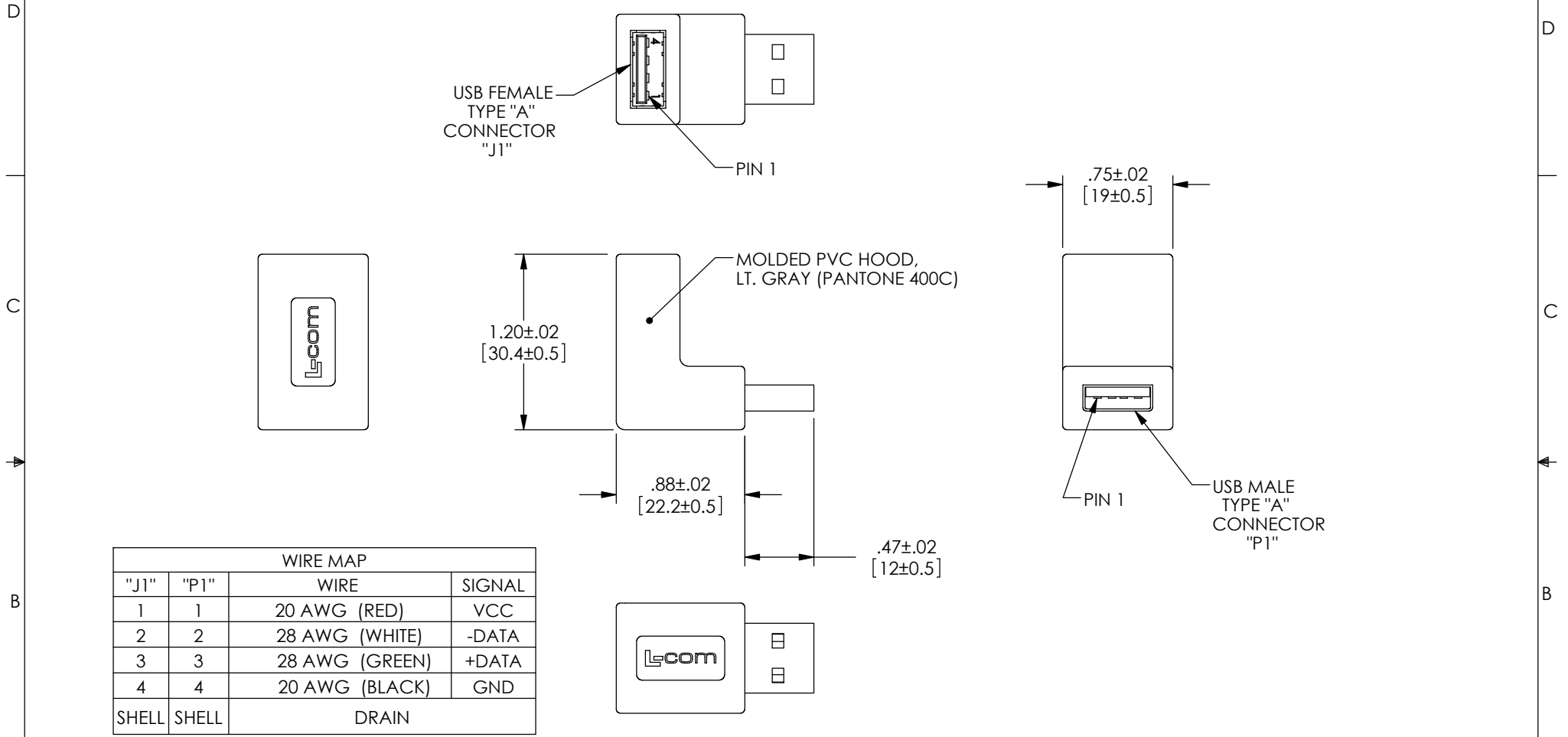


THE INFORMATION CONTAINED IN THIS DRAWING IS THE SOLE PROPERTY OF L-COM, INC. ANY REPRODUCTION IN PART OR WHOLE WITHOUT THE WRITTEN PERMISSION OF L-COM, INC. IS PROHIBITED.

RoHS Compliant ✓

REVISIONS			
REV	DESCRIPTION	DATE	APPROVED
A	INITIAL RELEASE	3/18/09	D.GRIFFIN
B	ECN 3897: LT. GRAY WAS BLACK, ADDED DRAIN WIRE TO WIRE MAP	3/20/09	D. CASTRO
C	ECN 6638: UPDATED FORMAT, PACKAGING, AND LOGOS	1/31/13	D. DESJARDIN



WIRE MAP			
"J1"	"P1"	WIRE	SIGNAL
1	1	20 AWG (RED)	VCC
2	2	28 AWG (WHITE)	-DATA
3	3	28 AWG (GREEN)	+DATA
4	4	20 AWG (BLACK)	GND
SHELL	SHELL	DRAIN	

NOTES:

1. ADAPTOR SHALL BE TESTED FOR CONTINUITY.

2. ADAPTOR SHALL BE INDIVIDUALLY PACKAGED IN ACCORDANCE WITH L-COM SPECIFICATION PS-0031.



UNLESS OTHERWISE SPECIFIED, DIMENSIONS ARE IN INCHES [mm] OVERALL CABLE LENGTH TOLERANCE: $\le 12 [305] = +1 [25] / -0$ $>12 [305] \le 60 [1524] = +2 [51] / -0$ $>60 [1524] \le 120 [3048] = +4 [102] / -0$ $>120 [3048] \le 300 [7620] = +6 [152] / -0$ $>300 [7620] = +3\% / -0\%$	APPROVALS	DATE		45 BEECHWOOD DRIVE NORTH ANDOVER, MA 01845
	DRAWN BY D. CASTRO	3/9/09		CATEGORY USB
ALL OTHER DIMENSIONAL TOLERANCES: .X = ± .2 .XX = ± .02 .XXX = ± .005	CHECKED BY D. PARHAM	3/13/09	PRODUCT DESCRIPTION ADPT, USB A M/F 90 DEG EXIT 2	
PROJECTION 	APPROVED BY S. SMITH	3/13/09	CONFIGURATION DETAILS OF UNDIMENSIONED FEATURES MAY VARY	SCALE: NONE
	COLOR VARIATIONS MAY OCCUR	SIZE A	FSCM NO. 43321	DWG. NO. UADAA90-2
			CAD FILE: UADAA90-2.SLDDRW	SHEET 1 OF 1