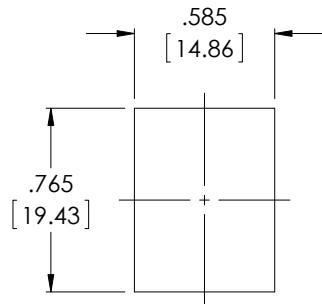


THE INFORMATION CONTAINED IN THIS DRAWING IS THE SOLE PROPERTY OF L-COM, INC. ANY REPRODUCTION IN PART OR WHOLE WITHOUT THE WRITTEN PERMISSION OF L-COM, INC. IS PROHIBITED.

REVISIONS			
REV	DESCRIPTION	DATE	APPROVED
A	INITIAL RELEASE	8/15/03	DFF
B	ECN1535: CHANGED PANEL OPENING. SIZE WAS .580 X .760	10/6/03	DFF
C	ECN1619: ADDED COMPONENT SPECIFICATION TABLE	12/15/03	DFF
D	ECN 6881: UPD DWG FORMAT. CONSOLIDATED ALL COLORS TO ONE DWG.	6/10/13	D. DESJARDIN



RECOMMENDED
PANEL OPENING

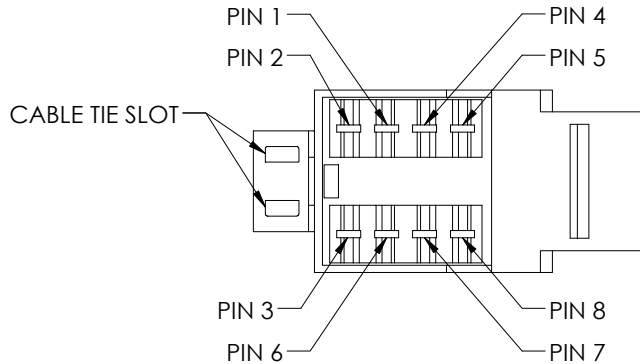
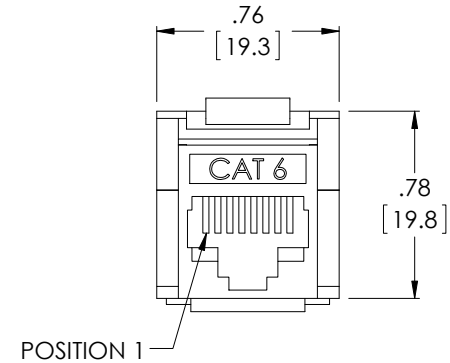
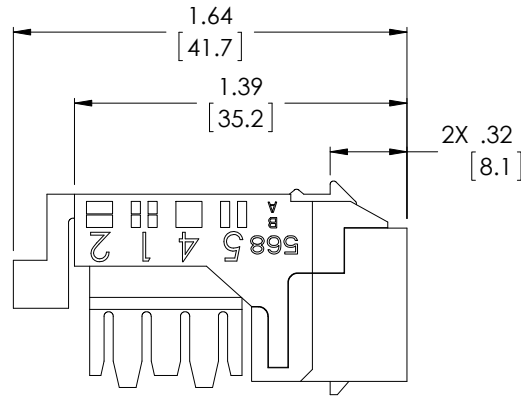


CHART "A"	
MODEL NUMBER	COLOR
UJ110C6-BLK	BLACK
UJ110C6-BLU	BLUE
UJ110C6-FW	OFFICE WHITE
UJ110C6-GRN	GREEN
UJ110C6-GRY	GRAY
UJ110C6-I	IVORY
UJ110C6-ORN	ORANGE
UJ110C6-RED	RED
UJ110C6-VIO	VIOLET
UJ110C6-W	WHITE
UJ110C6-YEL	YELLOW

NOTES:

MATERIAL:
HOUSING: ABS, UL94V-0 COLOR: SEE CHART "A"
CONTACTS: COPPER ALLOY
CONTACT PLATING: GOLD

MISCELLANEOUS:
JACK DURABILITY: MINIMUM OF 500 INSERTION AND WITHDRAWAL CYCLES
OPERATING TEMPERATURE: 0 °C TO 60 °C
RATING: CATEGORY 6
PANEL THICKNESS .06" MAX

COMPONENT SHALL BE INDIVIDUALLY PACKAGED IN ACCORDANCE WITH L-COM SPECIFICATION PS-0031.
CABLE TIE SUPPLIED

ALL DIMENSIONS ARE FOR REFERENCE ONLY

REGULATORY COMPLIANCE:
ROHS, CE

UNLESS OTHERWISE SPECIFIED, DIMENSIONS ARE IN INCHES [mm] OVERALL CABLE LENGTH TOLERANCE: ≤12 [305] = +1 [25] / -0 >12 [305] ≤60 [1524] = +2 [51] / -0 >60 [1524] ≤120 [3048] = +4 [102] / -0 >120 [3048] ≤300 [7620] = +6 [152] / -0 >300 [7620] = +5% / -0% ALL OTHER DIMENSIONAL TOLERANCES: .X = ± .2 [5.08] .XX = ± .02 [1.51] .XXX = ±.005 [1.13]	APPROVALS	DATE		45 BEECHWOOD DRIVE NORTH ANDOVER, MA 01845			
	DRAWN BY D. PARHAM	8/3/2003					
	CHECKED BY T. CLARK	8/15/2003					
	APPROVED BY C. McCORMICK	8/15/2003					
PROJECTION 	CONFIGURATION DETAILS OF UNDIMENSIONED FEATURES MAY VARY	COLOR VARIATIONS MAY OCCUR	<table border="1"> <tr> <td>SIZE A</td> <td>FSCM NO. 43321</td> <td>DWG. NO. UJ110C6</td> <td>REV. D</td> </tr> </table>	SIZE A	FSCM NO. 43321	DWG. NO. UJ110C6	REV. D
SIZE A	FSCM NO. 43321	DWG. NO. UJ110C6	REV. D				
SCALE: NONE		CAD FILE: UJ110C6.SLDDRW		SHEET 1 OF 1			

CATEGORY		TELECOM/MODULAR	
PRODUCT DESCRIPTION		KEYSTONE 110-RJ45 JK CAT6	