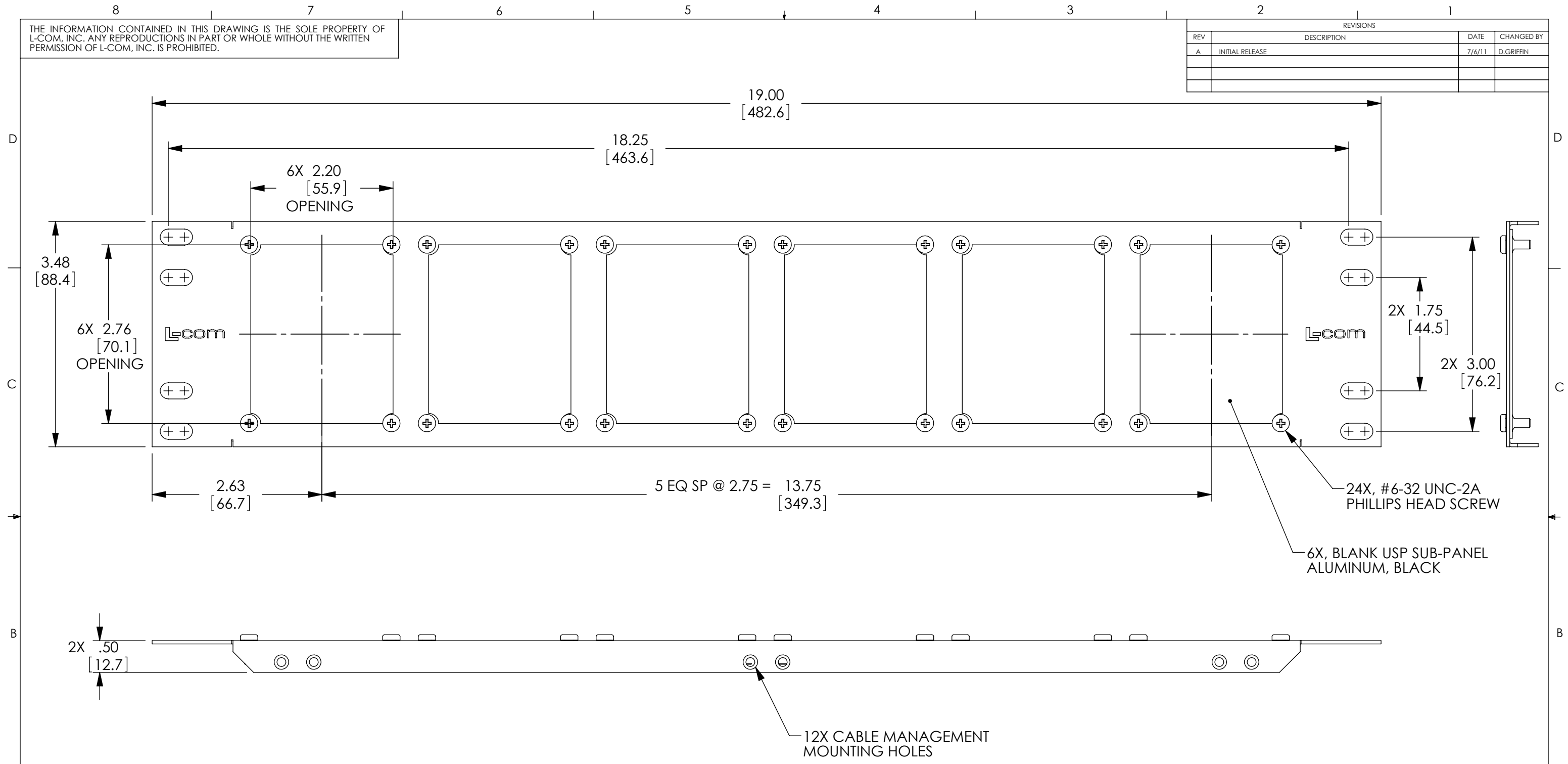


THE INFORMATION CONTAINED IN THIS DRAWING IS THE SOLE PROPERTY OF L-COM, INC. ANY REPRODUCTIONS IN PART OR WHOLE WITHOUT THE WRITTEN PERMISSION OF L-COM, INC. IS PROHIBITED.

REVISIONS			
REV	DESCRIPTION	DATE	CHANGED BY
A	INITIAL RELEASE	7/6/11	D.GRIFFIN



- NOTES:**
1. MATERIAL: .06 THICK COLD ROLLED STEEL.
 2. PANEL FINISH: FLAT BLACK POWDER COAT.
 3. SILKSCREEN COLOR: WHITE.
 4. PANEL IS SHIPPED WITH 6X SUB-PANELS AND HARDWARE NOT ASSEMBLED.
 5. PANEL SHALL BE PACKAGED IN ACCORDANCE WITH L-COM SPECIFICATION PS-0014.

RoHS Compliant ✓

UNLESS OTHERWISE SPECIFIED, DIMENSIONS ARE IN INCHES [mm]	APPROVALS	DATE	Global Connectivity 45 BEECHWOOD DRIVE NORTH ANDOVER, MA 01845
	DRAWN BY D. CASTRO	7/6/11	
	CHECKED BY D. PARHAM	7/6/11	
	APPROVED BY M. MARTINEZ	7/6/11	
DIMENSIONAL TOLERANCES: .X = ±.1 .XX = ±.02 .XXX = ±.005	CONFIGURATION DETAILS OF UNDIMENSIONED FEATURES MAY VARY		CATEGORY RACK PANEL
ANGULAR TOLERANCES: ALL = ± 1°	COLOR VARIATIONS MAY OCCUR		PRODUCT DESCRIPTION 3.5"X19" PANEL KIT W/6 USP-AL
PROJECTION	SIZE B	FSCM NO. 43321	DWG. NO. UPR-A-KIT
	SCALE: 1:1	CAD FILE: UPR-A-KIT.SLDDRW	REV. A