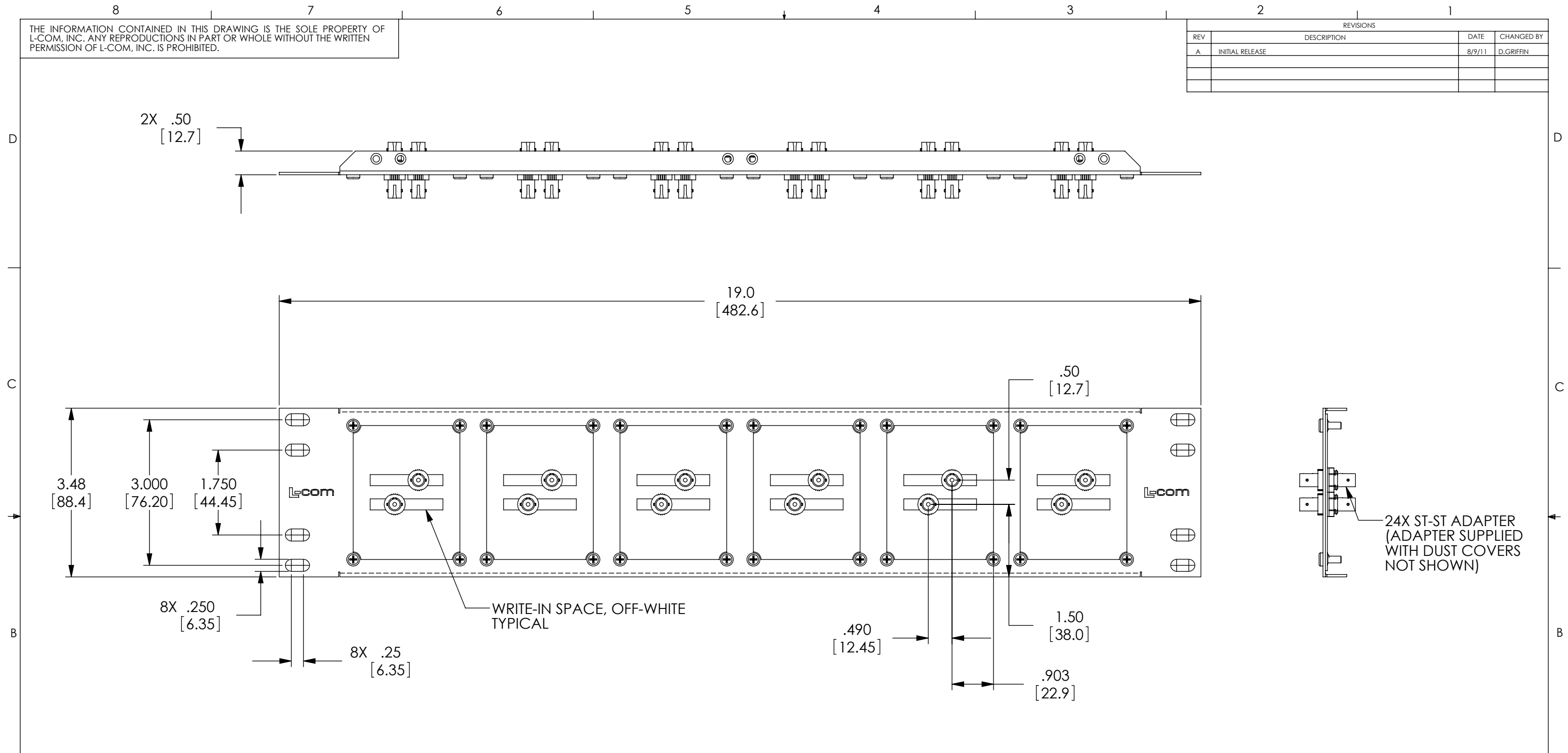


THE INFORMATION CONTAINED IN THIS DRAWING IS THE SOLE PROPERTY OF L-COM, INC. ANY REPRODUCTIONS IN PART OR WHOLE WITHOUT THE WRITTEN PERMISSION OF L-COM, INC. IS PROHIBITED.

REVISIONS			
REV	DESCRIPTION	DATE	CHANGED BY
A	INITIAL RELEASE	8/9/11	D.GRIFFIN



NOTES:

1. THIS PANEL ASSEMBLY USES SIX L-COM USP2FOPTB UNIVERSAL SUB-PANELS, EACH HAVING 2 FOA-001 FEED-THROUGH ADAPTERS ACCEPTING ST TYPE FIBER OPTIC CABLE PLUGS.
2. BASIC PANEL IS 16 GAUGE COLD ROLLED STEEL
PANEL FINISH: FLAT BLACK POWDER COAT
3. SUB-PANELS ARE 16 GAUGE COLD ROLLED STEEL,
PANEL FINISH: FLAT BLACK POWDER COAT.
4. PANEL SHALL BE PACKAGED PER L-COM SPEC. PKG-0014

UNLESS OTHERWISE SPECIFIED, DIMENSIONS ARE IN INCHES [mm]
 OVERALL CABLE LENGTH TOLERANCE:
 ≤12 [305] = +1 [25] / -0
 >12 [305] ≤60 [1524] = +2[51] / -0
 >60 [1524] ≤120 [3048] = +4 [102] / -0
 >120 [3048] ≤300 [7620] = +6 [152] / -0
 >300 [7620] = +5% / -0%
 ALL OTHER DIMENSIONAL TOLERANCES:
 .X = ±.2
 .XX = ±.02
 .XXX = ±.005



APPROVALS	DATE
DRAWN BY D. CASTRO	8/5/11
CHECKED BY D. FRISIELLO	8/8/11
APPROVED BY M. MARTINEZ	8/8/11

L-com Global Connectivity 45 BEECHWOOD DRIVE NORTH ANDOVER, MA 01845

CATEGORY RACK PANELS	
PRODUCT DESCRIPTION 3.5"X19" PNL/12 ST SMX CPL BLK	
SIZE B	FSCM NO. 43321
DWG. NO. UPR35-12STB	REV. A
SCALE: 1:2	CAD FILE: UPR35-12STB.SLDDRW
SHEET 1 OF 1	