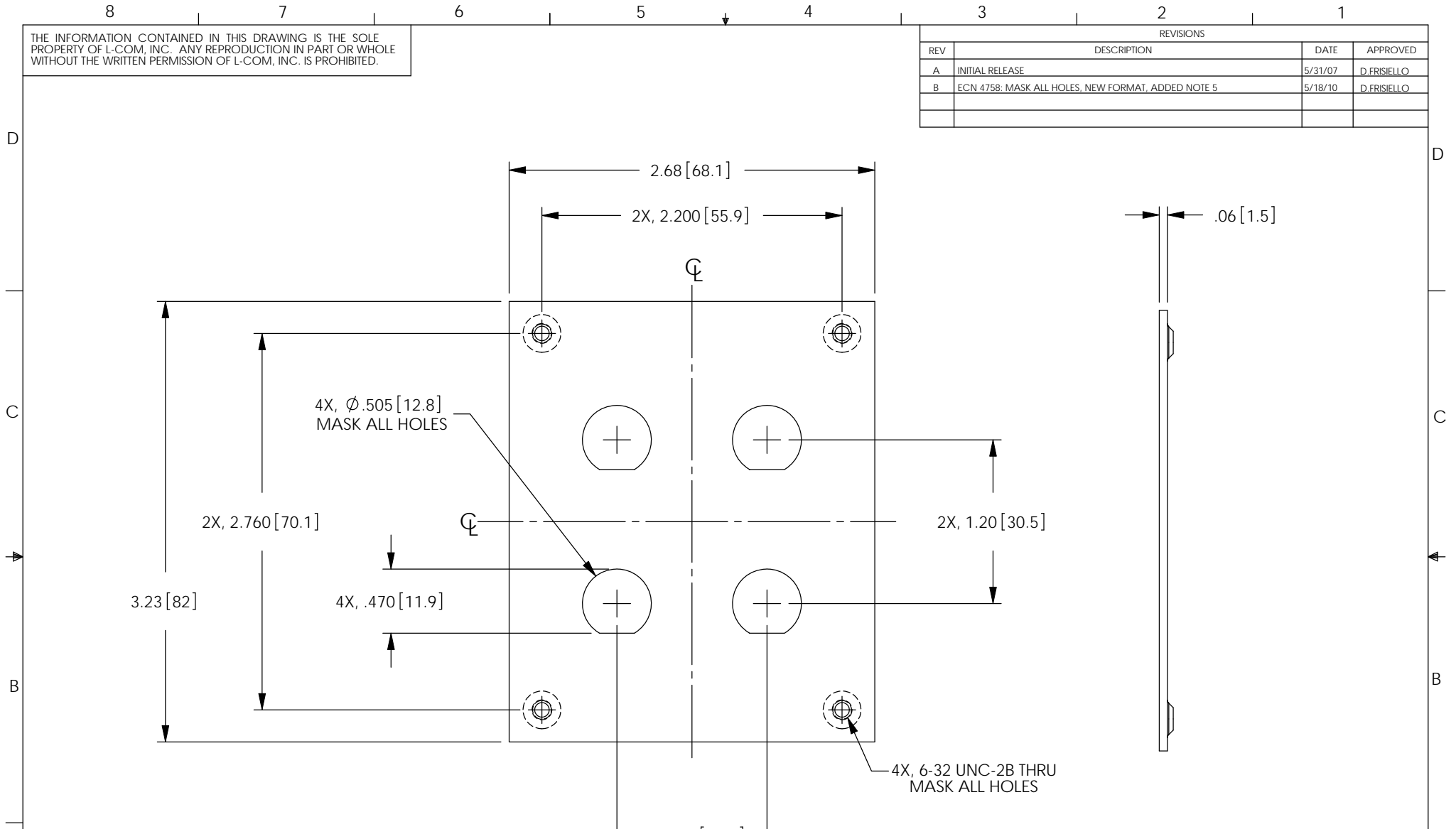


THE INFORMATION CONTAINED IN THIS DRAWING IS THE SOLE PROPERTY OF L-COM, INC. ANY REPRODUCTION IN PART OR WHOLE WITHOUT THE WRITTEN PERMISSION OF L-COM, INC. IS PROHIBITED.

REVISIONS			
REV	DESCRIPTION	DATE	APPROVED
A	INITIAL RELEASE	5/31/07	D.FRISIELLO
B	ECN 4758: MASK ALL HOLES, NEW FORMAT, ADDED NOTE 5	5/18/10	D.FRISIELLO



- NOTES:**
1. MATERIAL: .06 [1.5] THK COLD ROLLED STEEL.
 2. FINISH: FLAT BLACK POWDER COAT.
 3. KIT CONTAINS 4, #6-32 UNC SCREWS.
 4. ALL DIMENSIONS SHOWN ARE FOR REFERENCE ONLY.
 5. ALL DIMENSIONS ARE AFTER FINISH IS APPLIED.
 6. COMPONENT SHALL BE INDIVIDUALLY PACKAGED IN ACCORDANCE WITH L-COM SPECIFICATION PS-0031.

UNLESS OTHERWISE SPECIFIED, DIMENSIONS ARE IN INCHES [mm] DIMENSIONAL TOLERANCES: .X = ±.1 .XX = ±.01 .XXX = ±.005 ANGULAR TOLERANCES: ALL = ± 1° PROJECTION 	APPROVALS	DATE		45 BEECHWOOD DRIVE NORTH ANDOVER, MA 01845
	DRAWN BY D.FRISIELLO	5/31/07		
	CHECKED BY P.McNEIL	5/31/07	CATEGORY	SUB PANEL
	APPROVED BY P.McNEIL	5/31/07	PRODUCT DESCRIPTION	
CONFIGURATION DETAILS OF UNDIMENSIONED FEATURES MAY VARY	SIZE A	FSCM NO. 43321	DWG. NO. USP224B	REV. B
COLOR VARIATIONS MAY OCCUR	SCALE: NONE	CAD FILE: USP224B.SLDDRW	SHEET 1 OF 1	