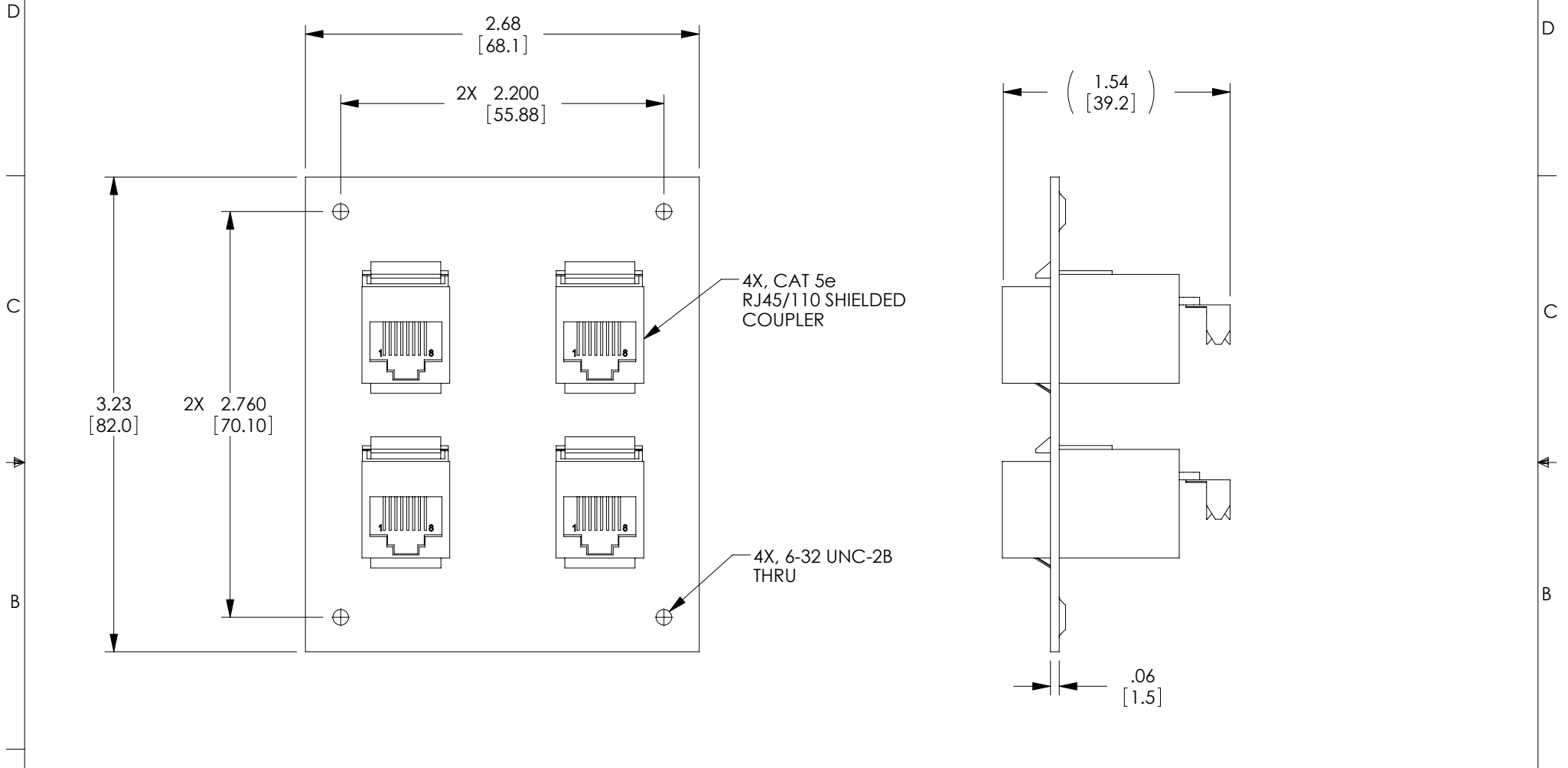


THE INFORMATION CONTAINED IN THIS DRAWING IS THE SOLE PROPERTY OF L-COM, INC. ANY REPRODUCTION IN PART OR WHOLE WITHOUT THE WRITTEN PERMISSION OF L-COM, INC. IS PROHIBITED.

REVISIONS			
REV	DESCRIPTION	DATE	APPROVED
A	INITIAL RELEASE	8/8/11	D.GRIFFIN



NOTES:

MATERIAL: .06 THICK COLD ROLLED STEEL.

FINISH: FLAT BLACK POWDER COAT.

KIT INCLUDES (4) 6-32 UNC-2A PAN HEAD SCREWS.

COMPONENT ASSEMBLY SHALL BE INDIVIDUALLY PACKAGED IN ACCORDANCE WITH L-COM SPECIFICATION PS-0031.

RoHS Compliant ✓

UNLESS OTHERWISE SPECIFIED, DIMENSIONS ARE IN INCHES [mm] OVERALL CABLE LENGTH TOLERANCE: ≤12 [305] = +1 [25] / -0 >12 [305] ≤60 [1524] = +2 [51] / -0 >60 [1524] ≤120 [3048] = +4 [102] / -0 >120 [3048] ≤300 [7620] = +6 [152] / -0 >300 [7620] = +3% / -0% ALL OTHER DIMENSIONAL TOLERANCES: .X = ±.2 .XX = ±.02 .XXX = ±.005	APPROVALS DRAWN BY D.FRISIELLO	DATE 8/4/11		45 BEECHWOOD DRIVE NORTH ANDOVER, MA 01845
	CHECKED BY M.SEDLESKI	DATE 8/4/11		CATEGORY SUB PANELS
APPROVED BY M.MARTINEZ	DATE 8/4/11	PRODUCT DESCRIPTION SUB PANEL W/4 C5E RJ45/110 SHD BLK	SCALE: NONE CAD FILE: USP4MK-SC5B.SLDDRW SHEET 1 OF 1	
PROJECTION 	COLOR VARIATIONS MAY OCCUR	SIZE A	FSCM NO. 43321	DWG. NO. USP4MK-SC5B