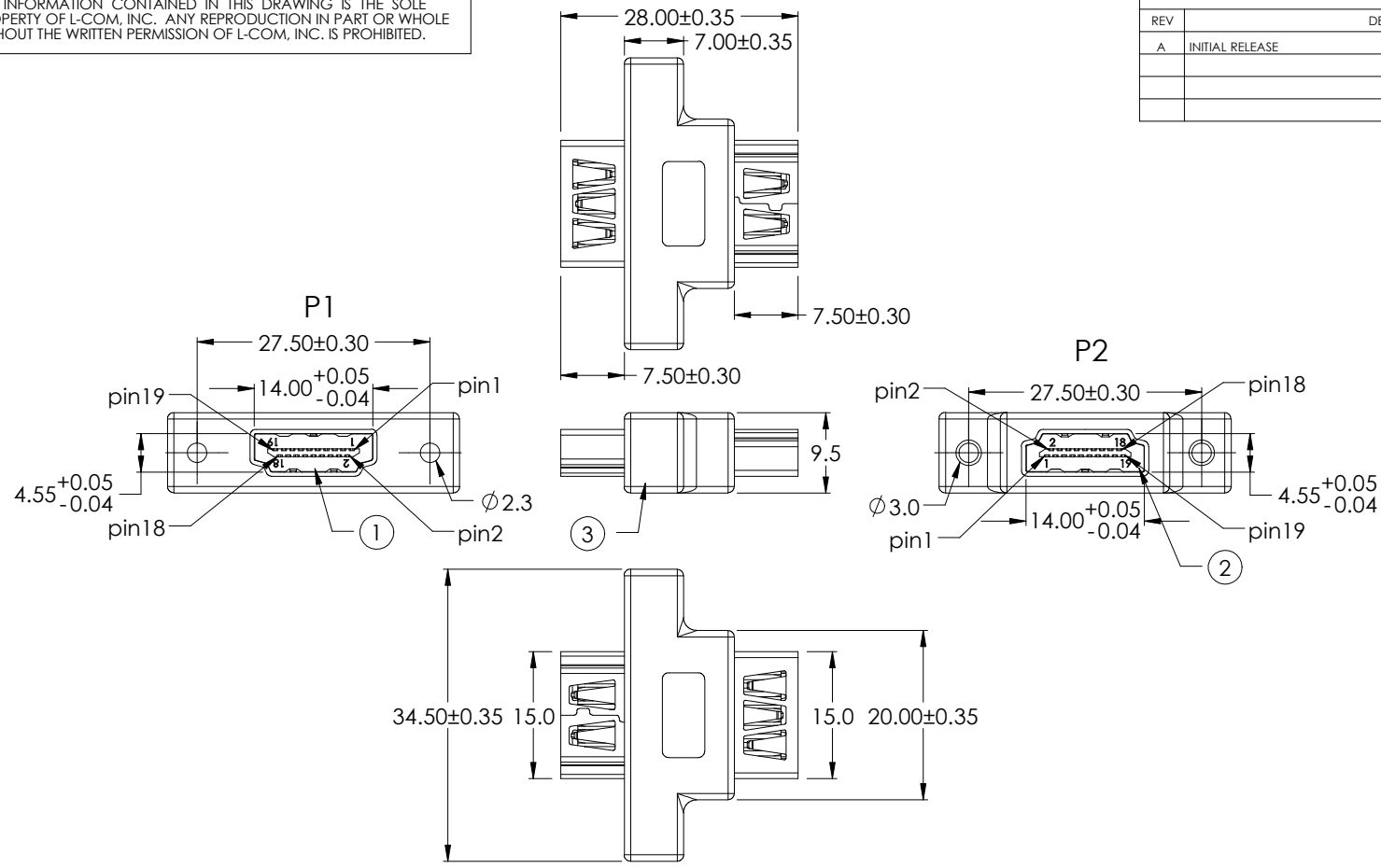


THE INFORMATION CONTAINED IN THIS DRAWING IS THE SOLE PROPERTY OF L-COM, INC. ANY REPRODUCTION IN PART OR WHOLE WITHOUT THE WRITTEN PERMISSION OF L-COM, INC. IS PROHIBITED.

REVISIONS			
REV	DESCRIPTION	DATE	APPROVED
A	INITIAL RELEASE	08/01/17	J.YOU



PIN OUT		
P1		P2
01	_____	01
02	_____	02
03	_____	03
04	_____	04
05	_____	05
06	_____	06
07	_____	07
08	_____	08
09	_____	09
10	_____	10
11	_____	11
12	_____	12
13	_____	13
14	_____	14
15	_____	15
16	_____	16
17	_____	17
18	_____	18
19	_____	19
S	_____	S

NOTES:

Electrical Properties:

1. It should be no any open/short, miswiring and intermittent failures.
2. The cable shall be 100% electrical test.
3. Voltage test: DC 300V 10MS;
Insulation resistance: 5.0M ohm/min;
Conductance resistance: 5.0 ohm/max.

Machinery Character:

1. All dimension are "mm" except specified.
2. The cable should be clean, free of oiled/flash/burred.
3. Package: individually packaged in a clear polybag.
4. Cable Ass'y shall be RoHS Compliant.

Item	DESCRIPTION	UNIT	QTY
3	Outer molded: 45P PVC, Color: Black.	G	10
2	Conn: HDMI 19P A Female, pin gold flash, insulaton Black.	PCS	1
1	Conn: HDMI 19P A Female, pin gold flash, insulaton Black.	PCS	1

UNLESS OTHERWISE SPECIFIED, DIMENSIONS ARE IN INCHES [mm] OVERALL CABLE LENGTH TOLERANCE: ≤12 [305] = +1 [25] / -0 >12 [305] ≤60 [1524] = +2 [51] / -0 >60 [1524] ≤120 [3048] = +4 [102] / -0 >120 [3048] ≤300 [7620] = +6 [152] / -0 >300 [7620] = +5% / -0% ALL OTHER DIMENSIONAL TOLERANCES: .X = ± .2 [5.08] .XX = ± .02 [1.51] .XXX = ± .005 [1.13]	APPROVALS	DATE
	DRAWN BY J.YOU	08/01/17
	CHECKED BY B.GATES	08/01/17
	APPROVED BY B.GATES	08/01/17
PROJECTION 	CONFIGURATION DETAILS OF UNDIMENSIONED FEATURES MAY VARY	
	COLOR VARIATIONS MAY OCCUR	

		50 HIGH STREET NORTH ANDOVER, MA 01845	
CATEGORY		AUDIO/VIDEO	
PRODUCT DESCRIPTION			
HDMI A(F) TO A(F) 180°			
SIZE A	FSCM NO. 43321	DWG. NO. VHF00001	REV. A
SCALE: NONE		CAD FILE: VHF00001.SLDDRW	
			SHEET 1 OF 1