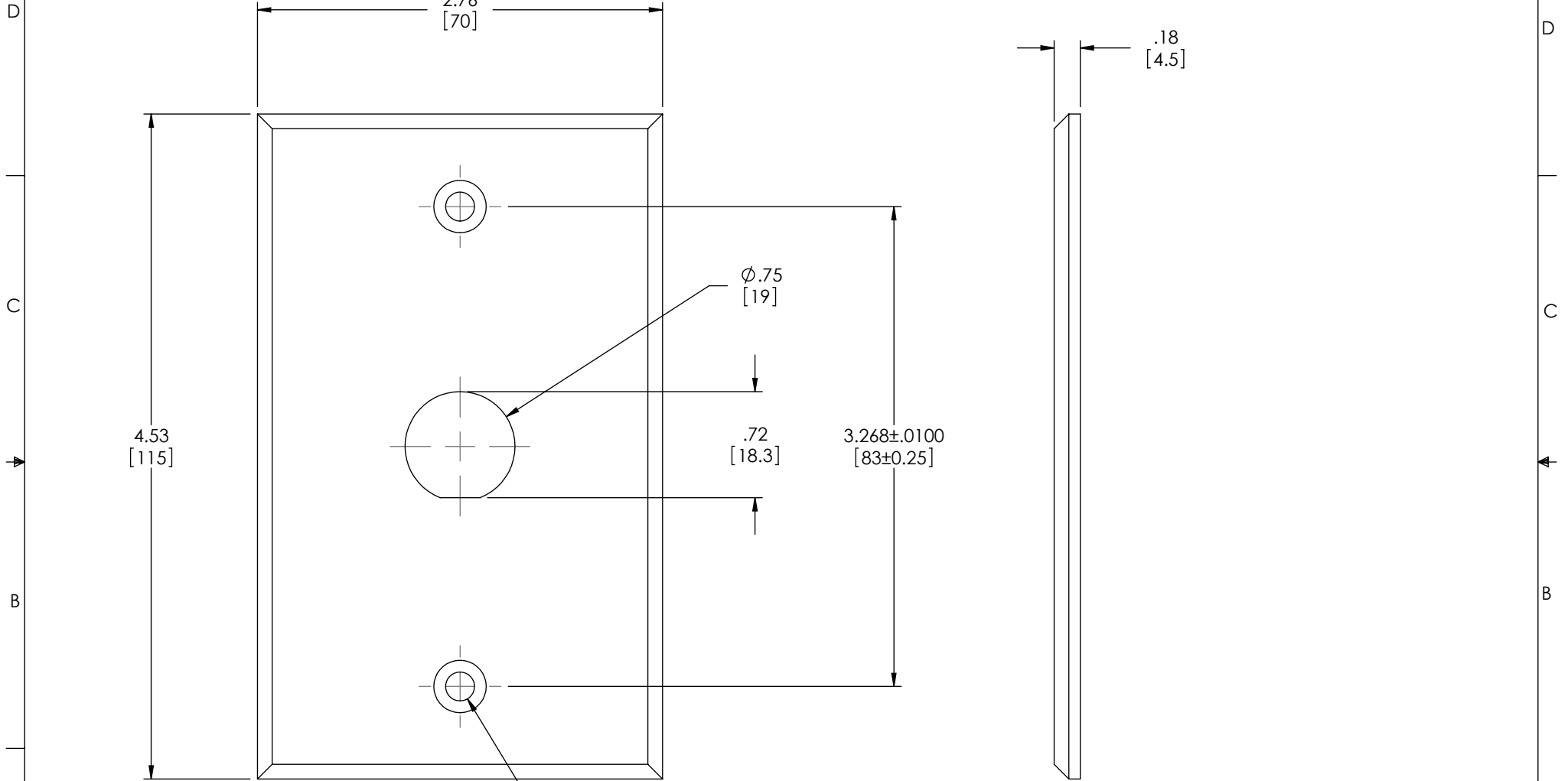


THE INFORMATION CONTAINED IN THIS DRAWING IS THE SOLE PROPERTY OF L-COM, INC. ANY REPRODUCTION IN PART OR WHOLE WITHOUT THE WRITTEN PERMISSION OF L-COM, INC. IS PROHIBITED.

REVISIONS			
REV	DESCRIPTION	DATE	APPROVED
A	INITIAL RELEASE	05/28/03	MCCORMICK
B	ECN5615: UPDATED TO SUPPLIERS DIMENSIONS	07/19/11	DFP



2X ϕ .20
[5]

- NOTES:
 1. MATERIAL: STAINLESS STEEL
 2. MATERIAL THICKNESS: .032" [.8]
 3. UNLESS OTHERWISE SPECIFIED TOLERANCE TO \pm .008 [.2]

UNLESS OTHERWISE SPECIFIED, DIMENSIONS ARE IN INCHES [mm] OVERALL CABLE LENGTH TOLERANCE: ≤ 12 [305] = +1 [25] / -0 > 12 [305] ≤ 60 [1524] = +2 [51] / -0 > 60 [1524] ≤ 120 [3048] = +4 [102] / -0 > 120 [3048] ≤ 300 [7620] = +6 [152] / -0 > 300 [7620] = +3% / -0% ALL OTHER DIMENSIONAL TOLERANCES: .X = \pm .2 .XX = \pm .02 .XXX = \pm .005	APPROVALS DRAWN BY C.MCCORMICK CHECKED BY D.PARHAM APPROVED BY R.CARRICK	DATE 05/28/2003 05/28/2003 05/28/2003	45 BEECHWOOD DRIVE NORTH ANDOVER, MA 01845		
	CONFIGURATION DETAILS OF UNDIMENSIONED FEATURES MAY VARY	CATEGORY TELECOM/MODULAR		PRODUCT DESCRIPTION WALL PLATE SS W/1 .75 DIA	
PROJECTION 	COLOR VARIATIONS MAY OCCUR	SIZE A	FSCM NO. 43321	DWG. NO. WPC10	REV. B
SCALE: NONE		CAD FILE: WPC10.SLDDRW		SHEET 1 OF 1	