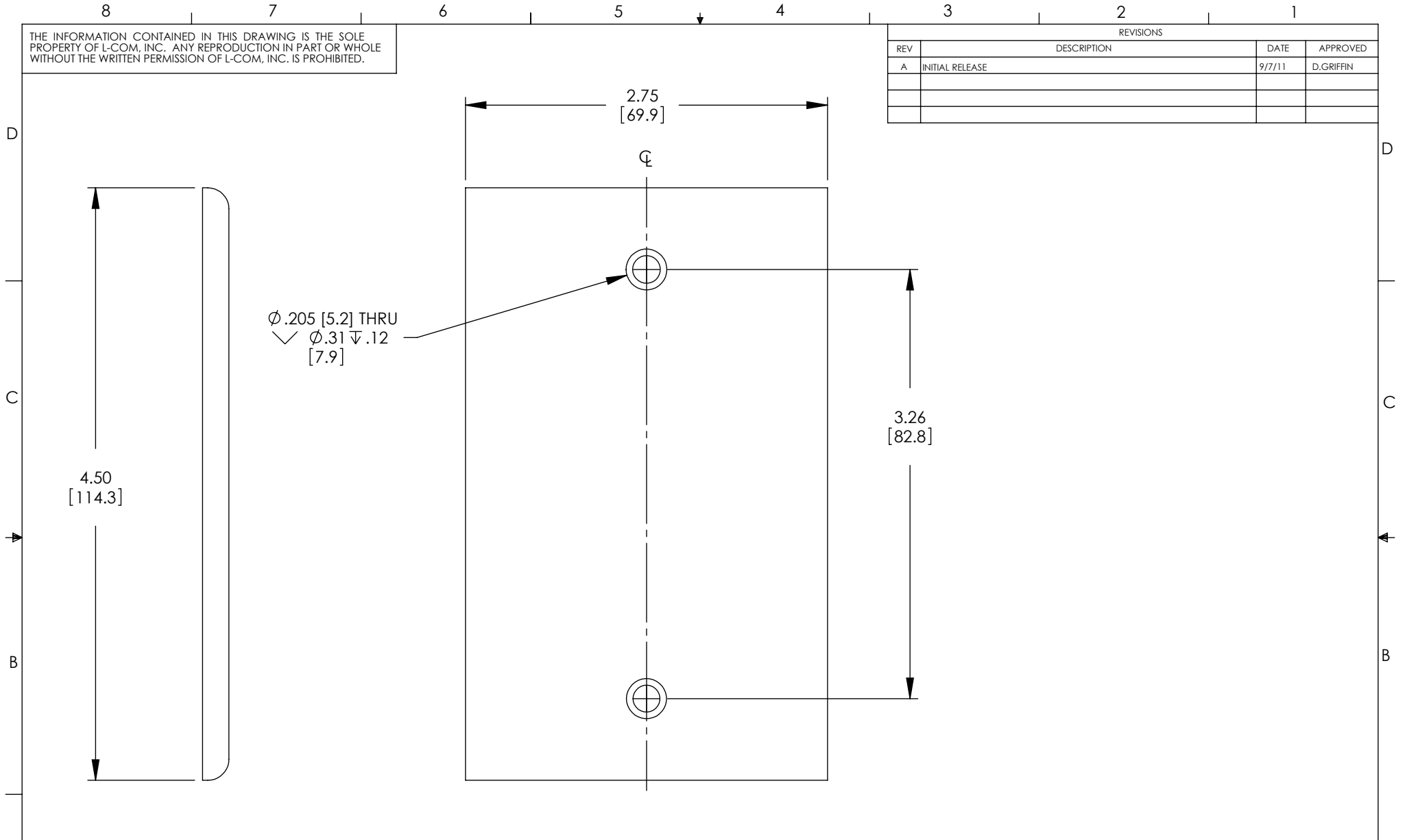


THE INFORMATION CONTAINED IN THIS DRAWING IS THE SOLE PROPERTY OF L-COM, INC. ANY REPRODUCTION IN PART OR WHOLE WITHOUT THE WRITTEN PERMISSION OF L-COM, INC. IS PROHIBITED.

REVISIONS			
REV	DESCRIPTION	DATE	APPROVED
A	INITIAL RELEASE	9/7/11	D.GRIFFIN



- NOTES:**
1. MATERIAL: STAINLESS STEEL.
 2. ALL DIMENSIONS ARE FOR REFERENCE ONLY.
 3. KIT INCLUDES (2) OVAL HEAD #6-32 SCREWS.
 4. WALL PLATE SHALL BE INDIVIDUALLY PACKAGED IN ACCORDANCE WITH L-COM SPEC. PS-0031.

UNLESS OTHERWISE SPECIFIED, DIMENSIONS ARE IN INCHES [mm] OVERALL CABLE LENGTH TOLERANCE: ≤12 [305] = +1 [25] / -0 >12 [305] ≤60 [1524] = +2 [51] / -0 >60 [1524] ≤120 [3048] = +4 [102] / -0 >120 [3048] ≤300 [7620] = +6 [152] / -0 >300 [7620] = +3% / -0% ALL OTHER DIMENSIONAL TOLERANCES: .X = ±.2 .XX = ±.02 .XXX = ±.005	APPROVALS DRAWN BY D. CASTRO CHECKED BY D. PARHAM APPROVED BY D. GALLAGHER	DATE 9/6/11 9/6/11 9/6/11	45 BEECHWOOD DRIVE NORTH ANDOVER, MA 01845
	CONFIGURATION DETAILS OF UNDIMENSIONED FEATURES MAY VARY		CATEGORY MODULAR
	COLOR VARIATIONS MAY OCCUR		PRODUCT DESCRIPTION WALL PLATE STAINLESS BLANK 1G
	PROJECTION 	SIZE A	FSCM NO. 43321
SCALE: NONE		CAD FILE: WPD100.SLDDRW	SHEET 1 OF 1