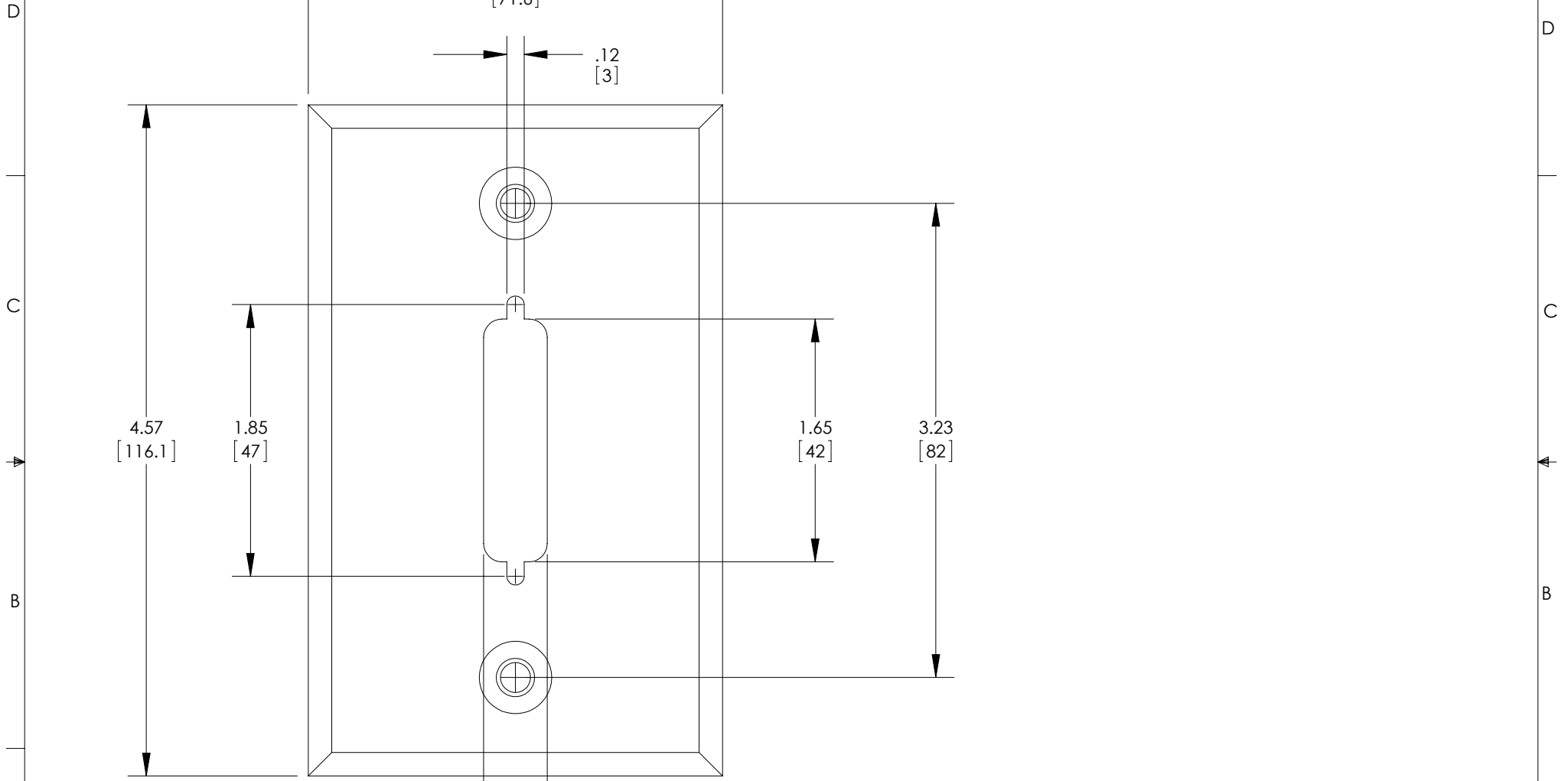


THE INFORMATION CONTAINED IN THIS DRAWING IS THE SOLE PROPERTY OF L-COM, INC. ANY REPRODUCTION IN PART OR WHOLE WITHOUT THE WRITTEN PERMISSION OF L-COM, INC. IS PROHIBITED.

REVISIONS			
REV	DESCRIPTION	DATE	APPROVED
A	DRAWING REPLACES WPD125-OD1 AT REV A	12/1/14	D. CASTRO
.	.	.	.
.	.	.	.
.	.	.	.



- NOTES:  
 1. MATERIAL: STAINLESS STEEL  
 2. COMPONENT SHALL BE INDIVIDUALLY PACKAGED IN ACCORDANCE WITH L-COM SPECIFICATION PS-0031.

**REGULATORY COMPLIANCE:**  
 CE2011/65/EU (RoHS DIRECTIVE)

UNLESS OTHERWISE SPECIFIED, DIMENSIONS ARE IN INCHES [mm] OVERALL CABLE LENGTH TOLERANCE: ≤12 [305] = +1 [25] / -0 >12 [305] ≤60 [1524] = +2 [51] / -0 >60 [1524] ≤120 [3048] = +4 [102] / -0 >120 [3048] ≤300 [7620] = +6 [152] / -0 >300 [7620] = +5% / -0% ALL OTHER DIMENSIONAL TOLERANCES: .X = ± .2 [5.08] .XX = ± .02 [51] .XXX = ± .005 [1.3]	APPROVALS DRAWN BY RON CARRICK	DATE 6/5/2002	45 BEECHWOOD DRIVE NORTH ANDOVER, MA 01845		
	CHECKED BY DOUG PARHAM APPROVED BY C. MCCORMICK	DATE 6/5/2002 6/5/2002		CATEGORY D-SUBMINIATURE	
PROJECTION 	CONFIGURATION DETAILS OF UNDIMENSIONED FEATURES MAY VARY	PRODUCT DESCRIPTION WALL PLT SS DB25 D-SUB	SCALE: NONE CAD FILE: WPD125.SLDDRW SHEET 1 OF 1		
	COLOR VARIATIONS MAY OCCUR	SIZE <b>A</b>	FSCM NO. <b>43321</b>	DWG. NO. WPD125	REV. <b>A</b>