

Low Loss SMA Male to N Female Bulkhead Cable Assembly using LMR-240-DB Coax, 1.5 FT with Times Microwave Components



**LCCA30273-FT1.5**

**Configuration**

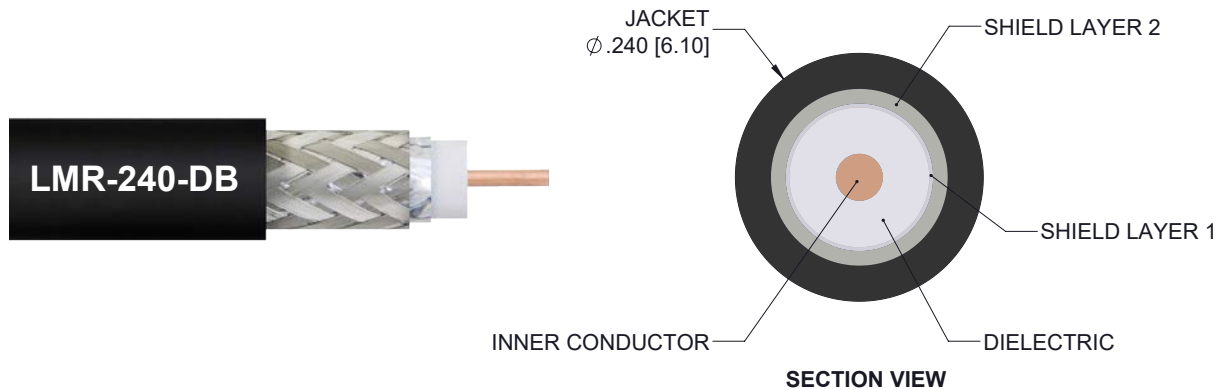
- Connector 1: SMA Male
- Connector 2: N Female Bulkhead
- Cable Type: LMR-240-DB

**Features**

- Using Times Microwave Components
- Max Frequency 5.8 GHz
- Shielding Effectivity > 90 dB
- 84% Phase Velocity
- PE Jacket
- Low Insertion Loss
- Bend Radius of 2.5 Inches

**Applications**

- General Purpose
- Laboratory Use
- Antenna Installations
- Land Mobile Radio & Other Communication Systems
- Cellular & Wi-Fi Systems



**Description**

L-com's LCCA30273-FT1.5 is a low loss SMA male to N female bulkhead cable assembly using LMR-240-DB coax, 1.5 FT with Times Microwave components and ships same-day. The LMR-240-DB coax of this SMA cable uses the PE (F) dielectric with a VoP of 84%, resulting in very low insertion loss compared to solid dielectrics. These flexible RF cable assemblies are ideal for applications where flexure is required. Our L-com SMA to N cable assembly has a male to female gender configuration with flexible LMR-240-DB series coax and operates to 5.8 GHz. The double shield of this SMA cable is layered by tinned copper braid over aluminum tape providing shielding effectiveness greater than 90dB. L-com's RF cable assembly with N bulkhead interface enables system designers to have external connections on their product enclosures or to be used for other rack mount and panel mount applications. \*LMR™ is a trademark of Times Microwave Systems.

Custom versions of this SMA male to SMA female cable, along with the rest of L-com's other RF assemblies, can also be built and shipped same day. Other available RF cable assembly value added services from L-com include connector orientation or clocking, heat shrink booting and custom labeling. RF testing can also be performed to document the electrical performance of your cable assembly. Contact a sales representative for testing or custom RF cable quotes. Part number LCCA30273-FT1.5 L-com Low Loss SMA Male to N Female Bulkhead Cable Assembly using LMR-240-DB Coax, 1.5 FT with Times Microwave Components data sheet PDF includes details of the RF product specifications, CAD drawing(s) and dimensions below.

Low Loss SMA Male to N Female Bulkhead Cable Assembly using LMR-240-DB Coax, 1.5 FT with Times Microwave Components



## LCCA30273-FT1.5

### Electrical Specifications

| Description                   | Minimum | Typical      | Maximum | Units                 |
|-------------------------------|---------|--------------|---------|-----------------------|
| Frequency Range               | DC      |              | 5.8     | GHz                   |
| Velocity of Propagation       |         | 84           |         | %                     |
| RF Shielding                  | 90      |              |         | dB                    |
| Group Delay                   |         | 1.21 [3.97]  |         | ns/ft [ns/m]          |
| Capacitance                   |         | 24.2 [79.4]  |         | pF/ft [pF/m]          |
| Inductance                    |         | 0.06 [0.2]   |         | uH/ft [uH/m]          |
| DC Resistance Inner Conductor |         | 3.2 [10.5]   |         | Ohms/1000ft [Ohms/Km] |
| DC Resistance Outer Conductor |         | 3.89 [12.76] |         | Ohms/1000ft [Ohms/Km] |
| Jacket Spark                  |         |              | 5,000   | Vrms                  |

### Specifications by Frequency

| Description           | F1   | F2   | F3   | F4   | F5  | Units |
|-----------------------|------|------|------|------|-----|-------|
| Frequency             | 0.25 | 0.5  | 1    | 2.5  | 5.8 | GHz   |
| Insertion Loss (Typ.) | 0.25 | 0.28 | 0.31 | 0.39 | 0.5 | dB    |

#### Electrical Specification Notes:

The Insertion Loss data above is based on the performance specifications of the coax cable and connectors used in this assembly. The Insertion Loss includes an estimated insertion loss of 0.1 dB per connector.

### Mechanical Specifications

#### Cable Assembly

|          |                     |
|----------|---------------------|
| Length   | 18 in [457.2 mm]    |
| Diameter | 0.81 in [20.57 mm]  |
| Weight   | 0.096 lbs [43.54 g] |

#### Cable

|                                      |                     |
|--------------------------------------|---------------------|
| Cable Type                           | LMR-240-DB          |
| Impedance                            | 50 Ohms             |
| Inner Conductor Type                 | Solid               |
| Inner Conductor Material and Plating | Copper              |
| Dielectric Type                      | PE (F)              |
| Number of Shields                    | 2                   |
| Shield Layer 1                       | Aluminum Tape       |
| Shield Layer 2                       | Tinned Copper Braid |

Low Loss SMA Male to N Female Bulkhead Cable Assembly using LMR-240-DB Coax, 1.5 FT with Times Microwave Components



## LCCA30273-FT1.5

|                              |                        |
|------------------------------|------------------------|
| Jacket Material              | PE, Black              |
| Jacket Diameter              | 0.24 in [6.1 mm]       |
| One Time Minimum Bend Radius | 0.75 in [19.05 mm]     |
| Repeated Minimum Bend Radius | 2.5 in [63.5 mm]       |
| Bending Moment               | 0.25 lbs-ft [0.34 N-m] |
| Flat Plate Crush             | 20 lbs/in [0.36 Kg/mm] |
| Tensile Strength             | 80 lbs [36.29 Kg]      |

### Connectors

| Description                          | Connector 1                | Connector 2            |
|--------------------------------------|----------------------------|------------------------|
| Type                                 | SMA Male                   | N Female Bulkhead      |
| Specification                        | MIL-STD-348                | MIL-STD-348            |
| Impedance                            | 50 Ohms                    | 50 Ohms                |
| Contact Material and Plating         | Beryllium Copper, Gold     | Beryllium Copper, Gold |
| Contact Plating Specification        | ASTM B488                  |                        |
| Dielectric Type                      | Teflon                     | PTFE                   |
| Outer Conductor Material and Plating |                            | Brass, Tri-Metal       |
| Body Material and Plating            | Passivated Stainless Steel | Brass, Tri-Metal       |
| Body Plating Specification           | SAE-AMS-2700               |                        |
| Coupling Nut Material and Plating    | Passivated Stainless Steel |                        |
| Coupling Nut Plating Specification   | SAE-AMS-2700               |                        |

### Environmental Specifications

#### Temperature

|                 |                  |
|-----------------|------------------|
| Operating Range | -40 to +85 deg C |
| Storage Range   | -70 to +85 deg C |

**Compliance Certifications** (see [product page](#) for current document)

### Plotted and Other Data

Notes:

Low Loss SMA Male to N Female Bulkhead Cable Assembly using LMR-240-DB Coax, 1.5 FT with Times Microwave Components



## LCCA30273-FT1.5

### How to Order

Part Number Configuration:

**LCCA30273 - xx uu**



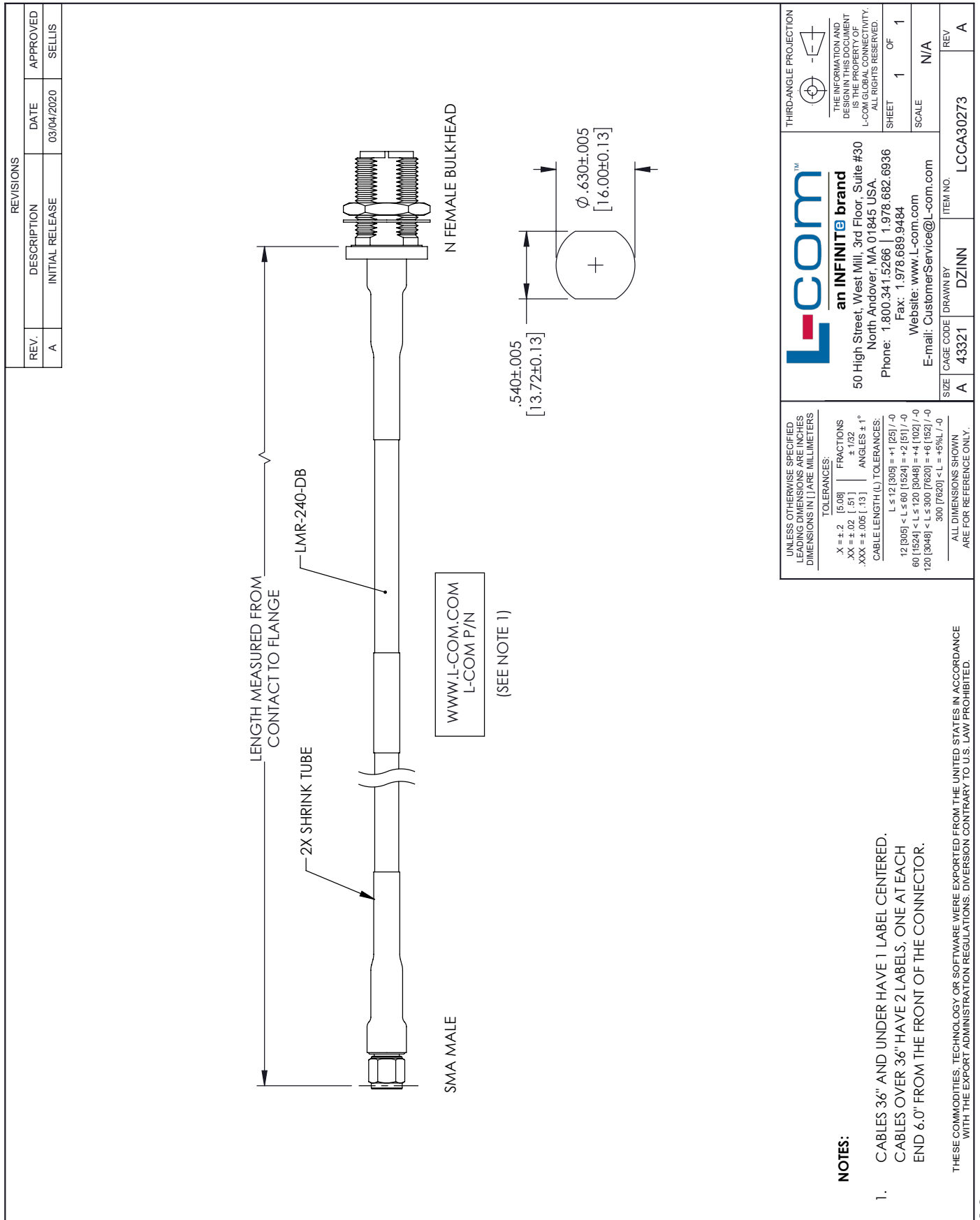
Example: LCCA30273-12 = 12 inches long cable  
LCCA30273-100cm = 100 cm long cable

Low Loss SMA Male to N Female Bulkhead Cable Assembly using LMR-240-DB Coax, 1.5 FT with Times Microwave Components from L-com has same day shipment for domestic and International orders. L-com is a leading manufacturer of wired and wireless connectivity products and committed to in-stock availability and same day shipping. Our portfolio includes coaxial cable assemblies, connectors, adapters and custom products as well as lightning and surge protectors, NEMA rated enclosures, and an RF product line which includes antennas, amplifiers, passive, and active components.

The information contained within this document is accurate to the best of our knowledge and representative of the part described herein. It may be necessary to make modifications to the part and/or the documentation of the part in order to impliment improvements. L-com reserves the right to make such changes as required. Unless otherwise stated, all specifications are nominal. L-com does not make any representation or warranty regarding the suitability of the part described herein for any particular purpose, and L-com does not assume liability arising out of the use of any part or document.ontained within this document is accurate to the best of our knowledge and representative of the part described herein. It may be necessary to make modifications to the part and/or the documentation of the part in order to impliment improvements. L-com reserves the right to make such changes as required. Unless otherwise stated, all specifications are nominal. L-com does not make any representation or warranty regarding the suitability of the part described herein for any particular purpose, and L-com does not assume liability arising out of the use of any part or document.

Low Loss SMA Male to N Female Bulkhead Cable Assembly using LMR-240-DB Coax, 1.5 FT with Times Microwave Components

L-com CAD Drawing



UNLESS OTHERWISE SPECIFIED LEADING DIMENSIONS ARE INCHES DIMENSIONS IN [ ] ARE MILLIMETERS

**TOLERANCES:**

|               |        |           |        |
|---------------|--------|-----------|--------|
| .X = ± .2     | [5.08] | FRACTIONS | ± 1/32 |
| .XX = ± .02   | [.51]  | ANGLES    | ± 1°   |
| .XXX = ± .005 | [.13]  |           |        |

**CABLE LENGTH (L) TOLERANCES:**

|                             |                |
|-----------------------------|----------------|
| L ≤ 12 [305]                | ± 1 [25] / -0  |
| 12 [305] < L ≤ 60 [1524]    | ± 2 [51] / -0  |
| 60 [1524] < L ≤ 120 [3048]  | ± 4 [102] / -0 |
| 120 [3048] < L ≤ 300 [7620] | ± 6 [152] / -0 |
| 300 [7620] < L              | ± 9% [L] / -0  |

ALL DIMENSIONS SHOWN ARE FOR REFERENCE ONLY.

**L-com™**  
an INFINITE brand

50 High Street, West Mill, 3rd Floor, Suite #30  
North Andover, MA 01845 USA.  
Phone: 1.800.341.5266 | 1.978.682.6936  
Fax: 1.978.689.9484  
Website: www.l-com.com  
E-mail: CustomerService@l-com.com

ITEM NO. LCCA30273

SIZE A CAGE CODE DZINN

REV A

SCALE N/A

SHEET 1 OF 1

- NOTES:**
- CABLES 36" AND UNDER HAVE 1 LABEL CENTERED. CABLES OVER 36" HAVE 2 LABELS, ONE AT EACH END 6.0" FROM THE FRONT OF THE CONNECTOR.

THESE COMMODITIES, TECHNOLOGY OR SOFTWARE WERE EXPORTED FROM THE UNITED STATES IN ACCORDANCE WITH THE EXPORT ADMINISTRATION REGULATIONS. DIVERSION CONTRARY TO U.S. LAW PROHIBITED.

T-Rev D