



an INFINIT® brand



Electrical Cabinet SMALL CELL BREAKER Single-phase 120 Vac 4x 15A Branches UL 489

Cabinets Technical Data Sheet

4QTY15ABRK-KIT

Features

- Breakers for LC-MM08-5512 and LC-2MMX8-4472 electrical cabinets

Applications

- Small Cells
- 5G Sites
- DAS Systems
- Electrical Main Panels
- Electrical Sub-Panels
- Load Expansion

Electrical Specifications

Description	Minimum	Typical	Maximum	Units
Service Voltage		120		Vac
Maximum Continuous Operating Voltage (MCOV)				
L - N Service Current Rating			276 15	Vac A
Branch Breaker Rating		4x 15A		A
Breaker Type		DIN-Rail		

Mechanical Specifications

- Weight 2 lbs [907.18 g]
- Temperature (Operating Range) to REGEX:\bdeg C\b

Compliance Certifications

- UL Listed UL 489

Our portfolio includes cable assemblies, connectors, adapters and custom products, as well as their wireless product line which includes antennas, RF amplifiers, coaxial lightning and surge protectors, and NEMA rated enclosures.

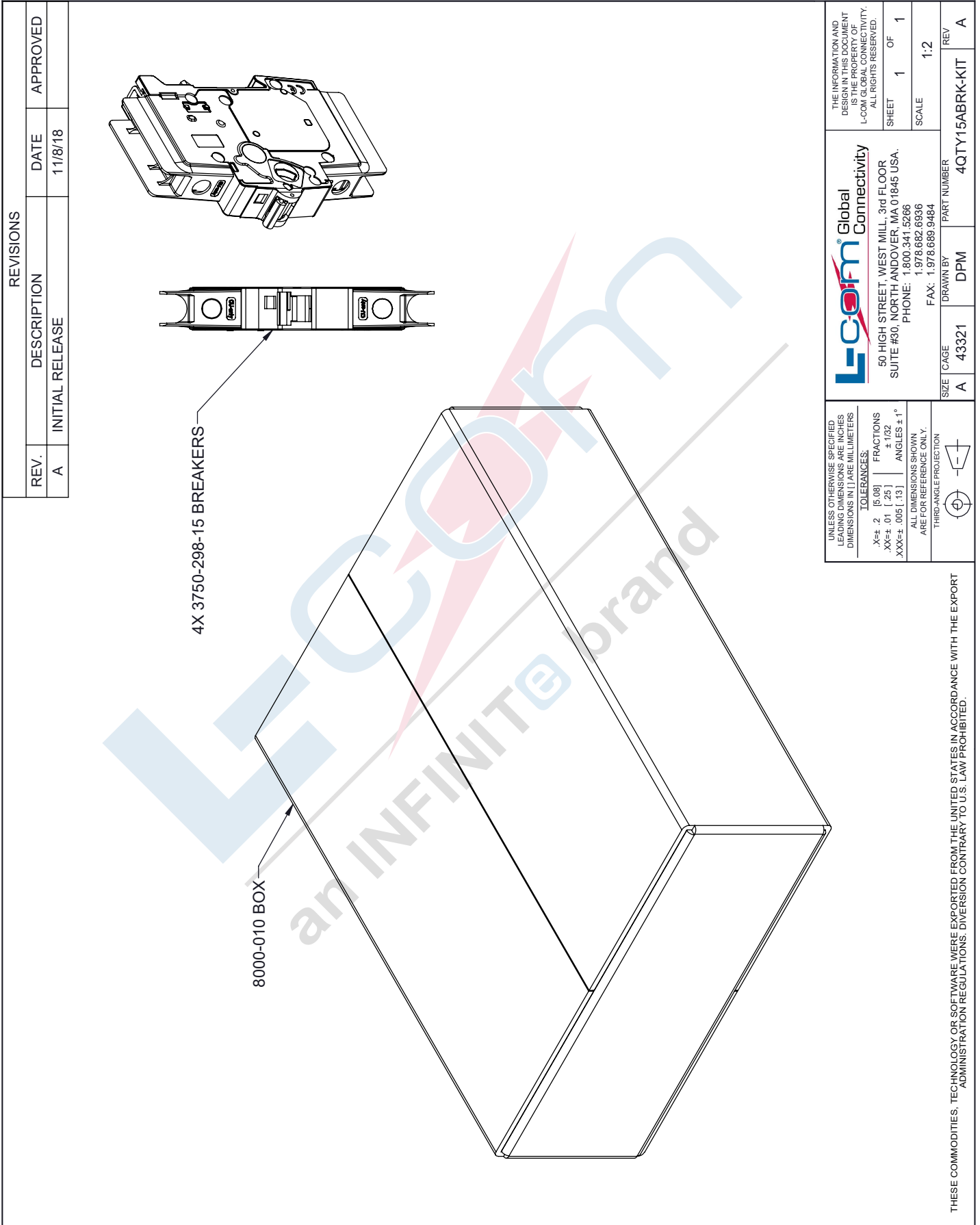
Click the following link (or enter part number in "SEARCH" on website) to obtain additional part information including price, inventory and certifications: [Electrical Cabinet SMALL CELL BREAKER Single-phase 120 Vac 4x 15A Branches UL 489 4QTY15ABRK-KIT](https://www.l-com.com/Electrical Cabinet SMALL CELL BREAKER Single-phase 120 Vac 4x 15A Branches UL 489 4QTY15ABRK-KIT)

URL: <https://www.l-com.com/Electrical Cabinet SMALL CELL BREAKER Single-phase 120 Vac 4x 15A Branches UL 489-p.aspx>

The information contained in this document is accurate to the best of our knowledge and representative of the part described herein. It may be necessary to make modifications to the part and/or the documentation of the part, in order to implement improvements. L-com reserves the right to make such changes as required. Unless otherwise stated, all specifications are nominal. L-com does not make any representation or warranty regarding the suitability of the part described herein for any particular purpose, and L-com does not assume any liability arising out of the use of any part or documentation.

4QTY15ABRK-KIT CAD Drawing

Electrical Cabinet SMALL CELL BREAKER Single-phase 120 Vac 4x 15A Branches UL 489



REVISIONS		
REV.	DESCRIPTION	DATE
A	INITIAL RELEASE	11/8/18

<p>UNLESS OTHERWISE SPECIFIED LENGTH DIMENSIONS ARE IN INCHES DIMENSIONS IN PARENTHESES ARE IN MILLIMETERS</p> <p>TOLERANCES: .X±.2 [5.08] FRACTIONS ± 1/32 .XX±.01 [.25] ANGLES ± 1° .XXX±.005 [.13]</p> <p>ALL DIMENSIONS SHOWN ARE FOR REFERENCE ONLY.</p> <p>THIRD-ANGLE PROJECTION</p>	<p>L-com Global Connectivity</p> <p>50 HIGH STREET, WEST MILL, 3rd FLOOR SUITE #30, NORTH ANDOVER, MA 01845 USA. PHONE: 1.800.341.5266 FAX: 1.978.682.6936 FAX: 1.978.689.9484</p>	<p>THE INFORMATION AND DESIGN IN THIS DOCUMENT IS THE PROPERTY OF L-COM GLOBAL CONNECTIVITY. ALL RIGHTS RESERVED.</p> <p>SHEET 1 OF 1</p> <p>SCALE 1:2</p>
	<p>SIZE CAGE DRAWN BY PART NUMBER</p> <p>A 43321 DPM 4QTY15ABRK-KIT</p>	<p>REV</p> <p>A</p>

THESE COMMODITIES, TECHNOLOGY OR SOFTWARE WERE EXPORTED FROM THE UNITED STATES IN ACCORDANCE WITH THE EXPORT ADMINISTRATION REGULATIONS. DIVERSION CONTRARY TO U.S. LAW PROHIBITED.