



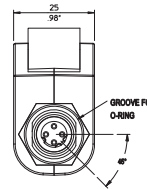
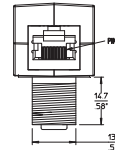
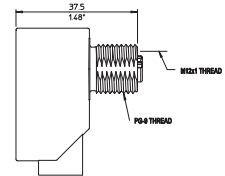
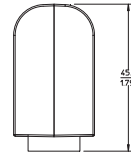
## Industrial Ethernet Panel-Mount Adaptors for PROFINET or Ethernet/IP Applications

0981 ENC 100



### M12 / RJ45 (panel-mount adaptor)

RJ45/M12 adaptor, female receptacle connector M12, D coding, chassis side thread PG 9, RJ45 female connector, 90 degree.



- 1 = TD+
- 2 = RD+
- 3 = TD-
- 4 = RD
- 5 = RX+
- 6 = TX+
- 7 = n.c.
- 8 = RXhousing shield

### Pin Assignment

#### M12 Socket



- 1 = TD+
- 2 = RD+
- 3 = TD-
- 4 = RD-
- 5 = shield

#### RJ45 Socket



- 1 = TD+
- 2 = TD-
- 3 = RD+
- 4 = n.c.
- 5 = n.c.
- 6 = RD-
- 7 = n.c.
- 8 = n.c.



## Industrial Ethernet Panel-Mount Adaptors for PROFINET or Ethernet/IP Applications 0981 ENC 100

### Technical Data

#### Environmental

Degree of protection IP 20 / IP 67  
Operating temperature range 0°C (32°F) to +70°C (+158°F)

#### Materials

Housing PA

**M12**  
Contacts CuZn, pre-nickel and gold-plated  
Housing CuZn, nickel-plated  
Insert PUR, selfextinguishing  
O-ring FKM

**RJ45**  
Contacts CuSn, pre-nickel and gold-plated  
Housing CuZn, tin-plated  
Insert PA GF

#### Electrical

Nominal current 1.5 A  
Nominal voltage max. 60 V

Part Number

0981 ENC 100



The application of these products in harsh environments should always be checked before use.  
Specifications subject to alteration.