

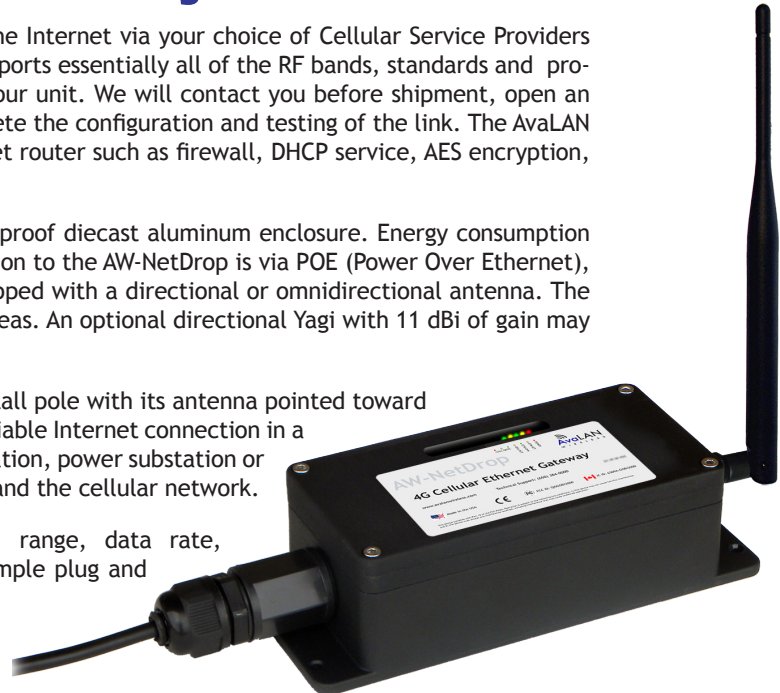
# 4G Cellular Ethernet Gateway

This product allows you to connect an Ethernet network to the Internet via your choice of Cellular Service Providers anywhere in the world. Qualcomm Gobi™ 3000 technology supports essentially all of the RF bands, standards and protocols in use today. We do the work for you of provisioning your unit. We will contact you before shipment, open an account with your chosen Cellular Service Provider and complete the configuration and testing of the link. The AvaLAN AW-NetDrop provides all of the normal functions of an Ethernet router such as firewall, DHCP service, AES encryption, tunneling and port routing.

The AvaLAN AW-NetDrop is packaged in a rugged and weatherproof diecast aluminum enclosure. Energy consumption is low enough to accommodate solar power. The power connection to the AW-NetDrop is via POE (Power Over Ethernet), allowing a single cable connection to the box. It may be equipped with a directional or omnidirectional antenna. The standard omnidirectional antenna works well in most signal areas. An optional directional Yagi with 11 dBi of gain may be used to improve reception in fringe locations.

The AW-NetDrop Gateway is at its best when mounted atop a tall pole with its antenna pointed toward the appropriate cell tower and able to provide a robust and reliable Internet connection in a remote fringe location. Connect your water tower, pumping station, power substation or cabin in the woods and browse to it securely via the Internet and the cellular network.

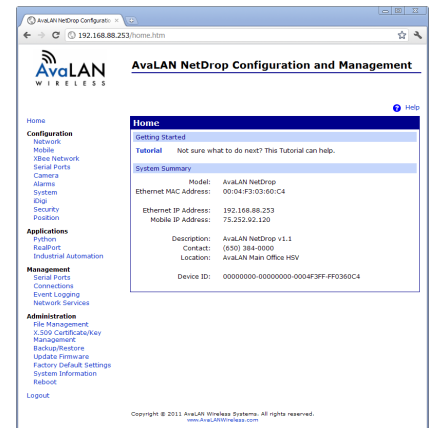
AvaLAN's products offer the ideal combination of price, range, data rate, security, interference avoidance, quality-of-service, and a simple plug and play set up with minimal user programming required.



## Specifications

CHARACTERISTIC	SPECIFICATION/DESCRIPTION
Cellular Carrier Certifications	AT&T, Verizon, Sprint, others pending
Technology/Bands	HSPA+/UMTS (800/850/900/1900/2100 MHz) EDGE/GPRS/GSM (850/900/1800/1900 MHz) EV-DO/CDMA (800/1900 MHz)
Data Rate (Downlink/Uplink)	HSPA+: 22 Mbps/6 Mbps, WCDMA: 384 kbps GSM: 14.14kbps, GPRS: 85.6 kbps/42.8 kbps, EDGE: 236.8 kbps/118.4 kbps EV-DO: 3.1 Mbps/1.8 Mbps, CDMA 1xRTT: 153 kbps
Power Class	HSPA+ /WCDMA: Class 3, GSM/GPRS 850/900 MHz: Class 4 GSM/GPRS 1800/1900 MHz: Class 1, EDGE: Class E2
Router Functionality	IPv4/IPv6, VPN (IPsec with IKE/ISAKMP, multiple tunnels, DES/3DES/AES encryption, VPN pass-through, GRE forwarding), SSL/SSH, SMS
Network Interface	RJ-45 Jack, 10/100 Base-T, 10/100 Mbps (auto-sensing), full-/half-duplex (auto-sensing)
RF Antenna	2 dBi flexible omnidirectional antenna included, 11 dBi directional Yagi optional
Power System	Power Over Ethernet, 18 VDC Injector included: 100-240 VAC 50/60Hz primary source
Power Consumption	<6 W (CDMA Transmit), <2W idle. Built-in switching regulator accommodates 12-48 VDC input.
Physical Package	Heavy die-cast Aluminum, black powder-coated finish, meets IP66 Standard for water and dust protection. Sealing gland for Ethernet cable entry. Window in cover to view status LEDs.
Size	200 x 80 x 58 mm not including connectors; 0.570 Kg
Operating Environment	-40°C to +70°C
Warranty	1 Year Parts & Labor, XTRa-Care Extended Warranty 2 Year Extension available at nominal cost

Screen Capture:  
Web Browser-based Configuration with built-in help and tutorials



### To Order:

<b>AW-NetDrop</b>
4G Cellular Ethernet Gateway
Includes: (1) 4G Cellular Ethernet Gateway (1) AW-POE18i Power Over Ethernet Injector with integrated power supply
Optional:
<b>AW11-4G</b>
Directional 11 dBi Yagi Antenna

© AvaLAN Wireless Systems Incorporated. All rights reserved. AvaLAN Wireless and the AvaLAN Wireless logo are registered trademarks of AvaLAN Wireless Systems Incorporated. All other trademarks are property of their respective owners. AvaLAN Wireless makes no representations or warranties with respect to the accuracy, utility, or completeness of the contents of this publication and reserves the right to make changes to specifications and product descriptions at any time without notice. No license, express or implied, by estoppel or otherwise, to any patents or other intellectual property rights is granted by this document. Particular uses or applications may invalidate some of the specifications and/or product descriptions contained herein. The customer is urged to perform its own engineering review before deciding on a particular application. AvaLAN Wireless products are not designed for use in medical, life saving, or life sustaining applications.