

2.4 GHz Indoor Wireless Ethernet Radio

This robust and reliable product allows you to build non-line-of-sight, point-to-point or point-to-multipoint wireless Ethernet links that connect “fringe” IP devices, including IP access control readers, remote printers, remote PCs, VoIP phones, point-of-sale devices, digital signage or industrial control devices.

The 2.4 GHz band is the most globally accepted unlicensed portion of the RF spectrum. AvaLAN’s unique solution offers 29 non-overlapping channels and maximum legal power to provide five times the range of Wi-Fi through walls or line-of-sight.

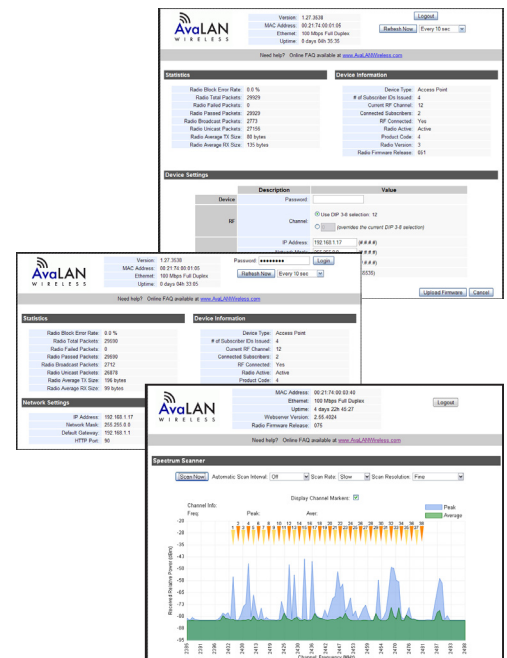
The radios include a built-in web browser interface for remote configuration, status monitoring and firmware update. This interface also provides a spectrum analyzer to help diagnose interference issues. Encryption keys are set through a completely different physical interface (USB) and cannot be seen or changed over the Ethernet data path. A small LCD panel on the front of the unit can also verify proper operation at a glance. The radio’s case is rugged extruded aluminum and is designed to meet C1D2 standards for hazardous environments (certification pending). A DIN Rail mounting clip is provided on the case back to facilitate installation in industrial equipment cabinets.



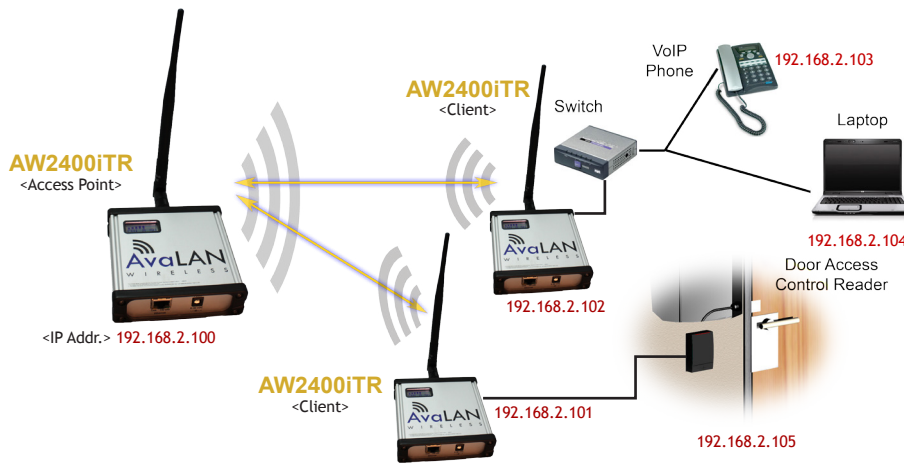
Features

- 1.5 Mbps Data Rate
- Five times greater range than Wi-Fi, through walls or line-of-sight
 - Indoor range, up to 10 building walls
 - Up to 30 mile range to connect to difficult locations
- 128 bit AES encryption, FIPS 197 - NIST Certified
- One Watt power consumption
- Built-in spectrum analyzer
- Radio can be configured as an access point or client
 - Install up to 16 clients per access point
 - 29 Non-overlapping channels
- Does not require an FCC license to operate or install

Screen Captures:
Web Browser-based
Management Tools



Application Example



- Radios are IP addressable*, with Remote Configuration & Diagnostic Tools
- Radios Support Multiple IP Addresses at Each Remote Node**

* There is a limit of 128 routable MAC addresses per access point. This allows an Ethernet switch to be attached to subscriber units ("Client" in image at left), but limits to 128 the total number of Ethernet devices to which the access point can connect.

** There is a limit of 16 active subscriber units for each access point. A total of 29 access points (in the 2.4 GHz band) can be deployed to support up to 464 fixed subscriber units across a given site.

Technical specifications

PARAMETER	SPECIFICATION
RF transmission rate	1.536 Mbps
Ethernet throughput	935 Kbps
Output power	+21 dBm
Receiver Sensitivity	-97 dBm at 10 ⁻⁴ BER
Range	40 miles line-of-sight with 19 dBi antenna
RF channels	29 non-overlapping channels with 2.0833 MHz spacing
Frequency selection	Automatic or manually selectable via web browser interface
RF Connector	RPTNC Female
Ethernet	RJ-45
Power Connector	P5 2.1 mm
Mounting	DIN rail clip
Power regulation	Built-in switching regulator
Browser management tools	Statistics, Network Settings, Spectrum Analyzer, Firmware Upgrade
Power consumption	Transmit: 1.7 Watts Receive: 0.8 Watts
Voltage	9 to 30 VDC
Transmit current draw	140 mA at 12 VDC
Temperature range	-40° C to +70° C
Size	110 x 110 x 35 mm
Compatibility	Compatable with AW2400xTR and AW2400xTP radios

Ordering Information

AW2400iTR	AW2400iTR-PAIR
2.4 GHz Indoor Wireless Ethernet Radio	2.4 GHz Indoor Wireless Ethernet Bridge
Contents: <ul style="list-style-type: none"> • (1) AW2400iTR Radio • (1) AW2-2400 2.5 dBi Omnidirectional Antenna • (1) AW-POE Power Over Ethernet Injector • (1) 110 VAC to 12 VDC power adapter 	Contents: <ul style="list-style-type: none"> • (2) AW2400iTR Radios • (2) AW2-2400 2.5 dBi Omnidirectional Antennas • (2) AW-POE Power Over Ethernet Injectors • (2) 110 VAC to 12 VDC power adapters

Copyright AvaLAN Wireless Systems Incorporated. All rights reserved. AvaLAN Wireless and the AvaLAN Wireless logo are registered trademarks of AvaLAN Wireless Systems Incorporated. All other trademarks are property of their respective owners. AvaLAN Wireless makes no representations or warranties with respect to the accuracy, utility, or completeness of the contents of this publication and reserves the right to make changes to specifications and product descriptions at any time without notice. No license, express or implied, by estoppel or otherwise, to any patents or other intellectual property rights is granted by this document. Particular uses or applications may invalidate some of the specifications and/or product descriptions contained herein. The customer is urged to perform its own engineering review before deciding on a particular application. AvaLAN Wireless products are not designed for use in medical, life saving, or life sustaining applications.

06.25.2013