



High density fully featured USB and Video control

## ADDERView CATxIP 5000

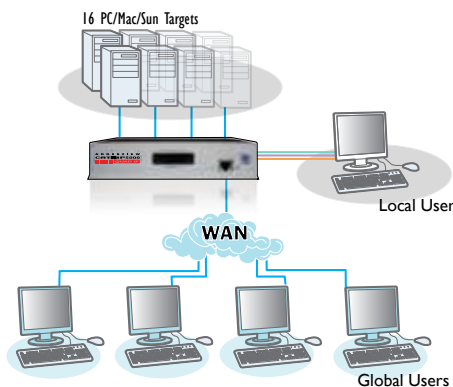
High density fully featured USB and Video control for local, remote and global users



### PRODUCT IN BRIEF

The ADDERView AVX5016 IP is the culmination of Adder's KVM over IP expertise to date. This new device offers 4 non blocking simultaneous IP connections together with a local port (5 separate users), and allows the user to control 16 separate devices. The AVX5016 IP is very small and compact enabling you to fit two units side by side to support 32 computers and 10 sessions in just 1U of rack space.

Using Adder's CAM modules, you can connect the switch via CAT5e cable to any type of server including PC, Mac and Sun. Country code reporting, DDC and continuous keyboard and mouse emulation further ensure faultless operation across your unique installation.



### FEATURES

#### 4 simultaneous IP users

Allows 4 simultaneous global users to connect via IP to any of the 16 connected devices.

#### Faultless video quality

Direct connection for 1 local user to connect straight into the switch.

#### LDAP integration

Authenticate users against your existing LDAP infrastructure. This feature can be enabled and disabled.

#### RS232 control

Integrated RS232 gives you the ability to control other external devices such as power management devices.

#### Ecopulse circuitry

Ecopulse powers down unnecessary circuits when not required to reduce power requirements. Over the life of the product this will save significant power resources.

#### Encryption and Authentication

This enterprise grade KVM over IP switch employs AES128 bit encryption and RSA2048 authentication ensuring your control system remains secure at all times.

#### Configuration

The AVX5016 IP allows you to configure 16 separate users internally with unique access privileges all of which are stored within the switch.

#### Open Architecture

Adder's continuous improvement policy further ensures your system against future hardware changes - Adder offers free firmware updates for the life of the product. Furthermore, Adder's open architecture design philosophy will not tie you in to specific manufacturer's equipment.

#### ADDER.net

Network management software, automating the task of managing your network control hardware.

#### Intelligent video thresholding

Adder's innovative active de-artifacting technology automatically calculates the ideal threshold for any computer or KVM switch so that video displays are refreshed with optimum immediacy - while "screen junk" is kept to an absolute minimum.

#### Flexible screen scaling

Adder solutions provide point-and-click screen scaling, so that users can quickly accommodate target devices running any size display with any aspect ratio. Adder solutions also allow users to easily override scaling if and when they require unscaled pixel-to-pixel mapping.

# ADDERView CATxIP 5000

High density fully featured USB and Video control for local, remote and global users

## ABOUT ADDER

Adder is a leading developer and thought leader in connectivity solutions. Adder's advanced range of KVM switches, extenders and IP solutions enable the control of local, remote and global IT systems across the enterprise. The company distributes its products in more than 60 countries through a network of distributors, resellers and OEMs. Adder has offices in the United States, United Kingdom, Germany, the Netherlands, Sweden, China and Singapore.

To find out more, visit:  
<http://www.adder.com>

## TECHNICAL SPECIFICATIONS

### Video Modes

Support for standard PC, Sun and Mac video modes up to a resolution of 1600 x 1200 @ 60Hz. DDC emulation supported via connected Computer Access Modules (CAMs).

### Hardware compatibility

Video, mouse and keyboard for PC, Sun, Mac, RS/6000, Alpha and SGI computers using PS/2, USB or Sun flash upgradable Computer Access Modules (CAMs).

### OS compatibility

Operates with all currently known software and operating systems including all Windows versions, DOS, Linux, Unix, BSD, all Sun OS, all Mac OS and NetWare.

### Local console

Video: HDD15 socket  
Keyboard/Mouse: USB type A sockets

### Connections

Local console connections as stated above. CATx computer connections: all RJ45 style. 10/100 auto-sensing Ethernet network port: RJ45. Power connection: 2.5mm DC jack (5V DC, 2.5A). RS232 triggered power switching and syncing: DB9 plug

### Physical design

Compact 1U high metal case construction suited for rack mounting (rack mount kits available). Width: 198mm/7.92", Height: 44mm/1.76", Depth: 120mm/4.8". Weight: 0.77kg/1.70lbs.

### Power supply

Mains adaptor with IEC style power lead (included).  
Input: 100-240VAC 0.5A 50-60Hz  
Output: 5VDC 2.5A

### Operating temperature

0°C to 40°C / 32°F to 104°F

## ORDERING INFORMATION

CATxIP 5000 16 port version: **AVX5016IP-XX**  
CATxIP 5000 16 port version KVM Switch Kit includes 8 USB CAM's and Rack Mount Kit: **AVX5016IPC-XX**

XX = Mains Lead Country Code:  
UK = United Kingdom  
US = United States  
EURO = Europe  
AUS = Australia

## ADDITIONAL ACCESSORIES

Single Rack Kit: **RMK4S**  
Dual Rack Kit: **RMK4D**

CAM: Computer Access Modules:  
CATX-PS2 (PS/2 only)  
CATX-USB (USB only)  
CATX-SUNA (Sun plus audio)



Example CAM: CATX-USB

## RELATED PRODUCTS

Adder offer a vast range of products to suit your needs. Other products you may be interested in include:

**ADDERView CATxIP 1000**  
AVX1008IP; AVX1016IP



**ADDERView CATxIP**  
AVX4016; AVX4016IP;  
AVX4024; AVX4024IP



**ADDERLink IP**  
ALIP



**ADDERLink IP GOLD**  
ALIP-GOLD



**ADDERLink IPEPS**  
AL-IPEPS; AL-IPEPS-DA



## Approvals

CE, FCC

## Rackmount Options

Single Unit Rack Brackets: **RMK4S**  
Double Unit rack brackets: **RMK4D**



© Copyright 2011 Adder Technology Ltd. All brand names and trademarks are the property of their respective owners. LM-avx5016ip\_v2.indd