

Fiber Optic Sensor Cable - 2M, Diffuse reflection, M4, straight, R15



## FOACAMPD42

### Fiber Optic Sensor Cable

#### Features

- Durable stainless steel head
- Flexible jacket
- Standard 2.2mm diameter ferrules
- Stable performance

#### Applications

- Industrial automation
- Discrete manufacturing
- High volume production
- Automotive manufacturing
- Stamping and plastic injection molding
- Packaging
- Food and Beverage
- Warehouse automation

#### Description

The L-com FOACAMPD42 is a diffuse reflection type fiber optic sensor cable. A stainless steel head and flexible PVC jacket makes the cable well suited for demanding industrial environments. The 2.2mm fiber ends make them compatible with industry standard amplifier ports, making interchanging quick and easy. Used in conjunction with L-com fiber optic sensor amplifiers, the resulting optical sensor is well suited for use in manufacturing and other industrial applications where fast, accurate sensing is critical. The L-com FOACAMPD42 is part of the IoT portfolio of products available from L-com, in-stock and ready to ship. Contact our knowledgeable technical support and sales staff for more information on this, and other IoT products from L-com.

#### General Specifications

Design Type	Diffuse Reflection - Parallel Core
Cable Type	POF
Jacket Type	PVC Black
Nominal Sensing Distance	90 mm
Cable Length	2 m
Cable Head Orientation	Straight
Cable Head Size	M4
Cable Head Material	Stainless Steel
Bend Radius	15 mm
Compatible Products	Fiber Optic Sensor Amplifiers

#### Environmental Specifications

##### Temperature

Operating Range	-25 to +70 deg C
Storage Range	-30 to +85 deg C

#### Compliance Certifications (see for current document)

CE Compliance	Yes
RoHS Compliance	Yes

Click the following link (or enter part number in "SEARCH" on website) to obtain additional part information including price, inventory and certifications:  
[Fiber Optic Sensor Cable - 2M, Diffuse reflection, M4, straight, R15 FOACAMPD42](#)

Fiber Optic Sensor Cable - 2M, Diffuse reflection, M4, straight, R15



## FOACAMPD42

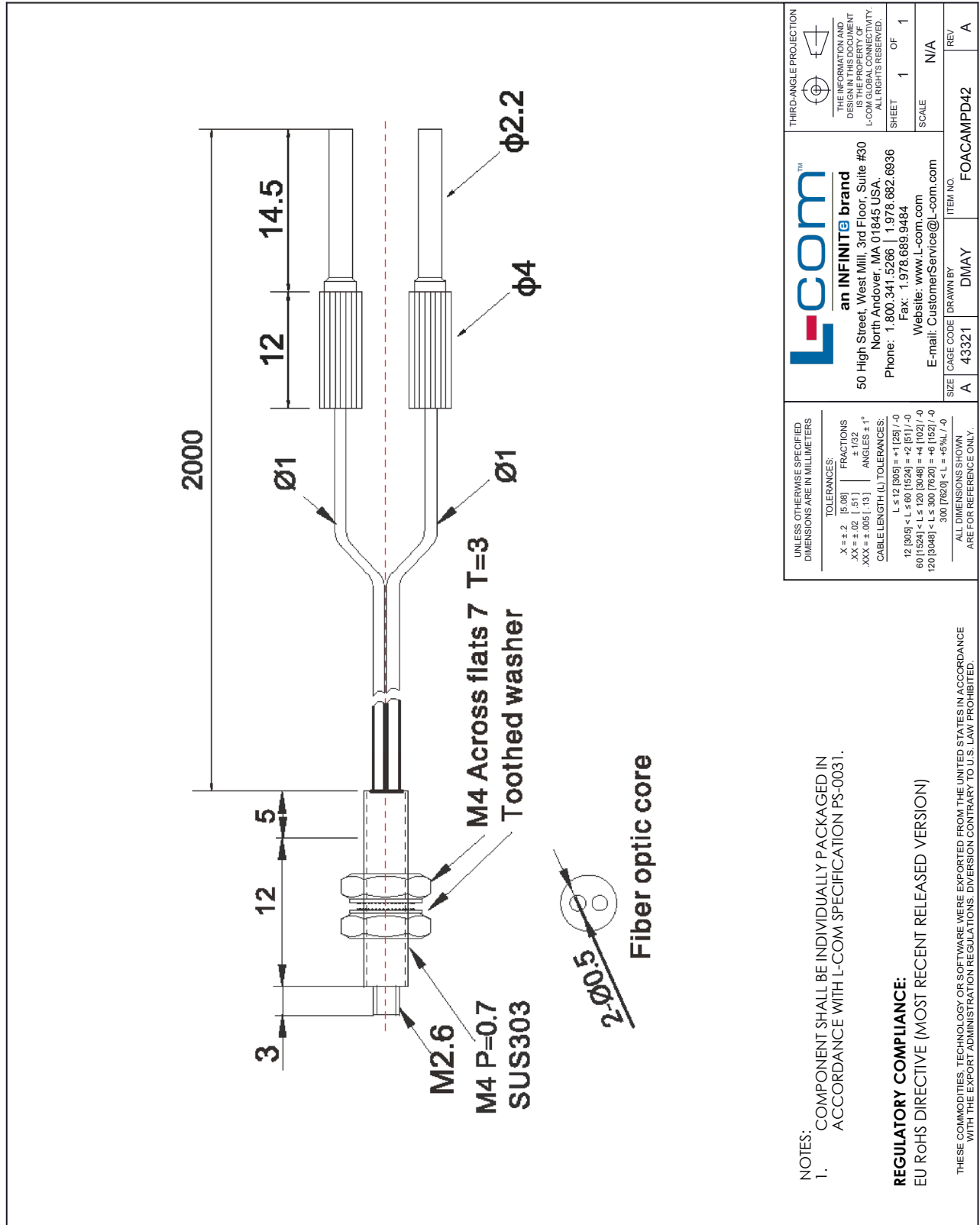
### Fiber Optic Sensor Cable

---

Fiber Optic Sensor Cable - 2M, Diffuse reflection, M4, straight, R15 from L-com has same day shipment for domestic and International orders. Our portfolio includes coaxial cable assemblies, connectors, adapters and custom products as well as lightning and surge protectors, NEMA rated enclosures, and an RF product line which includes antennas, amplifiers, passive, and active components.

The information contained within this document is accurate to the best of our knowledge and representative of the part described herein. It may be necessary to make modifications to the part and/or the documentation of the part in order to impliment improvements. L-com reserves the right to make such changes as required. Unless otherwise stated, all specifications are nominal. L-com does not make any representation or warranty regarding the suitability of the part described herein for any particular purpose, and L-com does not assume liability arising out of the use of any part or document.

L-com CAD Drawing



<p>UNLESS OTHERWISE SPECIFIED DIMENSIONS ARE IN MILLIMETERS</p> <p>TOLERANCES:</p> <p>.X ± .2 [ 5.08]      FRACTIONS ± 1/32</p> <p>.XX ± .02 [ .51]     ANGLES ± 1°</p> <p>.XXX ± .005 [ .13]</p> <p>CABLE LENGTH (L) TOLERANCES:</p> <p>L ≤ 12 [305] &lt; L ≤ 60 [1524] = +1 [25] / -0</p> <p>60 [1524] &lt; L ≤ 120 [3048] = +4 [102] / -0</p> <p>120 [3048] &lt; L ≤ 300 [7620] = +6 [152] / -0</p> <p>300 [7620] &lt; L = +5% / -0</p> <p>ALL DIMENSIONS SHOWN ARE FOR REFERENCE ONLY.</p>		<p>THIRD-ANGLE PROJECTION</p> <p>THE INFORMATION AND DIMENSIONS SHOWN ON THIS DRAWING IS THE PROPERTY OF L-COM GLOBAL CONNECTIVITY. ALL RIGHTS RESERVED.</p> <p>SHEET 1 OF 1</p> <p>SCALE N/A</p>	
<p><b>L-com</b> an INFINITE brand</p> <p>50 High Street, West Mill, 3rd Floor, Suite #30 North Andover, MA 01845 USA. Phone: 1.800.341.5266   1.978.682.6936 Fax: 1.978.689.9484 Website: www.L-com.com E-mail: CustomerService@L-com.com</p>		<p>ITEM NO. FOACAMPD42</p> <p>REV A</p>	
SIZE A	CAGE CODE 43321	DRAWN BY DMAY	SCALE N/A