

Fiber Optic Sensor Cable, 2M Side-view, Thru-beam, R25 POF,  
M3 Cylindrical Sensing End with 1.5mm Diameter Extension



## FOACAMPT32DQ

### Fiber Optic Sensor Cable

#### Features

- Durable stainless steel head
- Flexible jacket
- Standard 2.2mm diameter ferrules
- Stable performance

#### Applications

- Industrial automation
- Discrete manufacturing
- High volume production
- Automotive manufacturing
- Stamping and plastic injection molding
- Packaging
- Food and Beverage
- Warehouse automation

#### Description

L-com's FOACAMPT32DQ fiber optic sensor cable is a thru-beam type optical cable. This 2M (meter) fiber optic sensor cable is in stock and ready to ship on the same business day of the order. Our black thru-beam sensor cable has a durable stainless steel head, R25 bend radius, and flexible polyethylene jacket, which makes the cable well-suited for demanding industrial environments. The 2.2mm amplifier ends make this cable compatible with industry-standard amplifier ports, making interchanging quick and easy.

#### General Specifications

Type	Side-View
Design Type	Thru-beam
Cable Type	POF
Jacket Type	PE Black
Sensing Distance	180 to 1,100 mm
Cable Length	2 m
Cable Head Material	Stainless Steel
Bend Radius	25 mm
Compatible Products	Fiber Optic Sensor Amplifiers
Beam Exit	Side
Cable Head Shape	Cylindrical
Notes, Electrical/Optical	Minimum sensing distance with FOACAMPG1 amp, maximum sensing distance with FOACAMPC1 amp
Notes	Different amplifiers will impact sensing distance.

Click the following link (or enter part number in "SEARCH" on website) to obtain additional part information including price, inventory and certifications:  
[Fiber Optic Sensor Cable, 2M Side-view, Thru-beam, R25 POF, M3 Cylindrical Sensing End with 1.5mm Diameter Extension FOACAMPT32DQ](#)

Fiber Optic Sensor Cable, 2M Side-view, Thru-beam, R25 POF, M3 Cylindrical Sensing End with 1.5mm Diameter Extension



## FOACAMPT32DQ

### Fiber Optic Sensor Cable

#### Environmental Specifications

##### Temperature

Operating Range -20 to +50 deg C

Storage Range -30 to +85 deg C

##### Humidity

Operating Relative 35% to 85%

#### Compliance Certifications

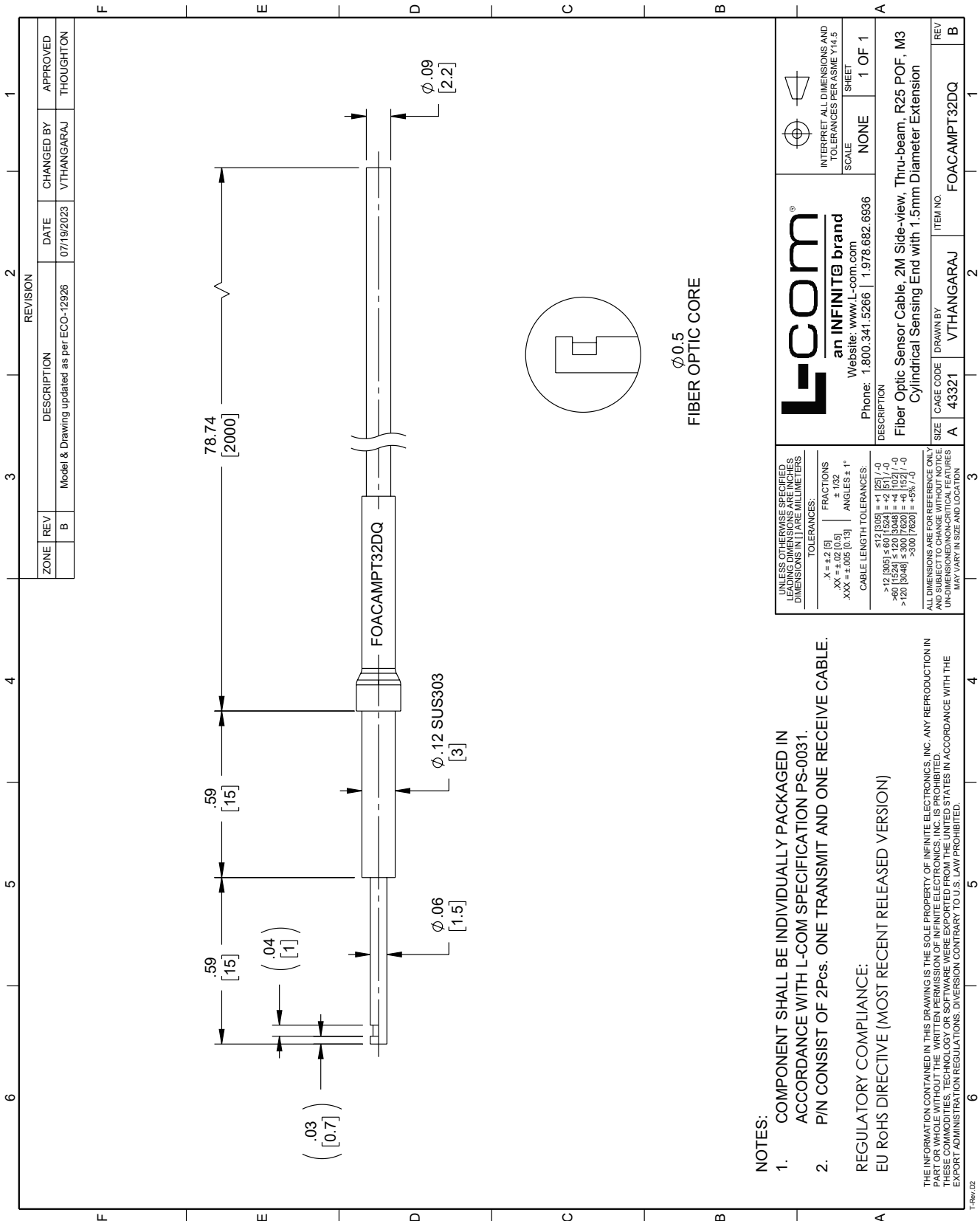
CE Compliance Yes

Fiber Optic Sensor Cable, 2M Side-view, Thru-beam, R25 POF, M3 Cylindrical Sensing End with 1.5mm Diameter Extension from L-com has same day shipment for domestic and International orders. Our portfolio includes coaxial cable assemblies, connectors, adapters and custom products as well as lightning and surge protectors, NEMA rated enclosures, and an RF product line which includes antennas, amplifiers, passive, and active components.

The information contained within this document is accurate to the best of our knowledge and representative of the part described herein. It may be necessary to make modifications to the part and/or the documentation of the part in order to impliment improvements. L-com reserves the right to make such changes as required. Unless otherwise stated, all specifications are nominal. L-com does not make any representation or warranty regarding the suitability of the part described herein for any particular purpose, and L-com does not assume liability arising out of the use of any part or document.

Fiber Optic Sensor Cable, 2M Side-view, Thru-beam, R25 POF, M3 Cylindrical Sensing End with 1.5mm Diameter Extension


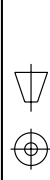
L-com CAD Drawing



NOTES:

1. COMPONENT SHALL BE INDIVIDUALLY PACKAGED IN ACCORDANCE WITH L-COM SPECIFICATION PS-0031.
  2. P/N CONSIST OF 2Pcs. ONE TRANSMIT AND ONE RECEIVE CABLE.
- REGULATORY COMPLIANCE:  
EU RoHS DIRECTIVE (MOST RECENT RELEASED VERSION)

THE INFORMATION CONTAINED IN THIS DRAWING IS THE SOLE PROPERTY OF INFINITE ELECTRONICS, INC. ANY REPRODUCTION IN PART OR WHOLE WITHOUT THE WRITTEN PERMISSION OF INFINITE ELECTRONICS, INC. IS PROHIBITED. THESE COMMODITIES, TECHNOLOGY OR SOFTWARE WERE EXPORTED FROM THE UNITED STATES IN ACCORDANCE WITH THE EXPORT ADMINISTRATION REGULATIONS. DIVERSION CONTRARY TO U.S. LAW PROHIBITED.

 <p><b>L-com</b> an INFINITE brand Website: www.L-com.com</p>		 <p>INTERPRET ALL DIMENSIONS AND TOLERANCES PER ASME Y14.5</p>
Phone: 1.800.341.5266   1.978.682.6936	SCALE: NONE	SHEET: 1 OF 1
DESCRIPTION: Fiber Optic Sensor Cable, 2M Side-view, Thru-beam, R25 POF, M3 Cylindrical Sensing End with 1.5mm Diameter Extension		
SIZE: A	CAGE CODE: 43321	ITEM NO.: FOACAMPT32DQ
DRAWN BY: VTHANGARAJ		REV: B

UNLESS OTHERWISE SPECIFIED, LEADING DIMENSIONS ARE IN MILLIMETERS. DIMENSIONS IN PARENTHESES ARE IN INCHES.

TOLERANCES:

X = ±.2 [5]	FRACTIONS ± 1/32
.XX = ±.02 [0.5]	ANGLES ± 1°
.XXX = ±.005 [0.13]	

CABLE LENGTH TOLERANCES:

< 12 [3048]	±.60 [1524]
> 12 [3048]	±.60 [1524]
< 300 [7620]	±.60 [1524]
> 300 [7620]	±.60 [1524]

ALL DIMENSIONS ARE FOR REFERENCE ONLY. DIMENSIONS ARE SUBJECT TO CHANGE WITHOUT NOTICE AND SUBJECT TO CHANGE WITHOUT NOTICE UNLESS OTHERWISE SPECIFIED. UNDIMENSIONED/NON-CRITICAL FEATURES MAY VARY IN SIZE AND LOCATION.